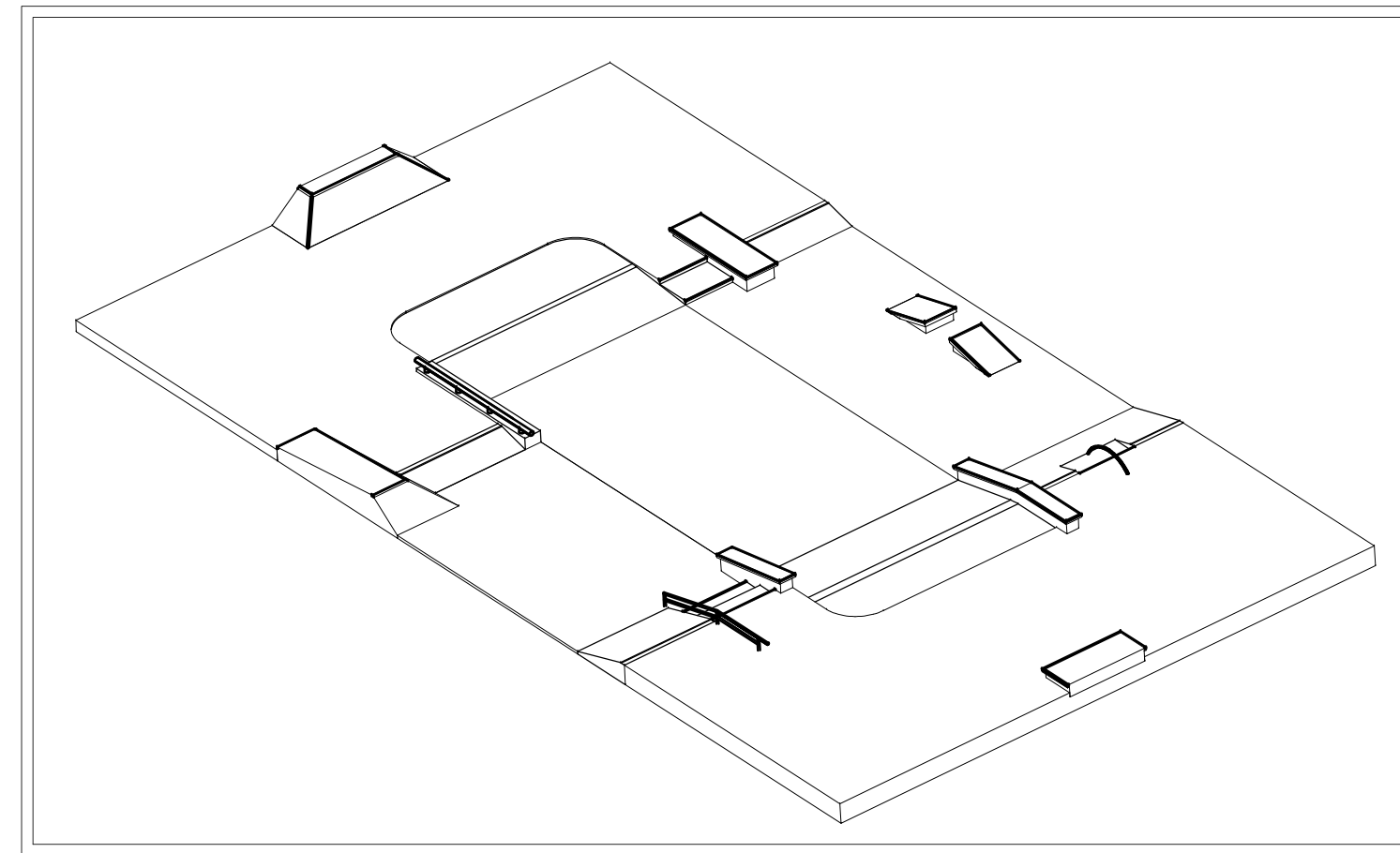




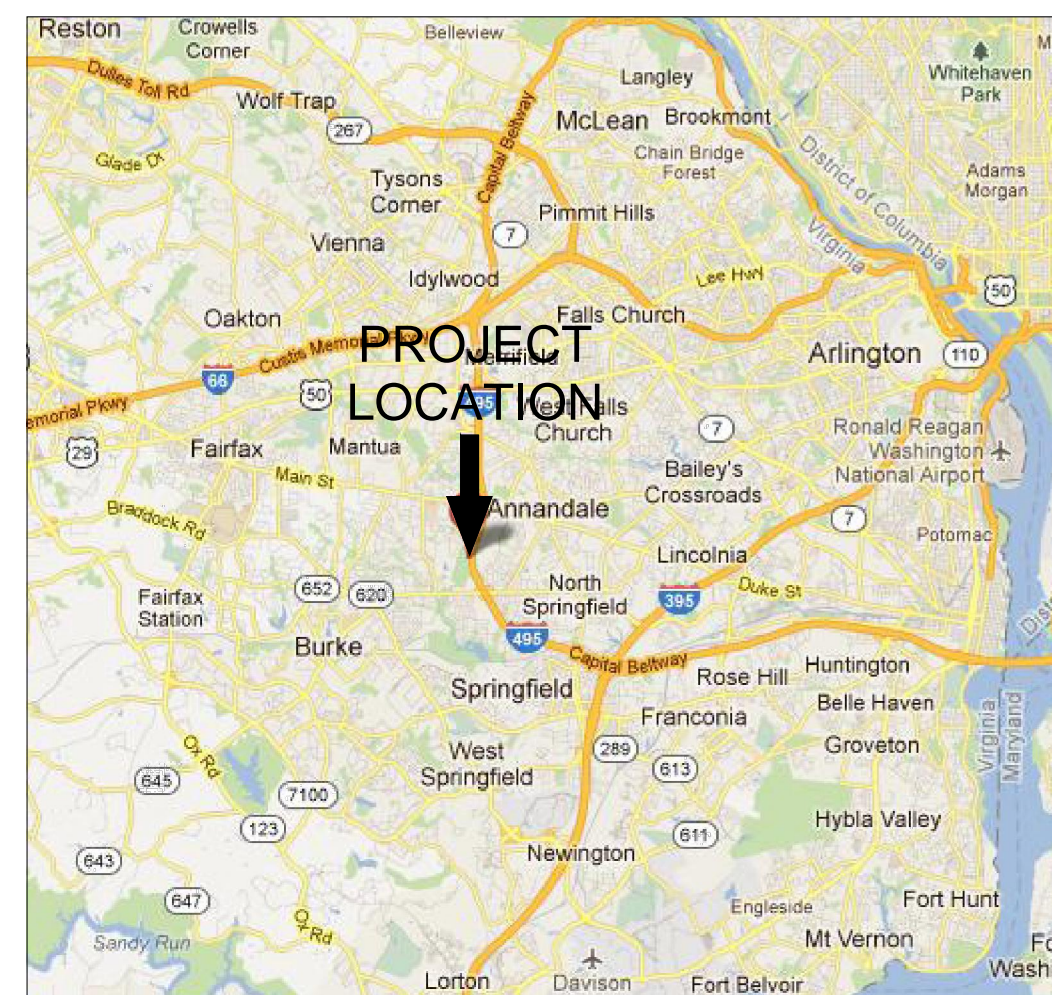
CONSTRUCTION PLAN SET PREPARED FOR FAIRFAX COUNTY, VA



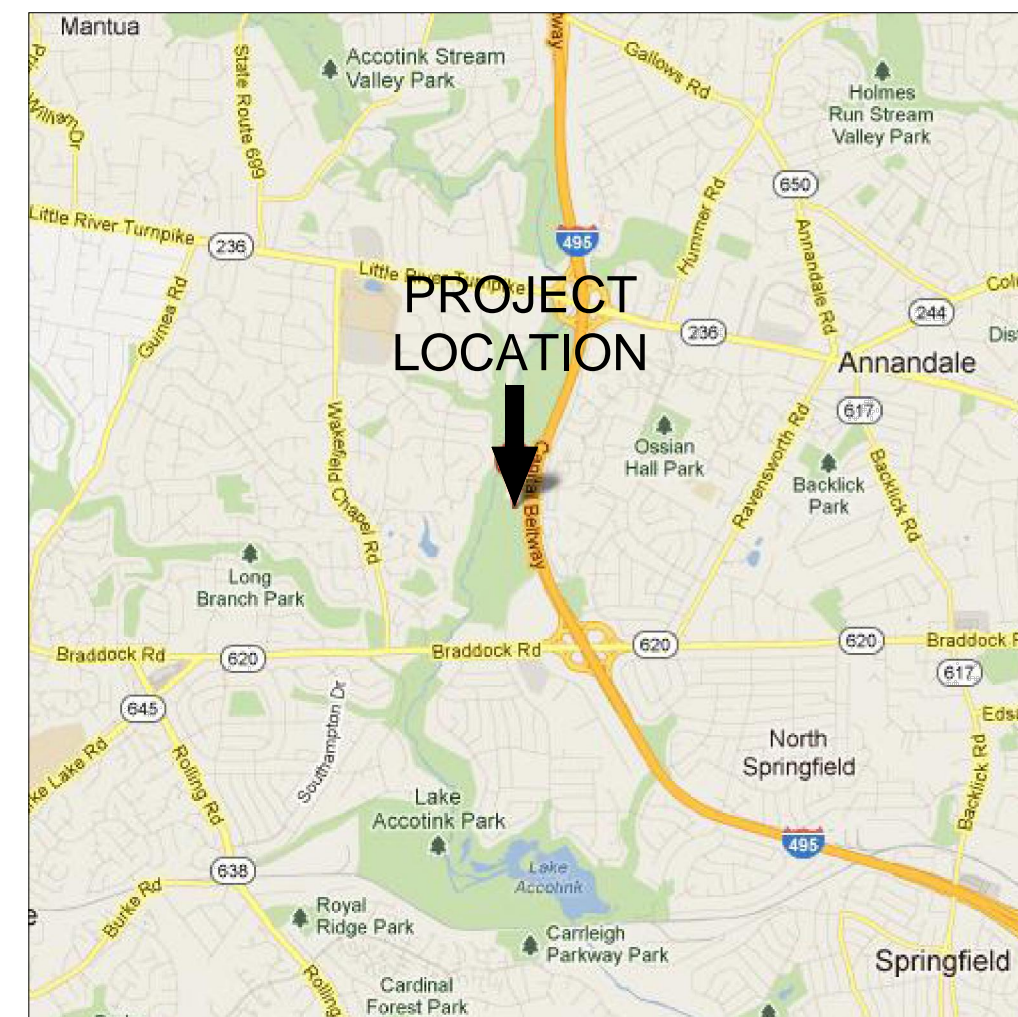
WAKEFIELD SKATE PARK

PLAN DATE IDENTIFIER
April 9, 2012
DATE OF LAST REVISIONS

VICINITY MAP



LOCATION MAP



PROJECT INFORMATION

OWNER/ DEVELOPER
FAIRFAX COUNTY PARK AUTHORITY
12055 GOVERNMENT CENTER PARKWAY, SUITE 406
FAIRFAX VA 22035

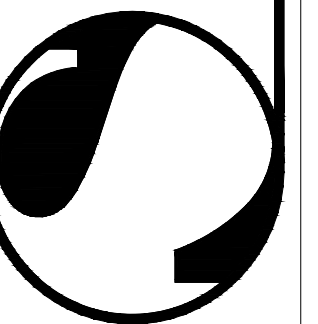
SITE ADDRESS
8100 BRADDOCK ROAD
ANNANDALE, VA 22003

SKATE PARK FOOTPRINT
6220 SQ.FT.

SHEET INDEX

- 1 TITLE SHEET
- 2 SITE PLAN
- 3 3D PERSPECTIVE
- 4 CONSTRUCTION SPECIFICATIONS
- 5 CONSTRUCTION INFORMATION PLAN
- 6 CONSTRUCTION PLAN
- 7 CONSTRUCTION SECTIONS
- 8 STEEL PLAN
- 9 GRADING & DRAINAGE PLAN
- 10 CONSTRUCTION DETAILS

**SPOHN RANCH
SKATE PARKS**
PLANNING • DESIGN • CONSTRUCTION
15131 CLARK AVE. CITY OF INDUSTRY, CA 91745
OFFICE (626) 330-5803
FAX (626) 330-5503



The use of these plans shall be restricted to the original site for which they were prepared, and publication thereof is limited to such use. Reproduction, publication or use of these plans in whole or part, without express written consent from Spohn Ranch, Inc. is prohibited. Title to these plans and concepts belongs to Spohn Ranch, Inc. without prejudice. Visual contact with or any other use of the plans shall be at the sole discretion and expense of these restrictions. Copyright © 2012 Spohn Ranch, Inc.

REVISIONS	
NO	DESCRIPTION

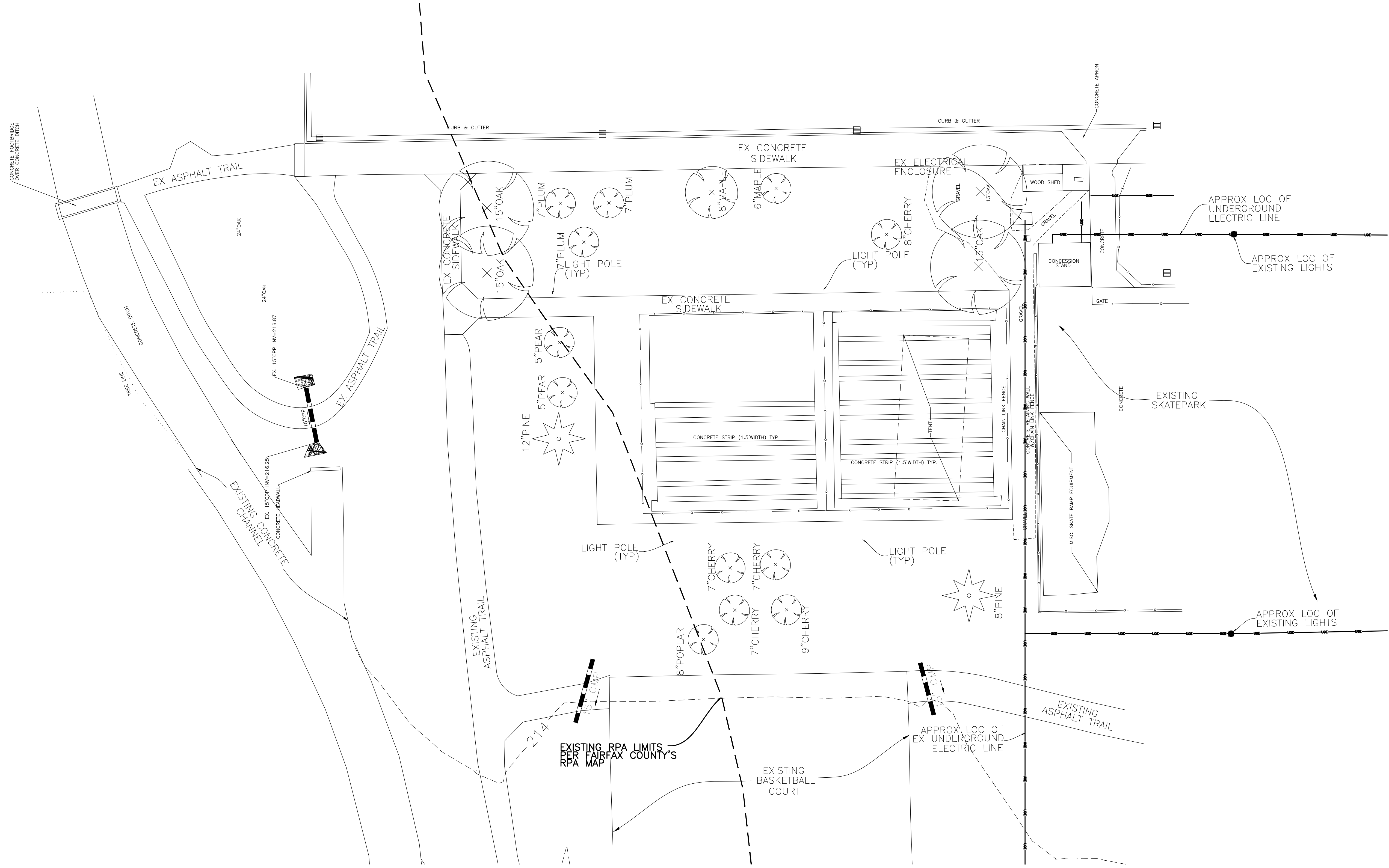
SKATE PARK DESIGNED BY	
DPS	DATE

DOCUMENTS BY	
SLR	DATE

PLAN CHECKED BY	
DCH	DATE

PROJECT TITLE
**FAIRFAX COUNTY, VA
WAKEFIELD SKATE PARK**
SHEET TITLE
TITLE SHEET

SHEET NO.
1
OF 10

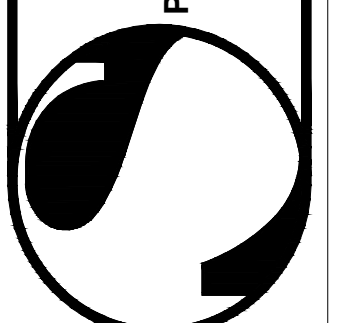


811
 Know what's below.
 Call before you dig.

NORTH

SCALE: 3/16"=1'-0"

**SPOHN RANCH
 SKATE PARKS**
 PLANNING • DESIGN • CONSTRUCTION
 15131 CLARK AVE. CITY OF INDUSTRY, CA 91745
 OFFICE (626) 330-5803
 FAX (626) 330-5503

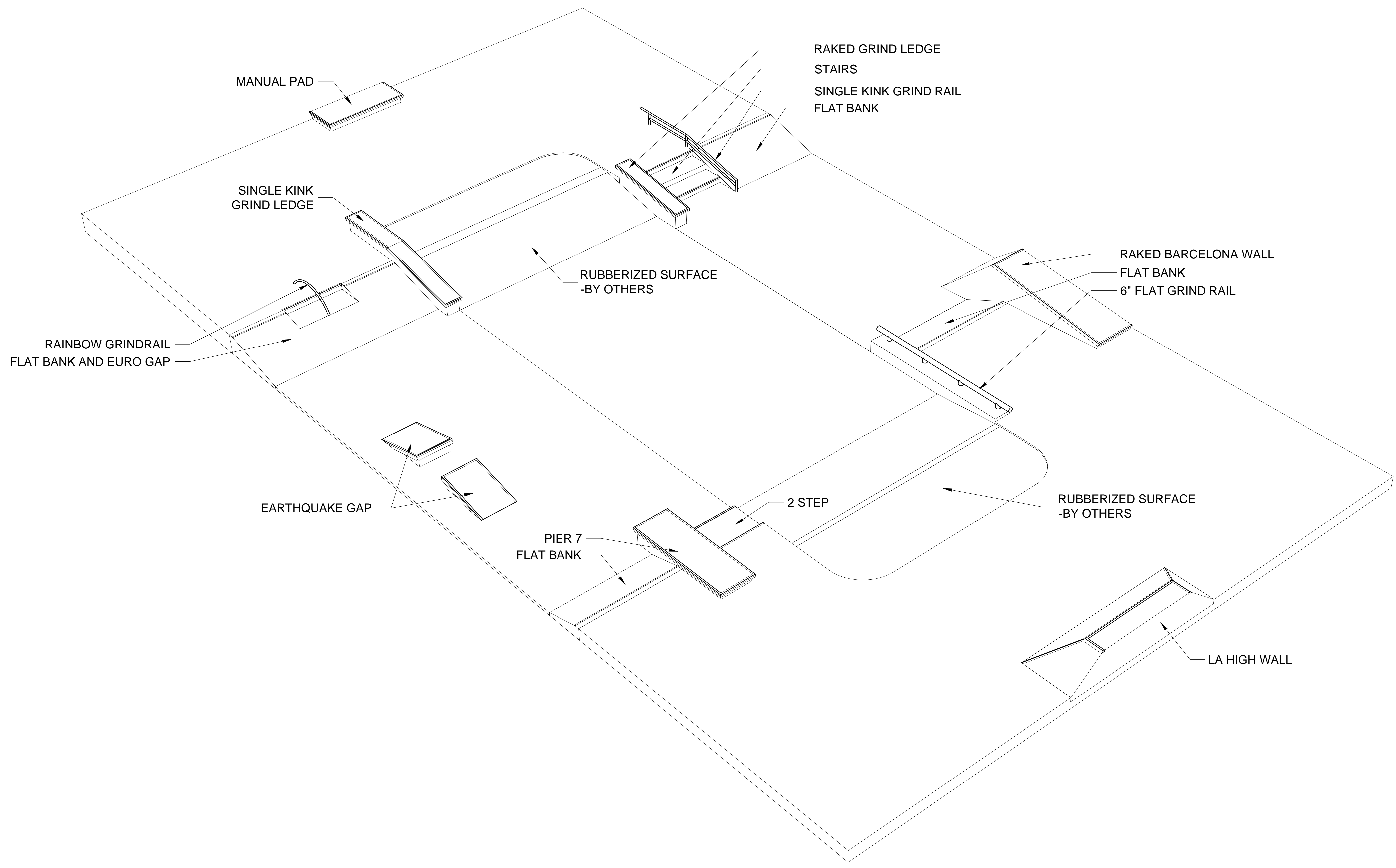


The use of these plans shall be restricted to the original site for which they were prepared, and publication hereof is limited to such use. Reproduction, publication or use of these plans in whole or in part, without the express written consent from Spohn Ranch, Inc. is prohibited. Title to these plans and concepts belongs to Spohn Ranch, Inc. without prejudice. Visual contact with or any other use of the plans shall be at the user's own risk and without the benefit of any warranty or other restrictions.
 Copyright © 2012 Spohn Ranch, Inc.

SKATE PARK DESIGNED BY		REVISIONS	
NO	DATE	NO	DESCRIPTION
DPS			
DOCUMENTS BY			
SLR			
PLAN CHECKED BY			
DCH			
DATE	2.23.12		

PROJECT TITLE
**FAIRFAX COUNTY, VA
 WAKEFIELD SKATE PARK**

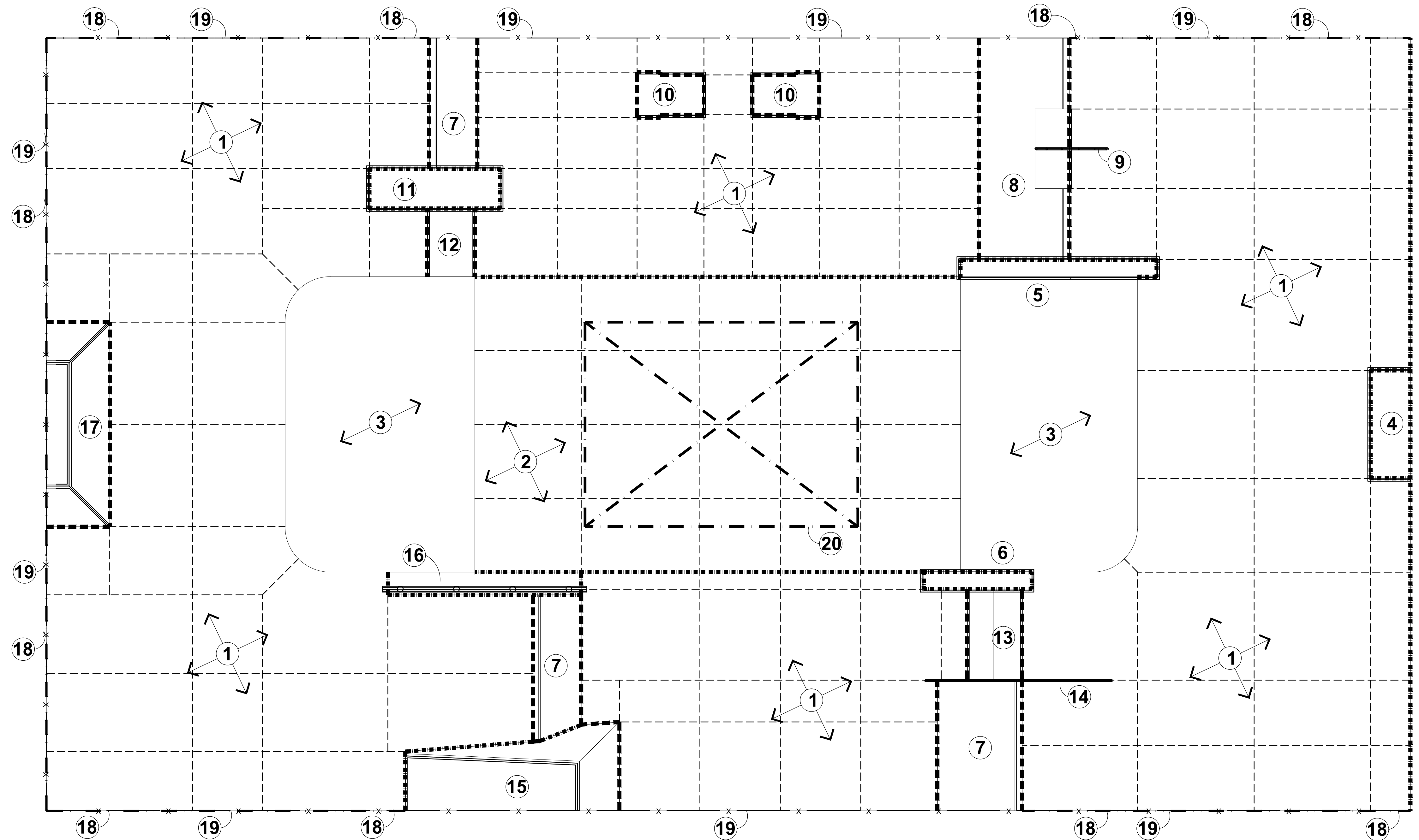
SHEET TITLE
EXISTING SITE PLAN



The use of these plans shall be restricted to the original site for which they were prepared, and publication hereof is limited to such use. Reproduction, publication or distribution of these plans, in whole or in part, without express written consent from Spohn Ranch, Inc. is prohibited. Title to these plans and concepts belongs to Spohn Ranch, Inc. without prejudice. Visual contact with or any other use of the plans at any time shall constitute a violation of these restrictions. Copyright © 2012 Spohn Ranch, Inc.

SKATE PARK DESIGNED BY		REVISIONS	
NO	DATE	NO	DESCRIPTION
DPS		1	
DOCUMENTS BY		2	
SLR		3	
PLAN CHECKED BY		4	
DCH		5	
DATE	2.23.12	6	

PROJECT TITLE
**FAIRFAX COUNTY, VA
WAKEFIELD SKATE PARK**
SHEET TITLE
SKATE PARK PERSPECTIVE



CONSTRUCTION INFORMATION LEGEND

- ① 4" THICK CONCRETE FLAT WORK - SEE TYPICAL DETAILS ON SHEET 10
- ② 4" THICK CONCRETE FLAT WORK BY OTHERS
- ③ RUBBERIZED SURFACE - BY OTHERS
- ④ COLORED CONCRETE MANUAL PAD - SEE CONSTRUCTION SECTIONS ON SHEET 7 & DETAILS ON SHEET 10
- ⑤ COLORED CONCRETE SINGLE KINKED GRIND LEDGE - SEE CONSTRUCTION SECTIONS ON SHEET 7 & DETAILS ON SHEET 10
- ⑥ COLORED CONCRETE RAKED GRIND LEDGE - SEE CONSTRUCTION SECTIONS ON SHEET 7 & DETAILS ON SHEET 10
- ⑦ FLAT BANK - SEE CONSTRUCTION SECTIONS ON SHEET 7 & DETAILS ON SHEET 10
- ⑧ EURO GAP - SEE CONSTRUCTION SECTIONS ON SHEET 7 & DETAILS ON SHEET 10
- ⑨ RAINBOW GRIND RAIL - SEE CONSTRUCTION SECTIONS ON SHEET 7 & DETAILS ON SHEET 10
- ⑩ COLORED CONCRETE EARTHQUAKE GAP - SEE CONSTRUCTION SECTIONS ON SHEET 7 & DETAILS ON SHEET 10
- ⑪ COLORED CONCRETE PIER 7 - SEE CONSTRUCTION SECTIONS ON SHEET 7 & DETAILS ON SHEET 10
- ⑫ 2 STEP - SEE CONSTRUCTION SECTIONS ON SHEET 7 & DETAILS ON SHEET 10
- ⑬ STAIRS - SEE CONSTRUCTION SECTIONS ON SHEET 7 & DETAILS ON SHEET 10
- ⑭ SINGLE KINK GRIND RAIL - SEE CONSTRUCTION SECTIONS ON SHEET 7 & DETAILS ON SHEET 10
- ⑮ COLORED CONCRETE RAKED BARCELONA WALL - SEE CONSTRUCTION SECTIONS ON SHEET 7 & DETAILS ON SHEET 10
- ⑯ 6" FLAT GRIND RAIL ON LEDGE - SEE CONSTRUCTION SECTIONS ON SHEET 7 & DETAILS ON SHEET 10
- ⑰ COLORED CONCRETE LA HIGH WALL - SEE CONSTRUCTION SECTIONS ON SHEET 7 & DETAILS ON SHEET 10
- ⑱ TURN DOWN WALL - SEE DETAIL 2 ON SHEET 10
- ⑲ CHAINLINK FENCE - BY OTHERS - SEE DETAIL 17 ON SHEET 10
- ⑳ SHADE STRUCTURE - BY OTHERS

*COLORED CONCRETE TO BE RED AVAILABLE FROM DAVIS COLORS 1-800-356-4848

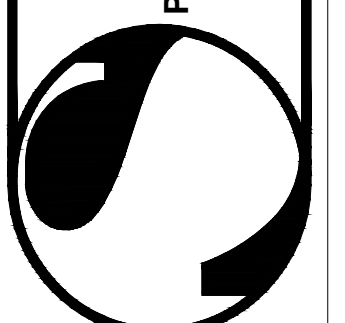
- EXPANSION JOINT
- COLD JOINT
- SAW CUT

**JOINT PLAN HAS BEEN DEVELOPED TO PROVIDE CONTRACTOR WITH BMP'S FOR THE USE OF SAW CUTS, COLD & EXPANSION JOINTS.

ALIGN SAW CUTS WITH EXPANSION AND COLD JOINTS AND START FROM CORNERS WHERE POSSIBLE TO PREVENT EXCESS CRACKING. SAW CUTS SHALL BE NO MORE THAN 10' X 12' AND/OR NOT TO EXCEED 120 SQUARE FEET BETWEEN SAW CUTS AND COLD OR EXPANSION JOINTS.

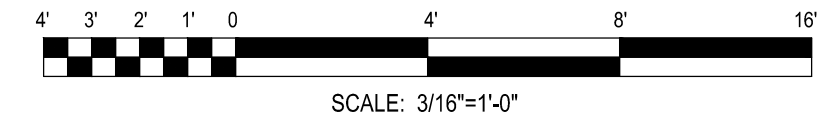
ALL JOINTS TO BE FILLED WITH POLYURETHANE BASED NON SAGGING ELASTOMERIC SEALANT AND TOOLED FLAT

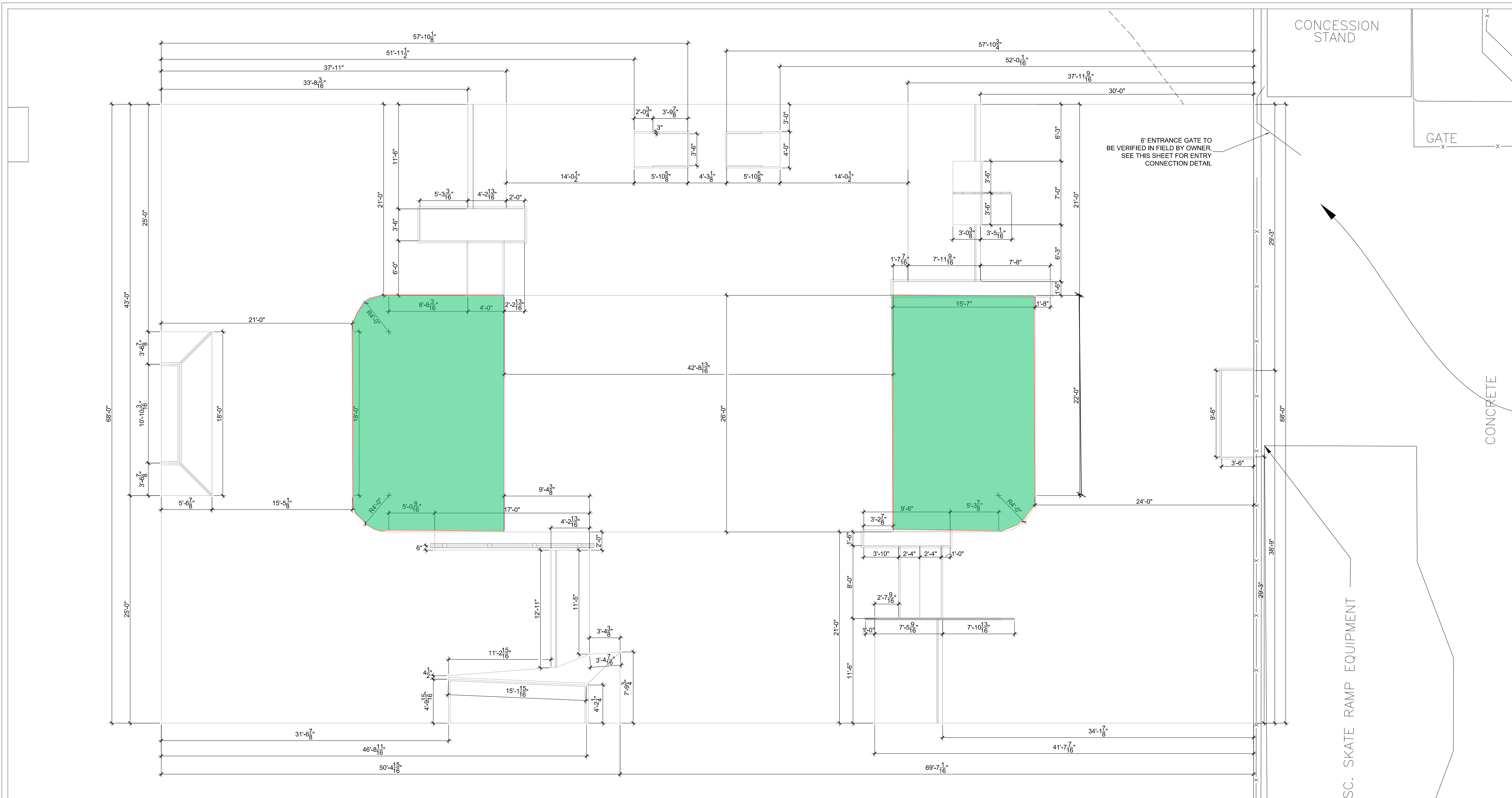
** SEE TYPICAL DETAILS & CONSTRUCTION SPECIFICATIONS FOR JOINT INFORMATION & INSTALLATION



The use of these plans shall be restricted to the original site for which they were prepared, and publication thereof is limited to such use. Reproduction, publication or use of these plans in whole or in part, without express written consent from Spohn Ranch, Inc. is prohibited. Title to these plans and concepts belongs to Spohn Ranch, Inc. without prejudice. Visual contact with or any other use of the plans shall be at the sole risk and responsibility of the user. Copyright © 2012 Spohn Ranch, Inc.

SKATE PARK DESIGNED BY		REVISIONS	
NO	DATE	NO	DESCRIPTION
DPS			
SLR			
DCH			
	2.23.12		

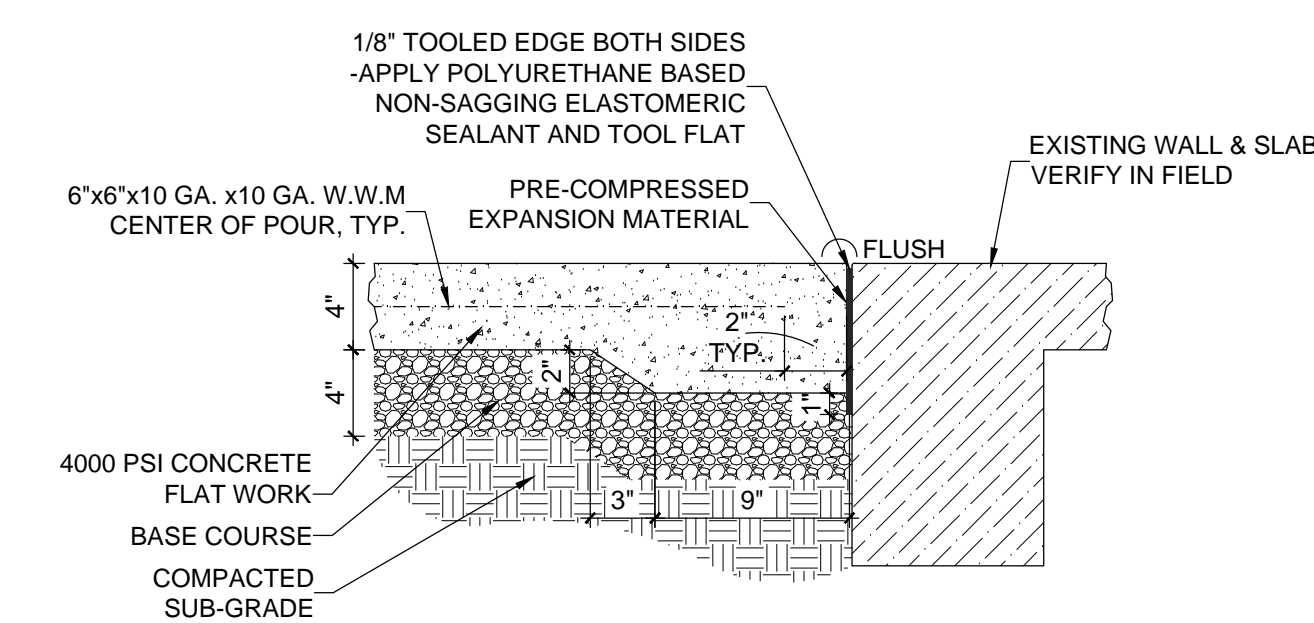




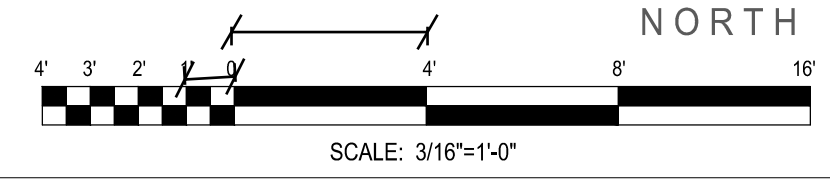
CONSTRUCTION NOTES

- ALL MATERIAL AND WORKMANSHIP SHALL CONFORM TO ALL APPLICABLE GOVERNING CODES AND ORDINANCES.
- ALL FORMS AND ALIGNMENTS OF PAVING, LAYOUT, AND SPECIAL PAVING AREAS SHALL BE REVIEWED AND APPROVED BY THE CITY'S AUTHORIZED REPRESENTATIVE PRIOR TO POURING (GIVE A MINIMUM OF 48 HOURS NOTICE)
- CONTRACTOR SHALL VERIFY THE LOCATION OF ALL PUBLIC IMPROVEMENTS, INCLUDING UNDERGROUND UTILITIES PRIOR TO THE START OF CONSTRUCTION. CONTRACTOR SHALL REPAIR AND/OR REPLACE IN-KIND ALL PUBLIC IMPROVEMENTS DAMAGED, BROKEN, OR REMOVED DURING CONSTRUCTION
- CONCRETE SHALL HAVE A MINIMUM COMPRESSIVE STRENGTH OF 4000 PSI AT 28 DAYS (UNLESS OTHERWISE NOTED)
- SHOTCRETE SHALL BE USED FOR ALL TRANSITION RAMP INSTALLATION. ALL OTHER CONCRETE WORK SHALL BE POURED.
- ALL REBAR CROSSING TO BE TIED.
- ALL CONSTRUCTION TO BE PLUMB AND TRUE, UNLESS OTHERWISE NOTED OR INDICATED.
- THE CONTRACTOR SHALL VERIFY AND BE RESPONSIBLE FOR ALL DIMENSIONS AND CONDITIONS AT THE JOB SITE. ALL DISCREPANCIES SHALL BE BROUGHT TO THE IMMEDIATE ATTENTION OF THE SKATE PARK DESIGNER, OWNER/BUILDER OR OWNER'S REPRESENTATIVE.
- THE CONTRACTOR IS SOLELY RESPONSIBLE FOR ALL CONSTRUCTION METHODS AND FOR SAFETY CONDITIONS AT THE WORK SITE.
- ALL BRACING, TEMPORARY SUPPORTS, SHORING, ETC.. ARE THE SOLE RESPONSIBILITY OF THE CONTRACTOR. OBSERVATION VISITS TO THE JOB SITE BY THE SKATE PARK DESIGNER OR OWNER, DO NOT INCLUDE INSPECTION OF CONSTRUCTION PROCEDURES. THE VISIT SHALL NOT BE CONSTRUED AS CONTINUOUS AND DETAILED INSPECTIONS.
- CONDITIONS NOT SPECIFICALLY SHOWN SHALL BE CONSTRUCTED SIMILAR TO THE DETAILS FOR THE RESPECTIVE MATERIALS.
- THE DRAWINGS AND SPECIFICATIONS REPRESENT THE FINISHED CONSTRUCTION PRODUCT. THESE DOCUMENTS, ALTHOUGH PREPARED WITH CARE AND DILIGENCE, MAY CONTAIN ERRORS, OMISSIONS, CONTRADICTIONS, ETC. THE CONTRACTOR SHALL REVIEW ALL DOCUMENTS THOROUGHLY AND SHALL NOTIFY THE SKATE PARK DESIGNER IMMEDIATELY UPON ANY SUCH DISCOVERY OR DISCREPANCY. GOVERNING CODES SHALL THEN APPLY.
- ALL SCALE DIMENSIONS ARE APPROXIMATE. WRITTEN DIMENSIONS AND DETAILS TAKE PRECEDENCE OVER SCALED DIMENSIONS. THE CONTRACTOR SHALL CHECK AND VERIFY ALL SITE DIMENSIONS PRIOR TO PROCEEDING WITH WORK AND CLARIFY WITH SKATE PARK DESIGNER, OWNER IF NECESSARY.
- DESIGN, MATERIAL, EQUIPMENT AND PRODUCTS OTHER THEN THOSE DESCRIBED OR INDICATED ON DRAWINGS MAY BE CONSIDERED FOR USE. APPROVAL FOR SUBSTITUTIONS SHALL BE OBTAINED FROM THE SKATE PARK DESIGNER
- SHOP DRAWINGS SHALL BE SUBMITTED BY THE CONTRACTOR FOR THE CLARIFICATION OF DESIGN CONCEPT DETAILS & SUBSTITUTIONS.
- DURING WORK AND THROUGH ITS COMPLETION, THE CONTRACTOR SHALL KEEP THE SITE CLEAN TO THE SATISFACTION OF THE OWNER.
- FINAL MATERIAL, FINISHES AND COLOR SHALL BE APPROVED BY OWNER AND SKATE PARK DESIGNER, BY SAMPLES, PRIOR TO INSTALLATION.
- CLEAN-UP SHALL TAKE PLACE ON A DAILY BASIS.
- REFER TO SPECIFICATIONS FOR ANY ADDITIONAL INFORMATION.

****ALL COLD JOINTS AT THE BOTTOM OF ALL RADIUS TRANSITIONS & RADIUS BANKS SHALL BE LOCATED 8" MAX. FROM THE POINT OF TANGENCY. SEE TYPICAL DETAILS FOR CLARIFICATION.**



ENTRY CONNECTION DETAIL



PROJECT TITLE
FAIRFAX COUNTY, VA
WAKEFIELD SKATE PARK

SHEET TITLE
CONSTRUCTION PLAN

SKATE PARK DESIGNED BY
DPS

DOCUMENTS BY
SLR

PLAN CHECKED BY
DCH

DATE
2.23.12

REVISIONS

NO	DATE	DESCRIPTION

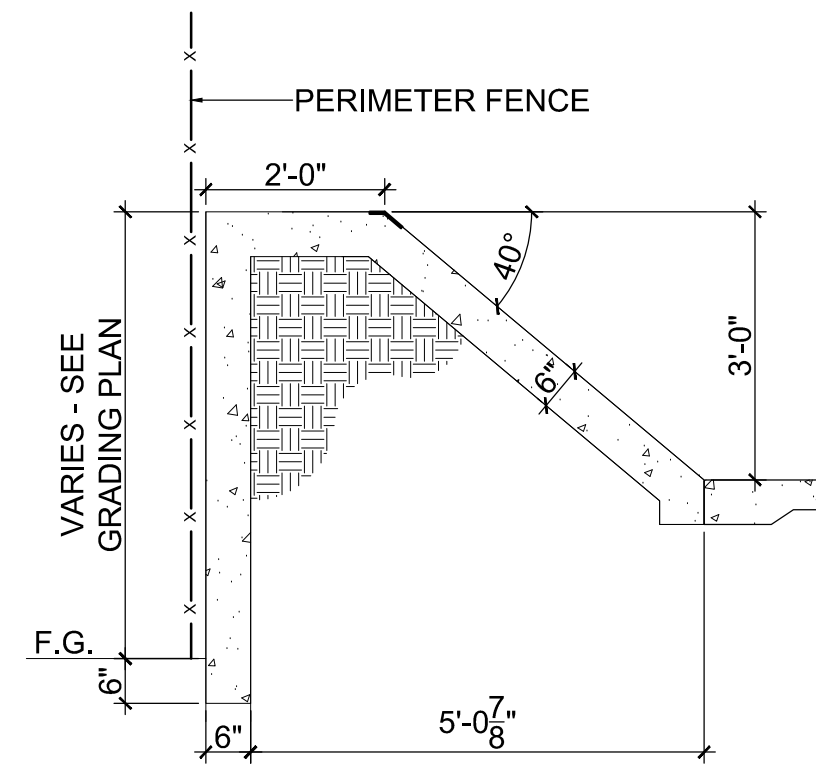
BY

THE USE OF THESE PLANS SHALL BE RESTRICTED TO THE ORIGINAL SITE FOR WHICH THEY WERE PREPARED, AND PUBLICATION HEREIN IS LIMITED TO SUCH USE. REPRODUCTION, PUBLICATION OR TRANSMISSION OF THESE PLANS IN WHOLE OR IN PART, WITHOUT EXPRESS WRITTEN CONSENT FROM SPOHN RANCH, INC. IS PROHIBITED. TITLE TO THESE PLANS AND CONCEPTS BELONGS TO SPOHN RANCH, INC. WITHOUT PREJUDICE. VISUAL CONTACT WITH OR ANY OTHER USE OF THE PLANS SHALL BE AT THE USER'S SOLE RISK AND WITHOUT LIABILITY TO SPOHN RANCH, INC.

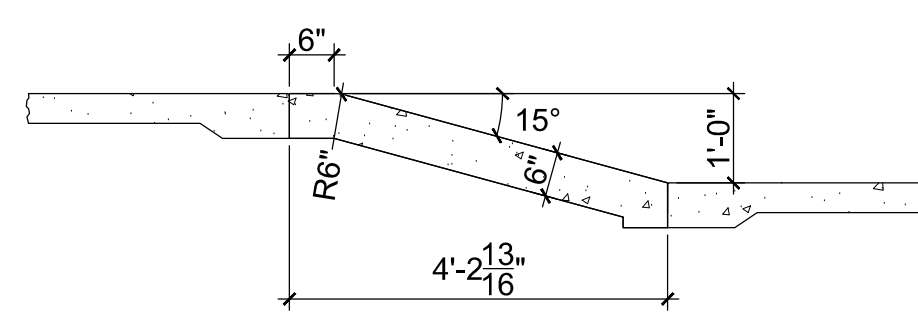
SPOHN RANCH SKATE PARKS
PLANNING · DESIGN · CONSTRUCTION
15131 CLARK AVE. · CITY OF INDUSTRY, CA 91745
OFFICE (626) 330-5803
FAX (626) 330-5503
Copyright © 2012 Spohn Ranch, Inc.

SHEET NO.
6

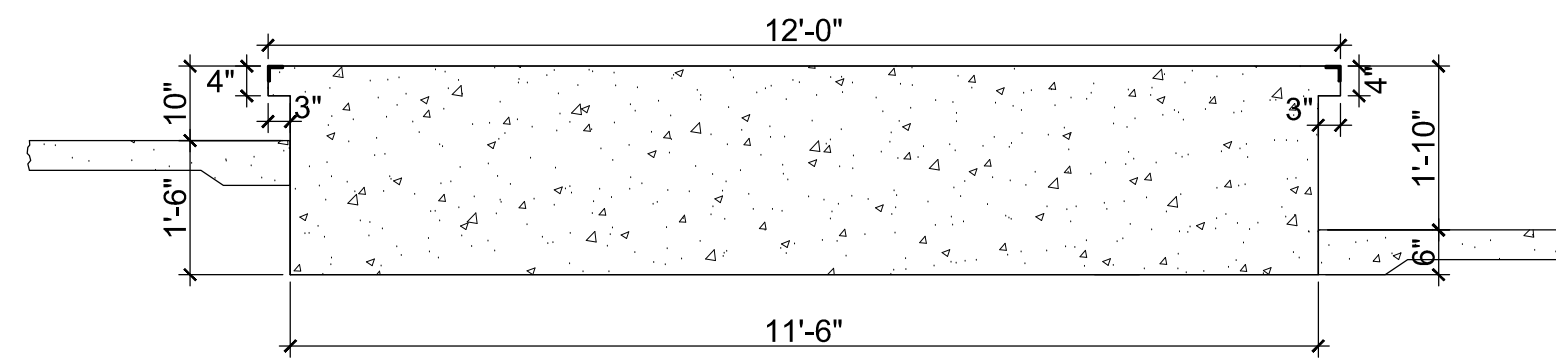
OF 10



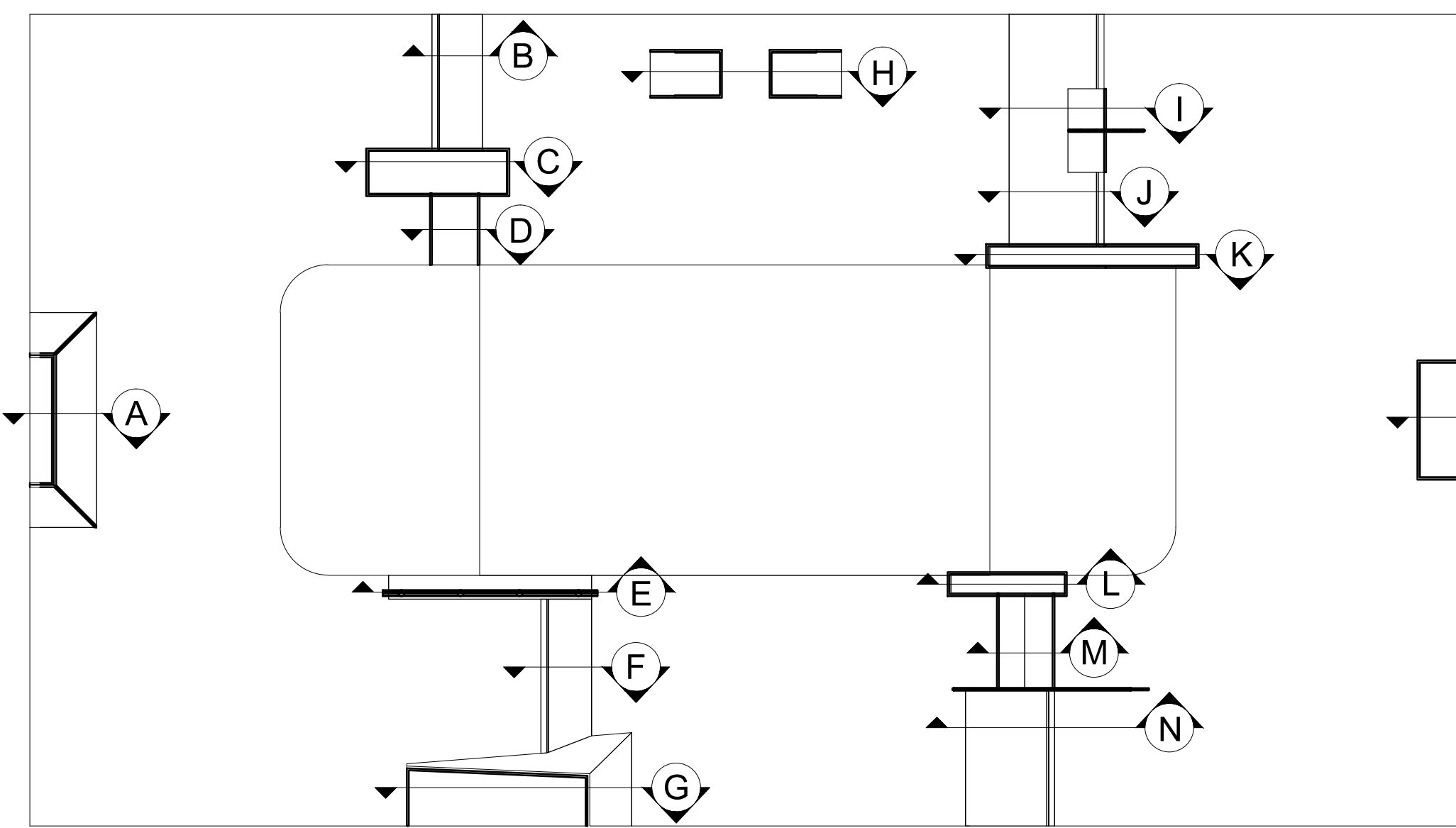
SECTION A



SECTION B



SECTION C



SPOHN RANCH SKATE PARKS
 PLANNING • DESIGN • CONSTRUCTION
 15131 CLARK AVE. CITY OF INDUSTRY, CA 91745
 OFFICE (626) 330-5803
 FAX (626) 330-5503
 Copyright © 2012 Spohn Ranch, Inc.

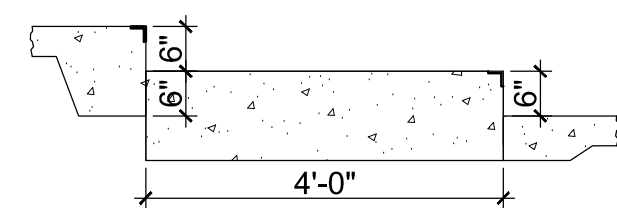
The use of these plans shall be restricted to the original site for which they were prepared, and publication thereof is prohibited without the express written consent of Spohn Ranch, Inc. No part of these plans, in whole or in part, without express written consent from Spohn Ranch, Inc. is prohibited. Title to these plans and concepts belongs to Spohn Ranch, Inc. without prejudice. Visual contact with or any other use of the plans shall be prohibited without the express written consent of Spohn Ranch, Inc.

NO	DATE	REVISIONS DESCRIPTION

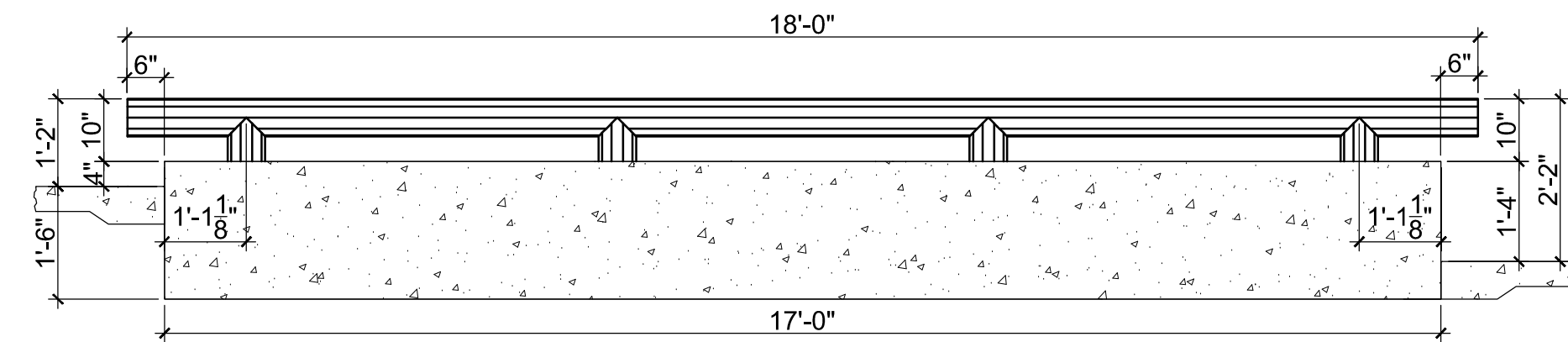
SKATE PARK DESIGNED BY	DPS
DOCUMENTS BY	SLR
PLAN CHECKED BY	DCH
DATE	2.23.12

PROJECT TITLE
**FAIRFAX COUNTY, VA
 WAKEFIELD SKATE PARK**
 SHEET TITLE
CONSTRUCTION SECTIONS

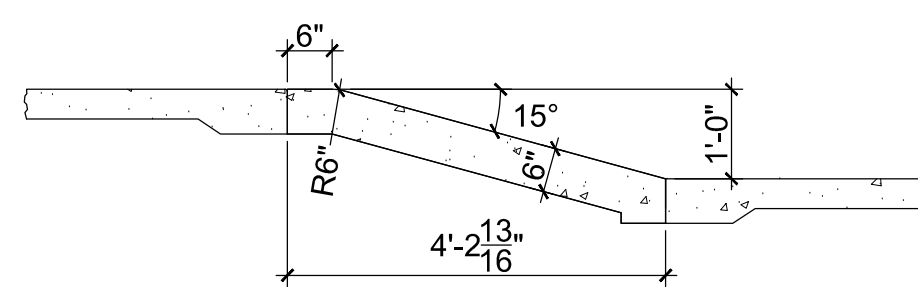
SHEET NO.
7
 OF 10



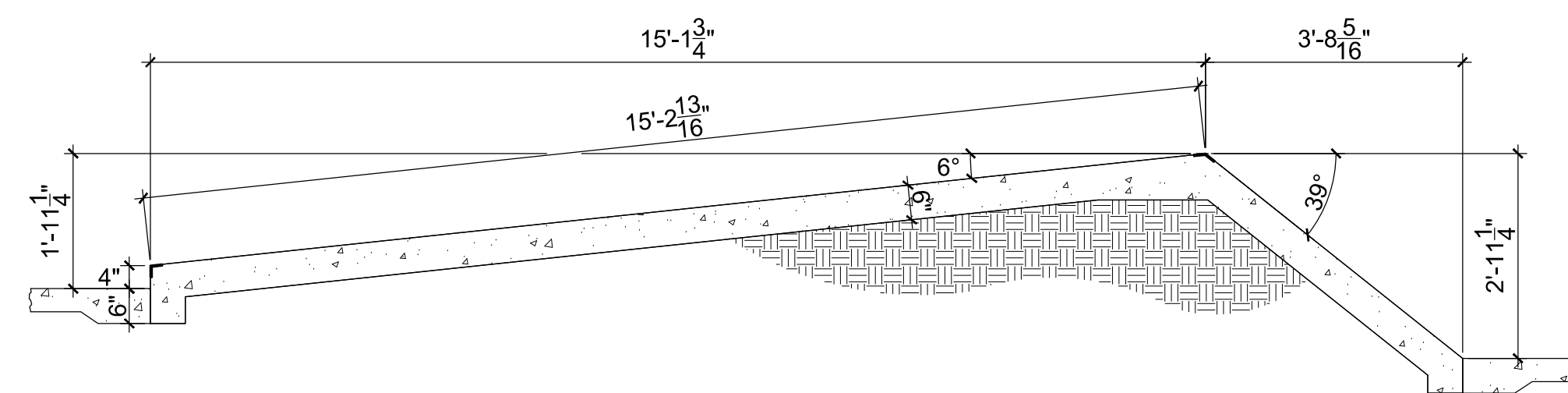
SECTION D



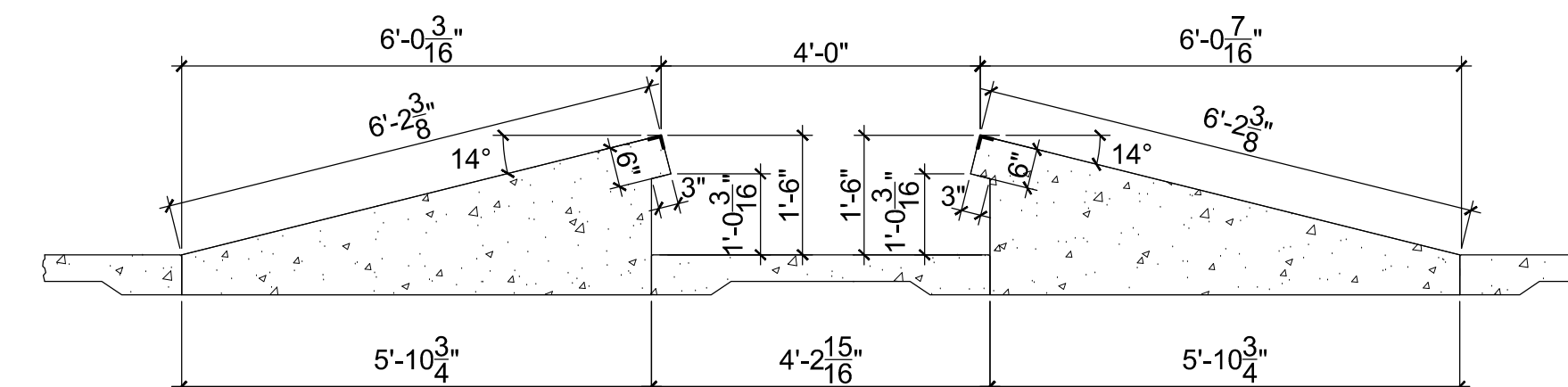
SECTION E



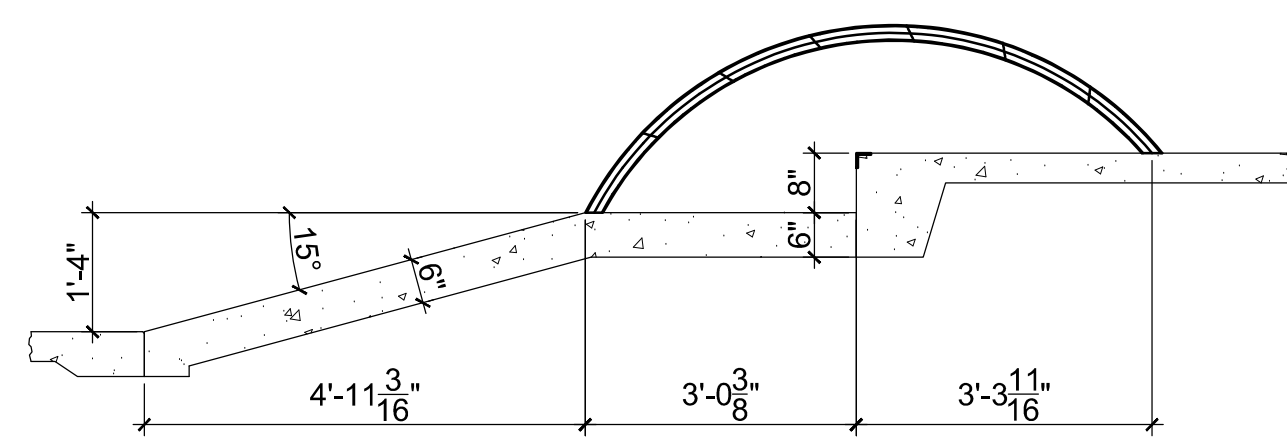
SECTION F



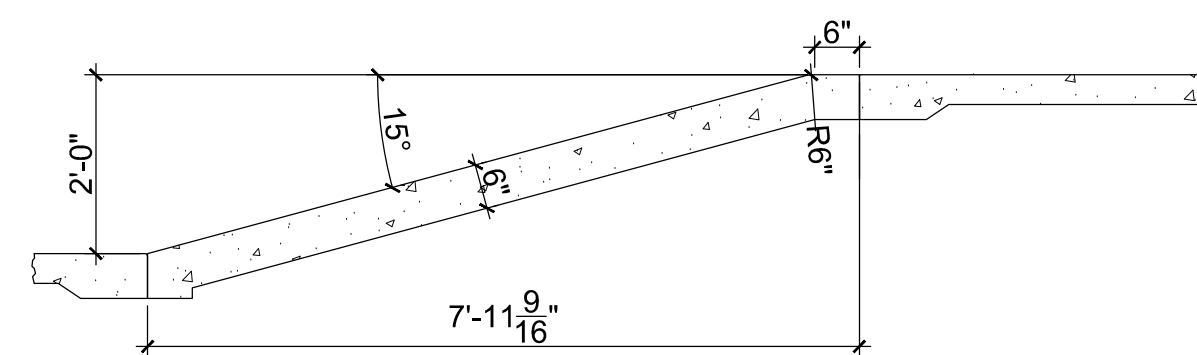
SECTION G



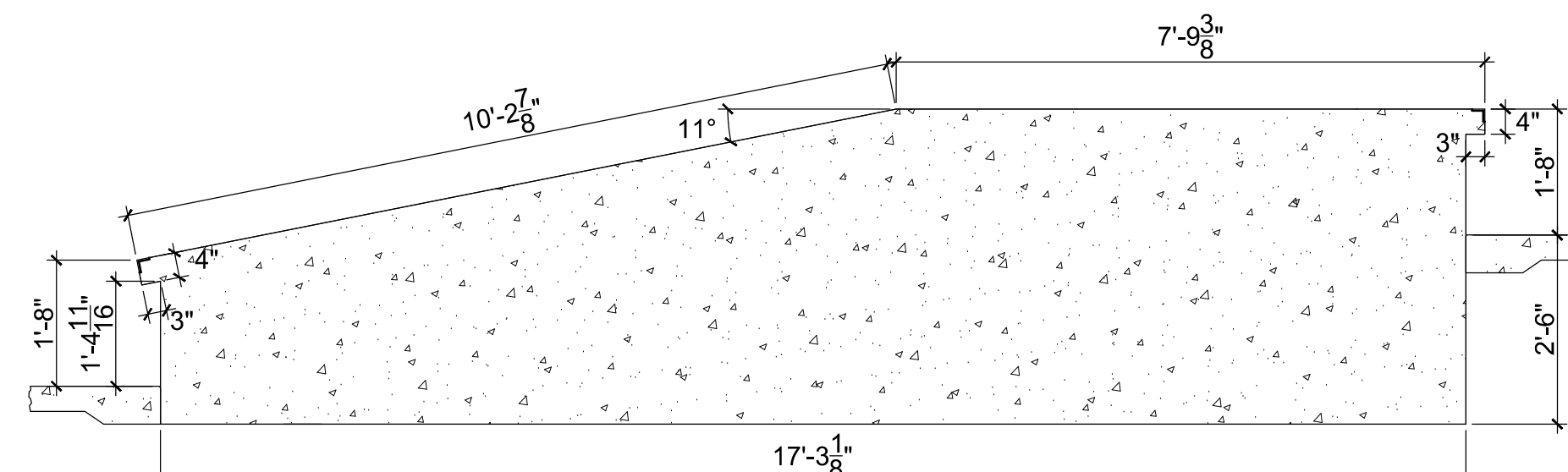
SECTION H



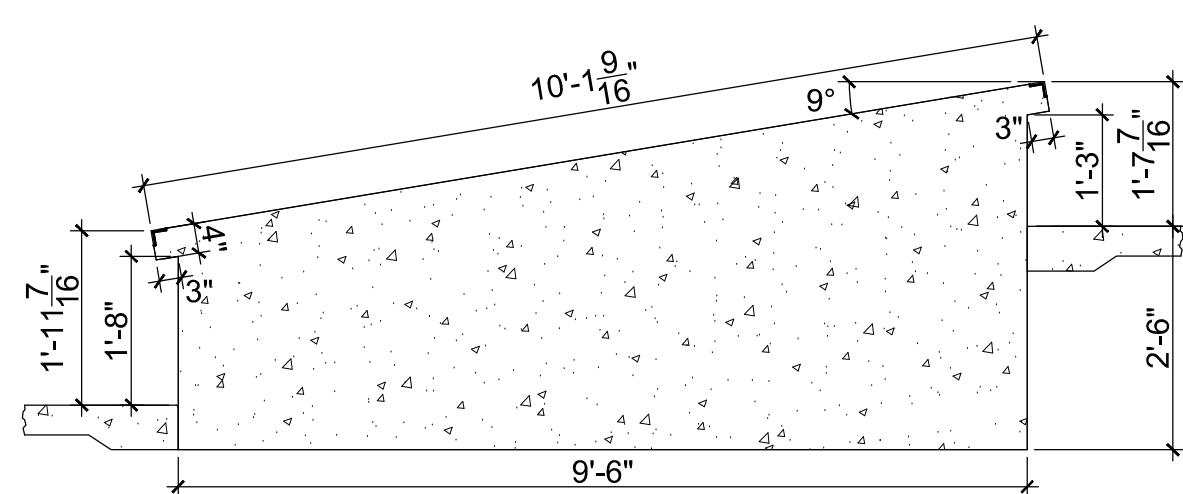
SECTION I



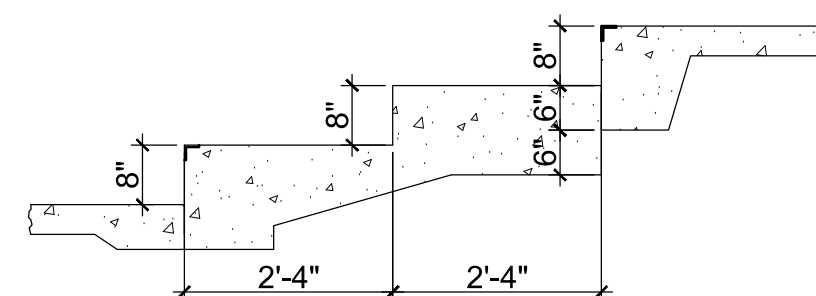
SECTION J



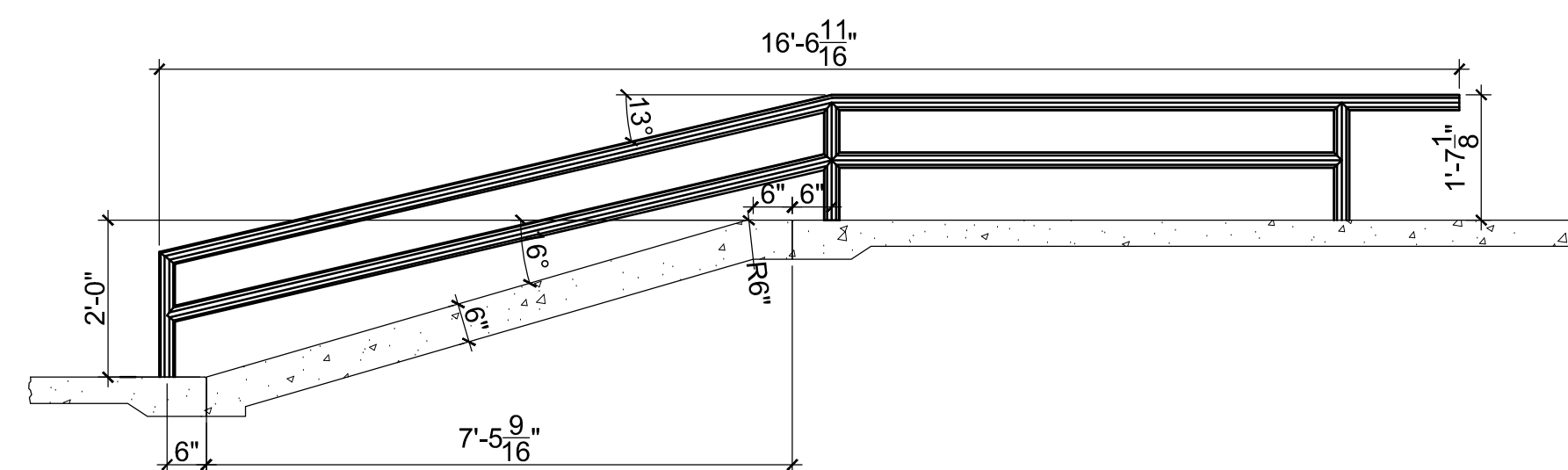
SECTION K



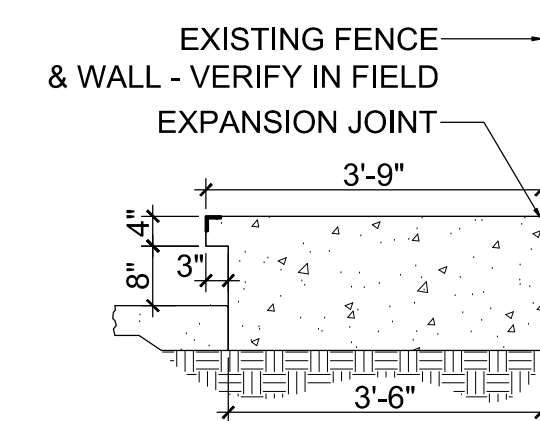
SECTION L



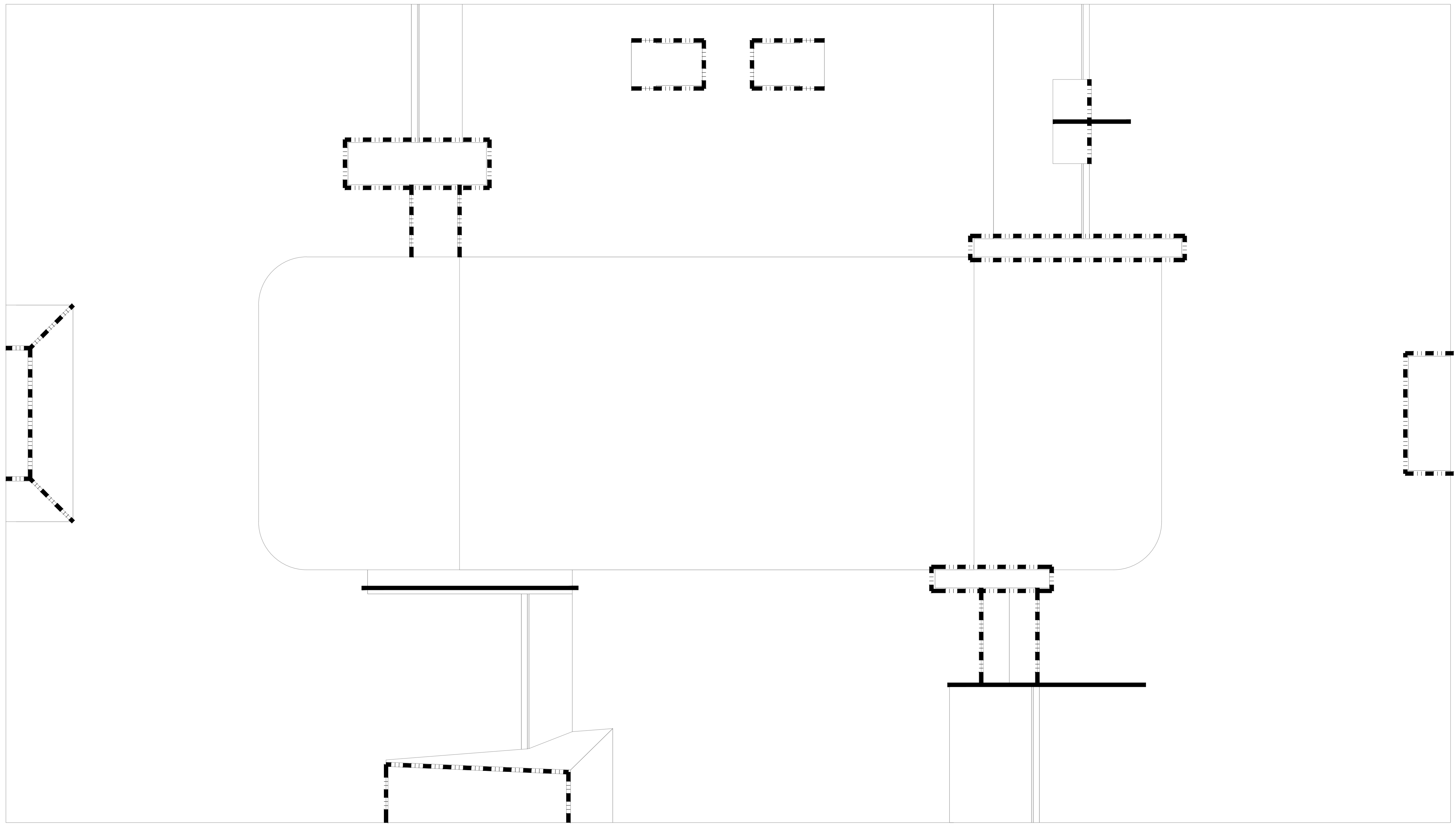
SECTION M



SECTION N

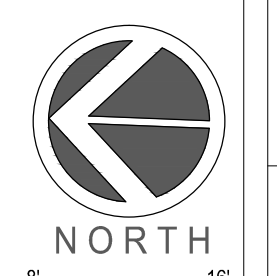
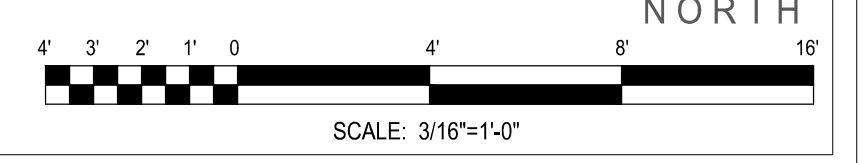


SECTION O

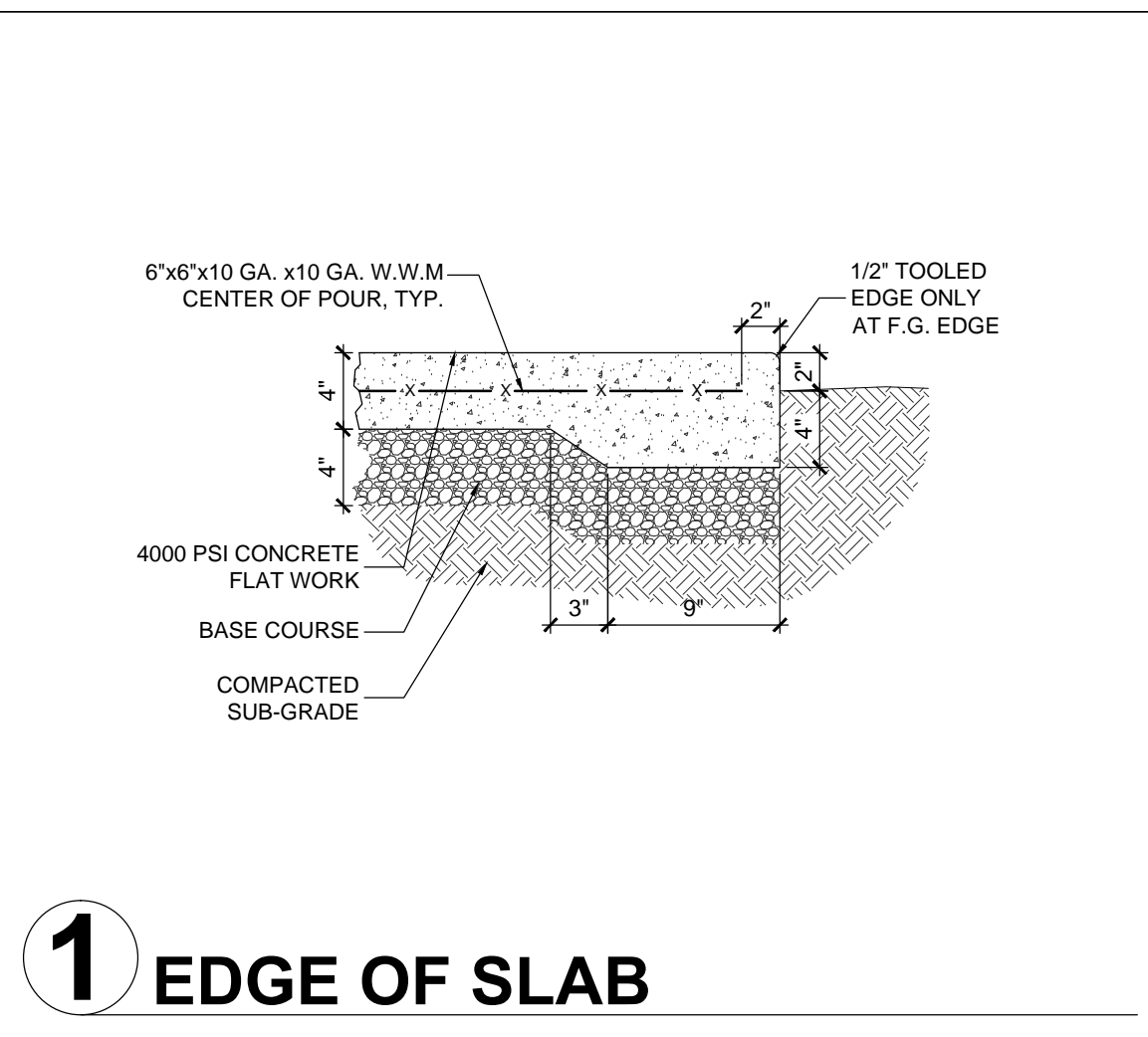


LEGEND			
SYMBOL	DESCRIPTION	FINISH	QTY
--- --- --- ---	1.5 x 2 x 3/16 THK. STEEL EDGING	HOT DIPPED GALVANIZED	226'-0" APPROX
—————	GRIND RAILS - SEE SHEET 10	HOT DIPPED GALVANIZED	-

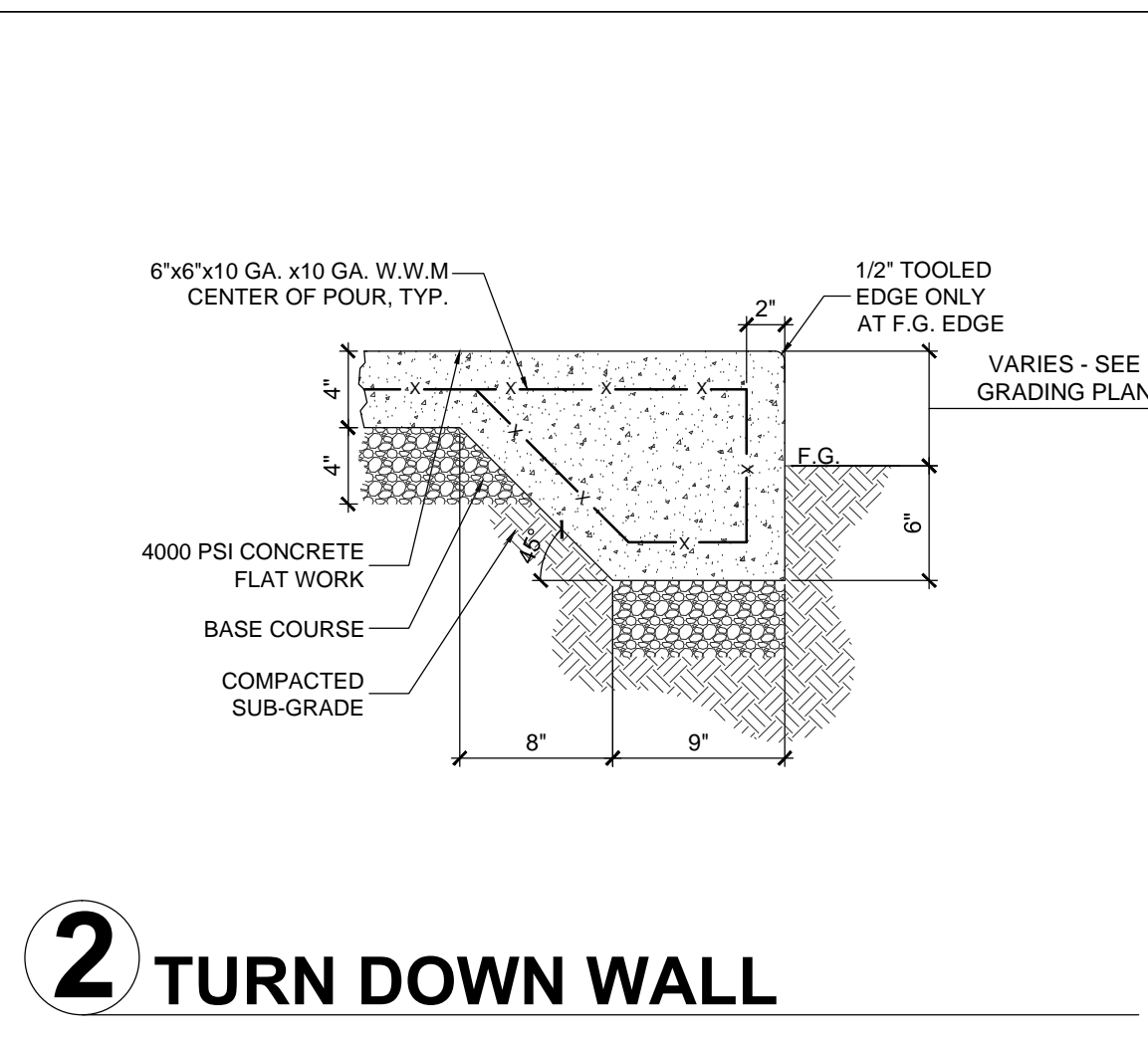
NOTES
 -ALL STEEL SIZES ARE NOMINAL
 -SEE CONSTRUCTION SPECIFICATIONS FOR STEEL SPECIFICATIONS



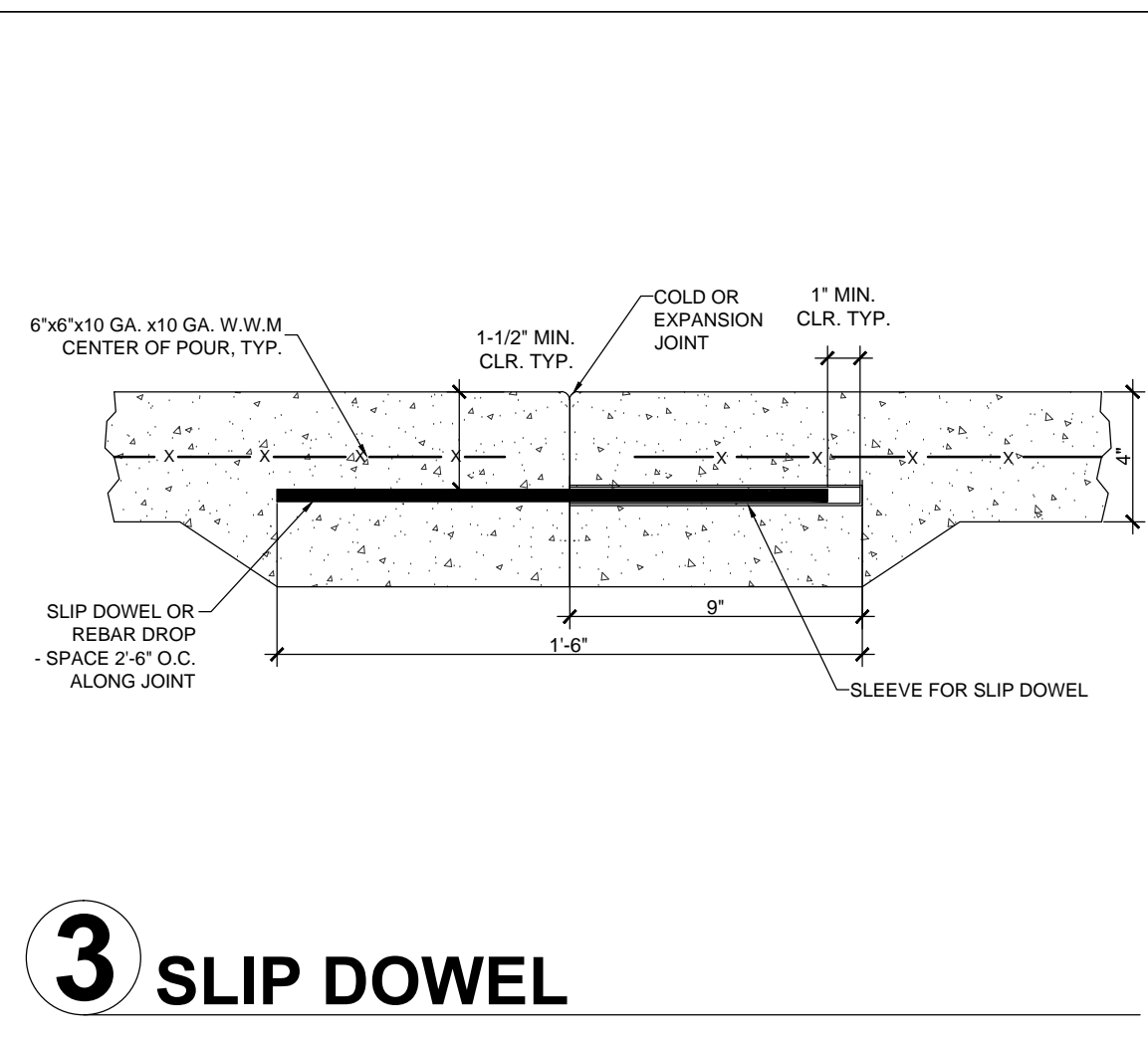
PROJECT TITLE FAIRFAX COUNTY, VA WAKEFIELD SKATE PARK		SKATE PARK DESIGNED BY DPS		REVISIONS NO. DATE DESCRIPTION	
SHEET TITLE STEEL PLAN		DOCUMENTS BY SLR		BY	
		PLAN CHECKED BY DCH		
		DATE 2.23.12		
SHEET NO. 8 OF 10				The use of these plans shall be restricted to the original site for which they were prepared, and publication thereof is limited to such use. Reproduction, publication or use of these plans in whole or part, without express written consent from Spohn Ranch, Inc. is prohibited. Title to these plans and concepts belongs to Spohn Ranch, Inc. without prejudice. Visual contact with or any other use of the plans shall be the responsibility of the user. Copyright © 2012 Spohn Ranch, Inc.	
		SPOHN RANCH SKATE PARKS PLANNING • DESIGN • CONSTRUCTION 15131 CLARK AVE. CITY OF INDUSTRY, CA 91745 OFFICE (626) 330-5803 FAX (626) 330-5503			



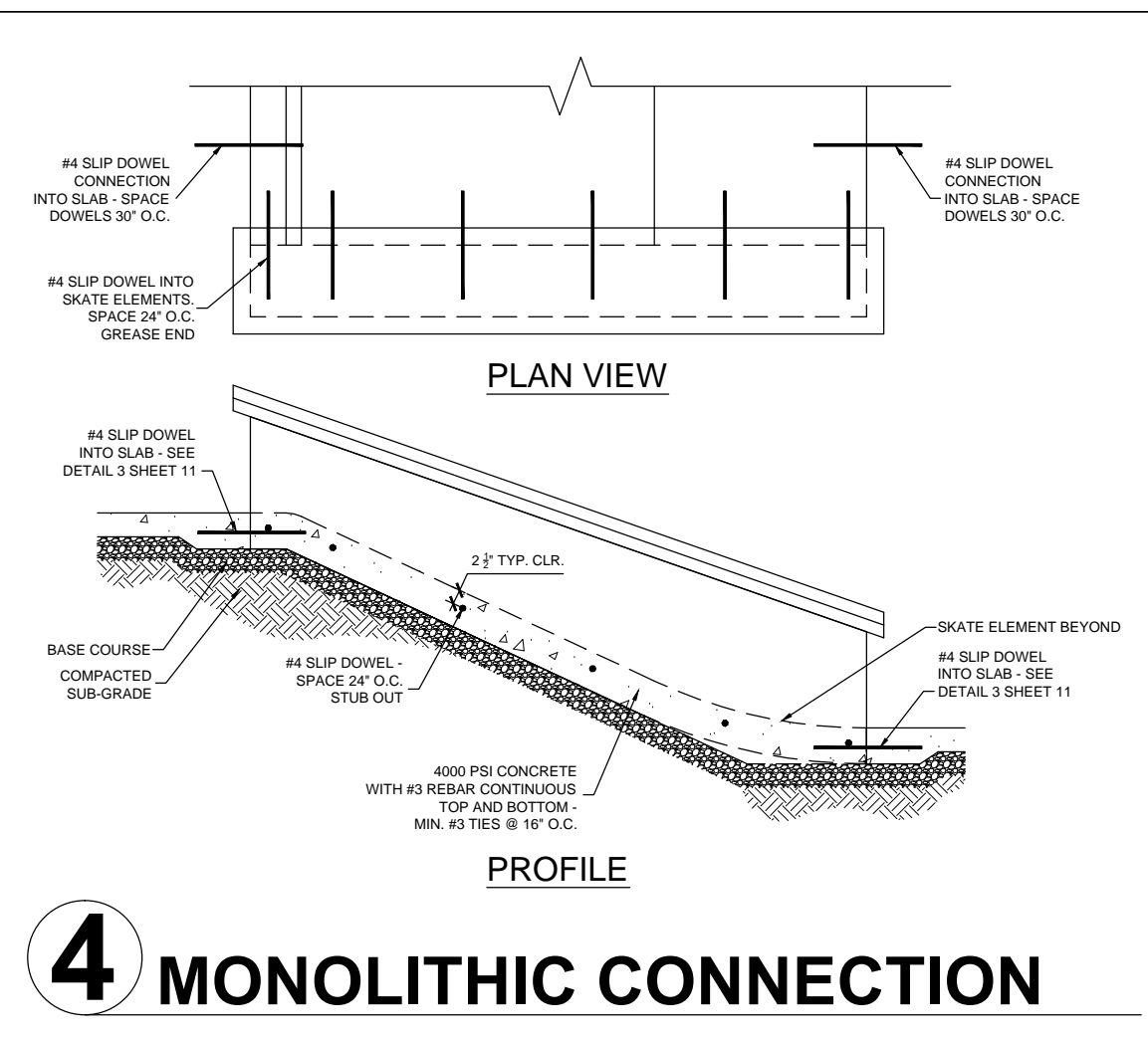
1 EDGE OF SLAB



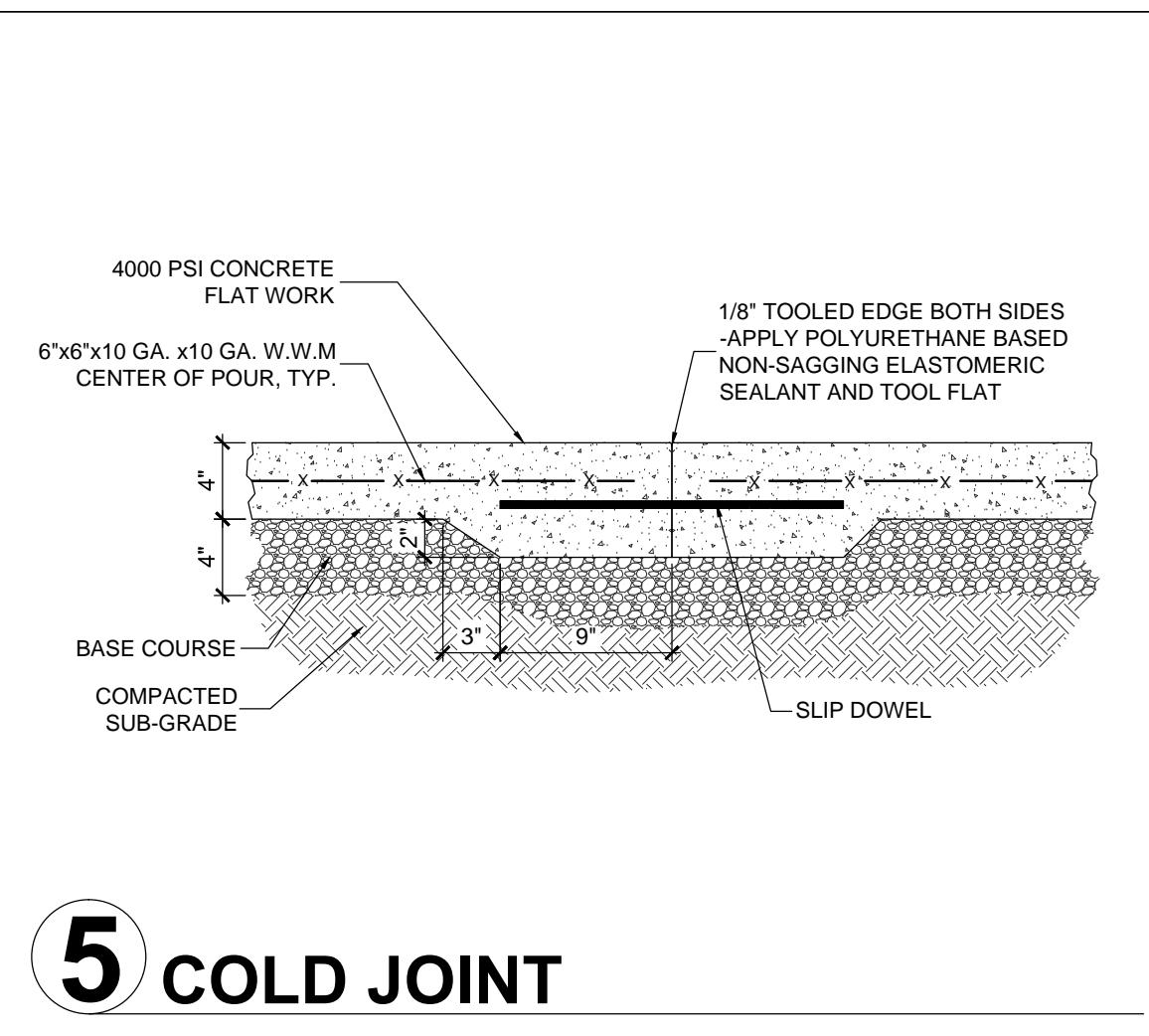
2 TURN DOWN WALL



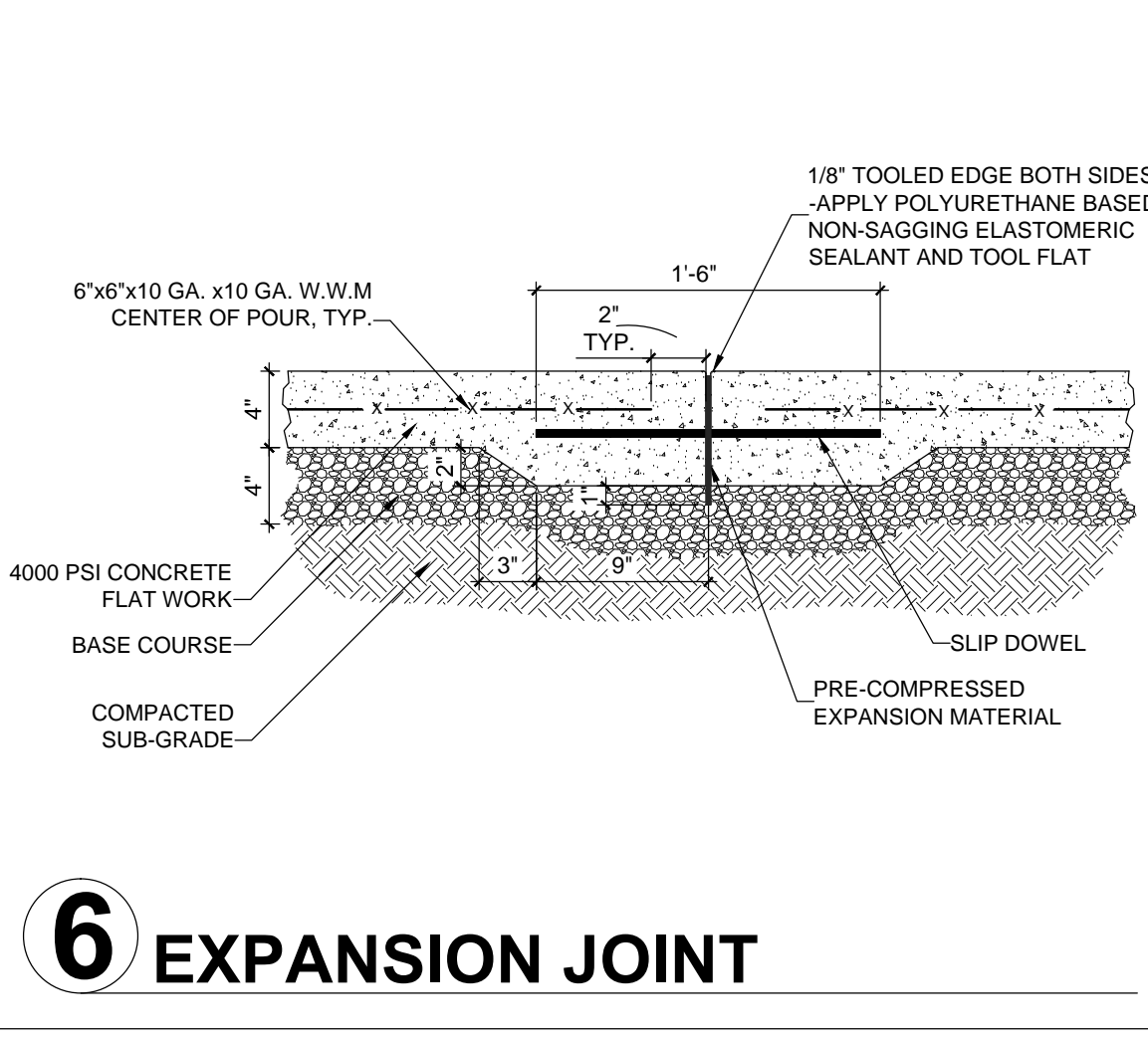
3 SLIP DOWEL



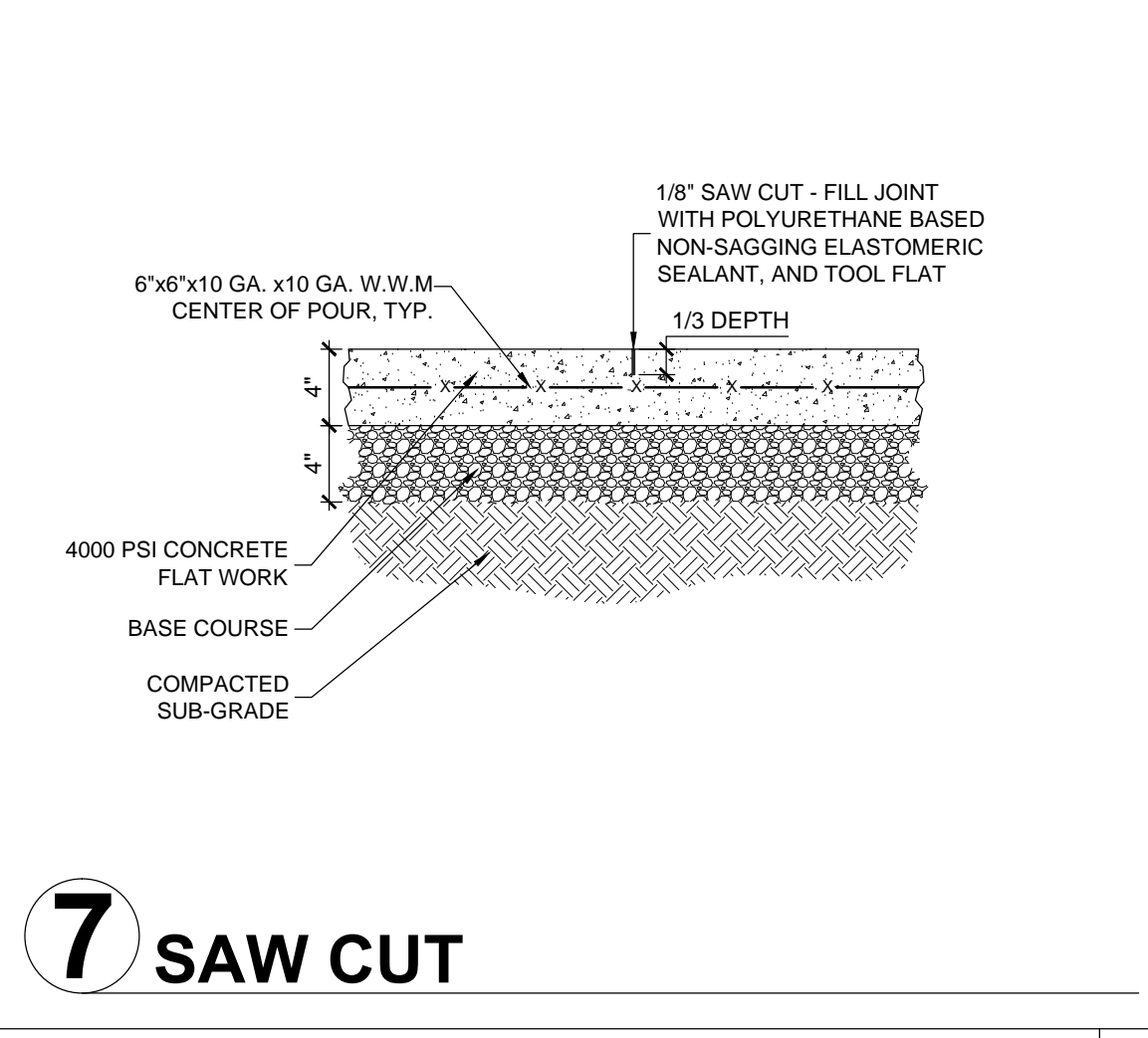
4 MONOLITHIC CONNECTION



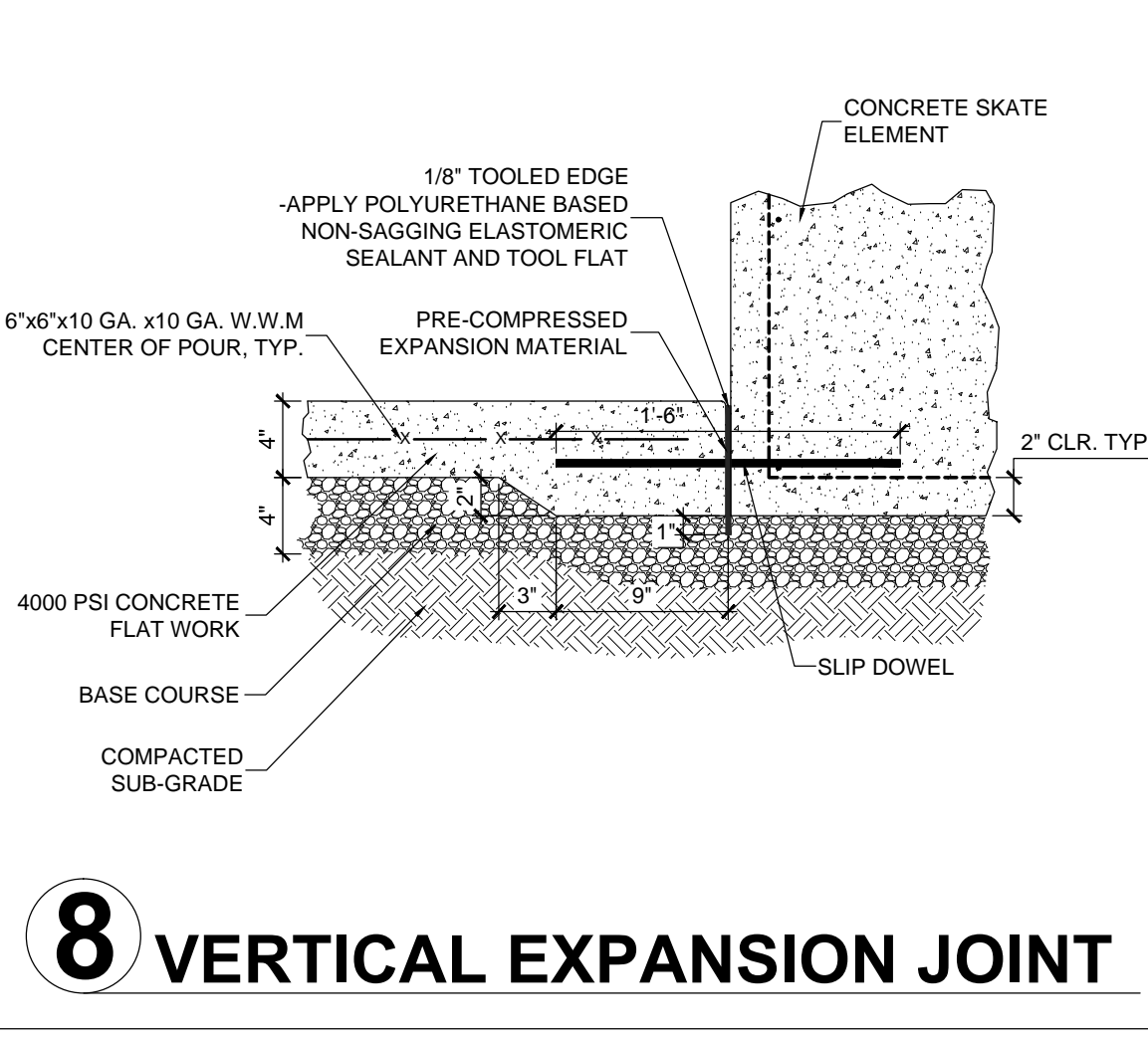
5 COLD JOINT



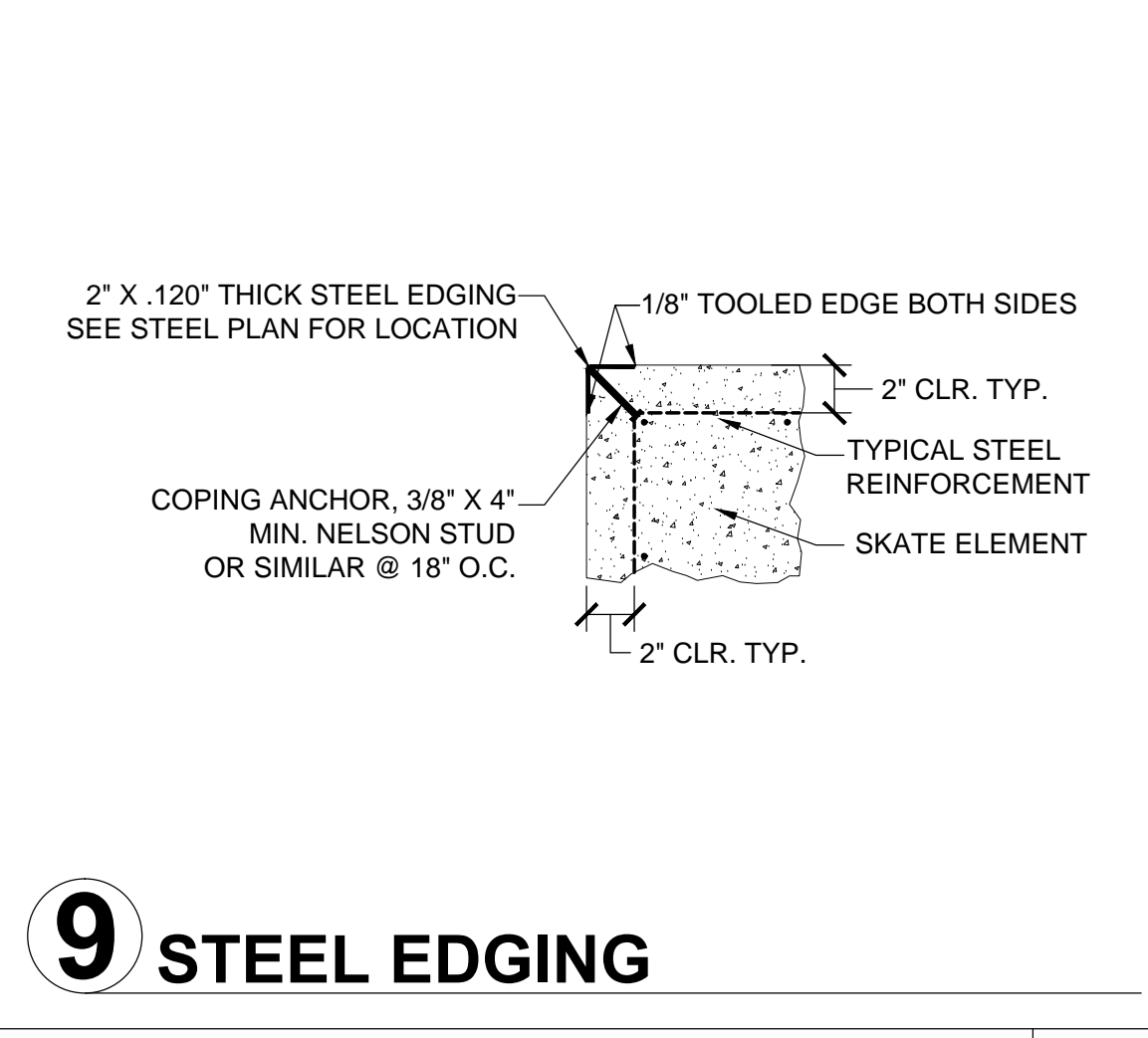
6 EXPANSION JOINT



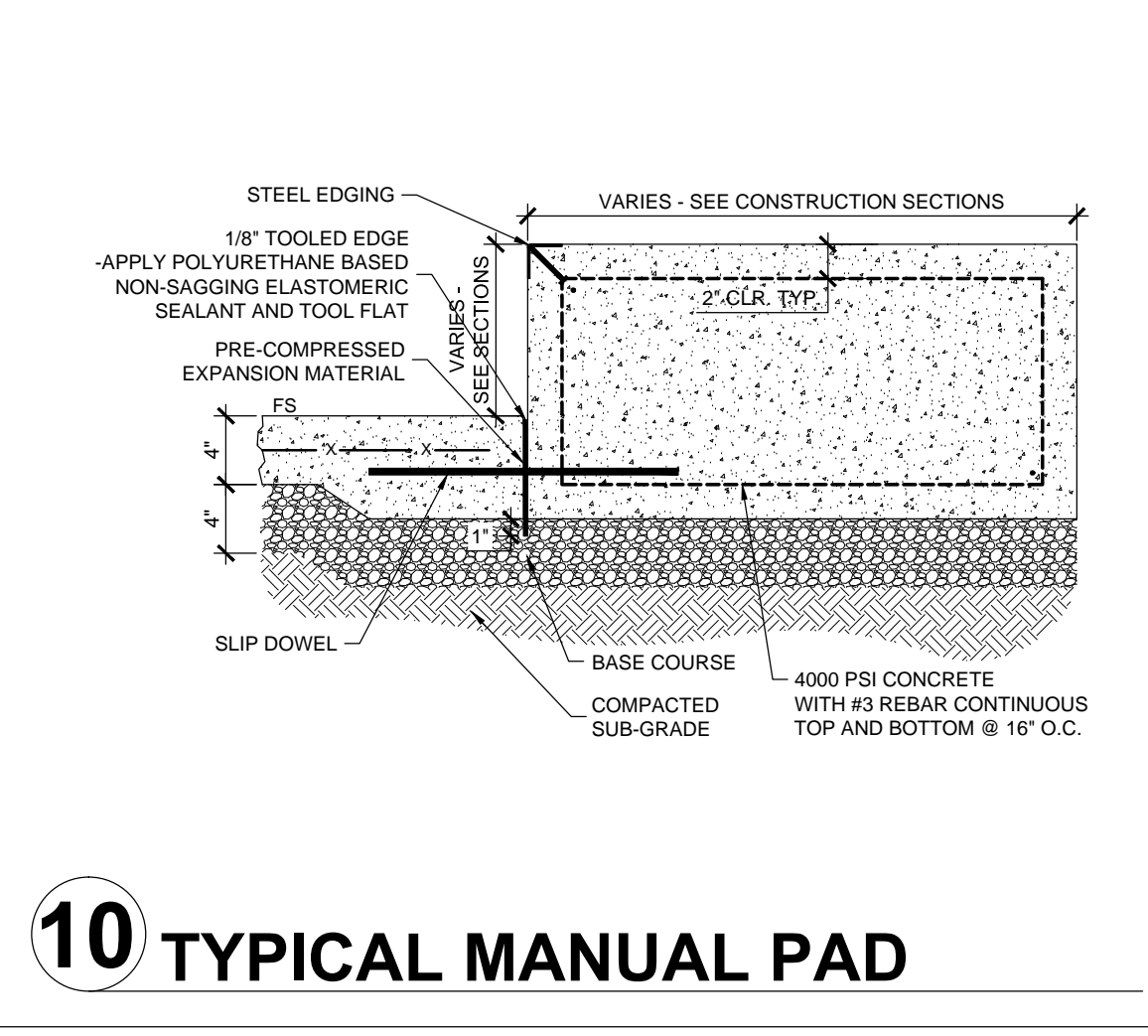
7 SAW CUT



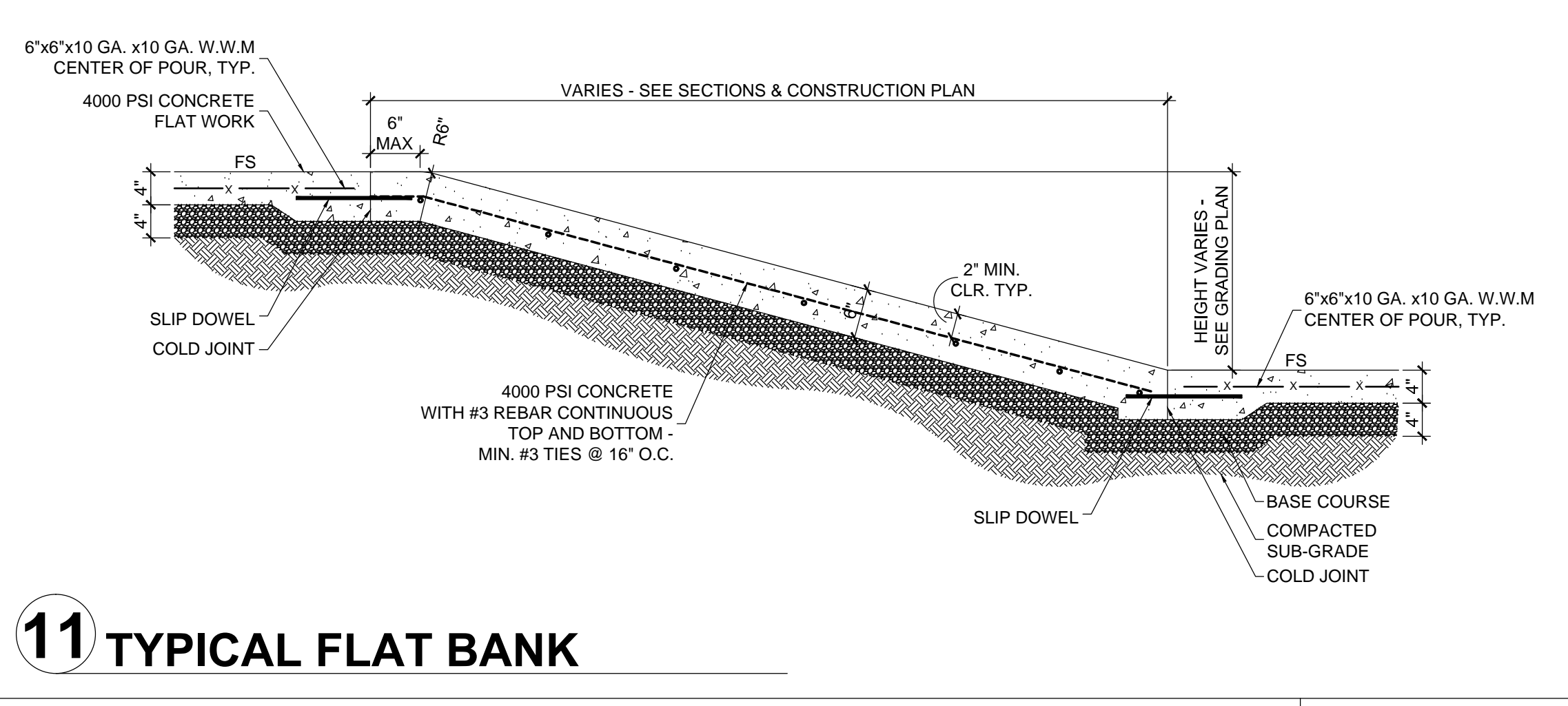
8 VERTICAL EXPANSION JOINT



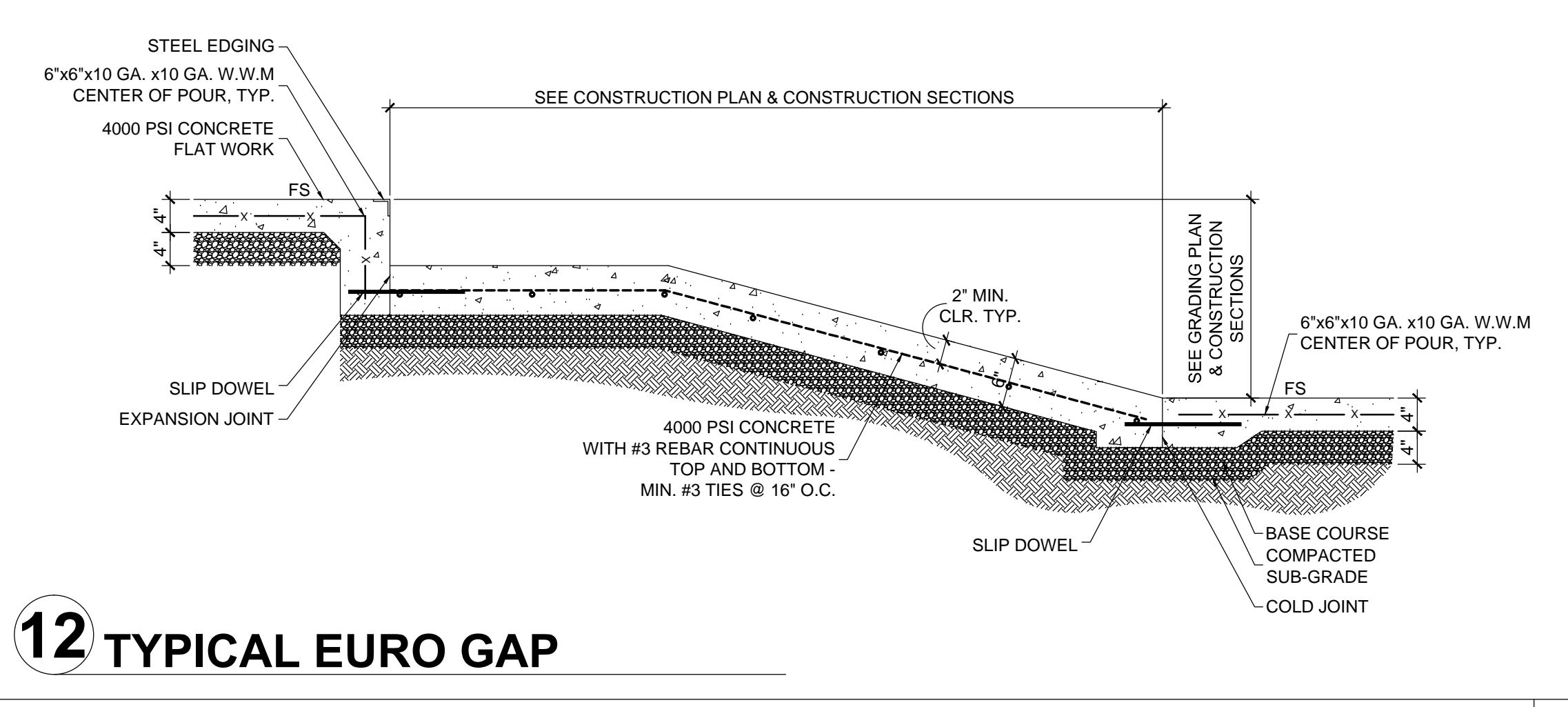
9 STEEL EDGING



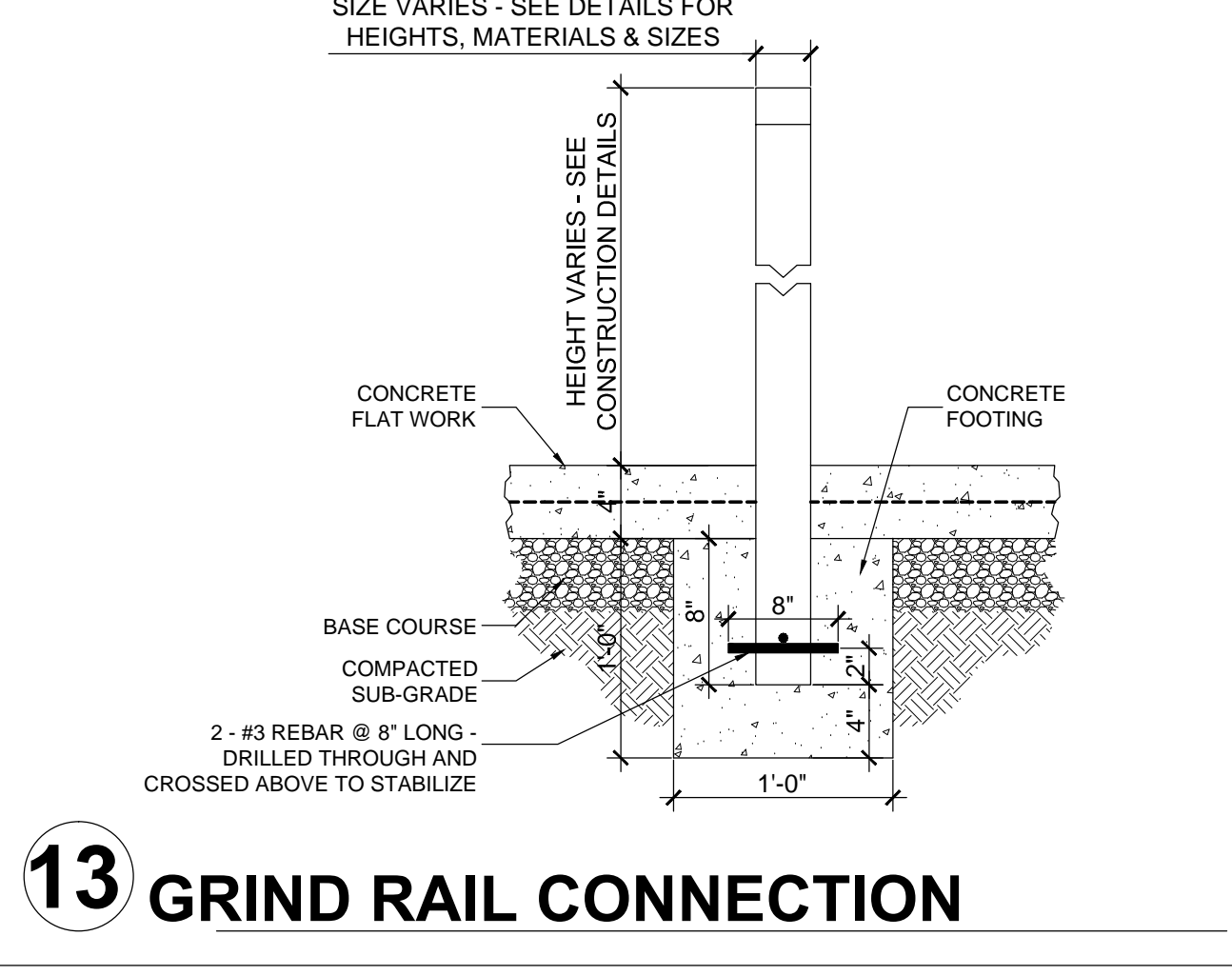
10 TYPICAL MANUAL PAD



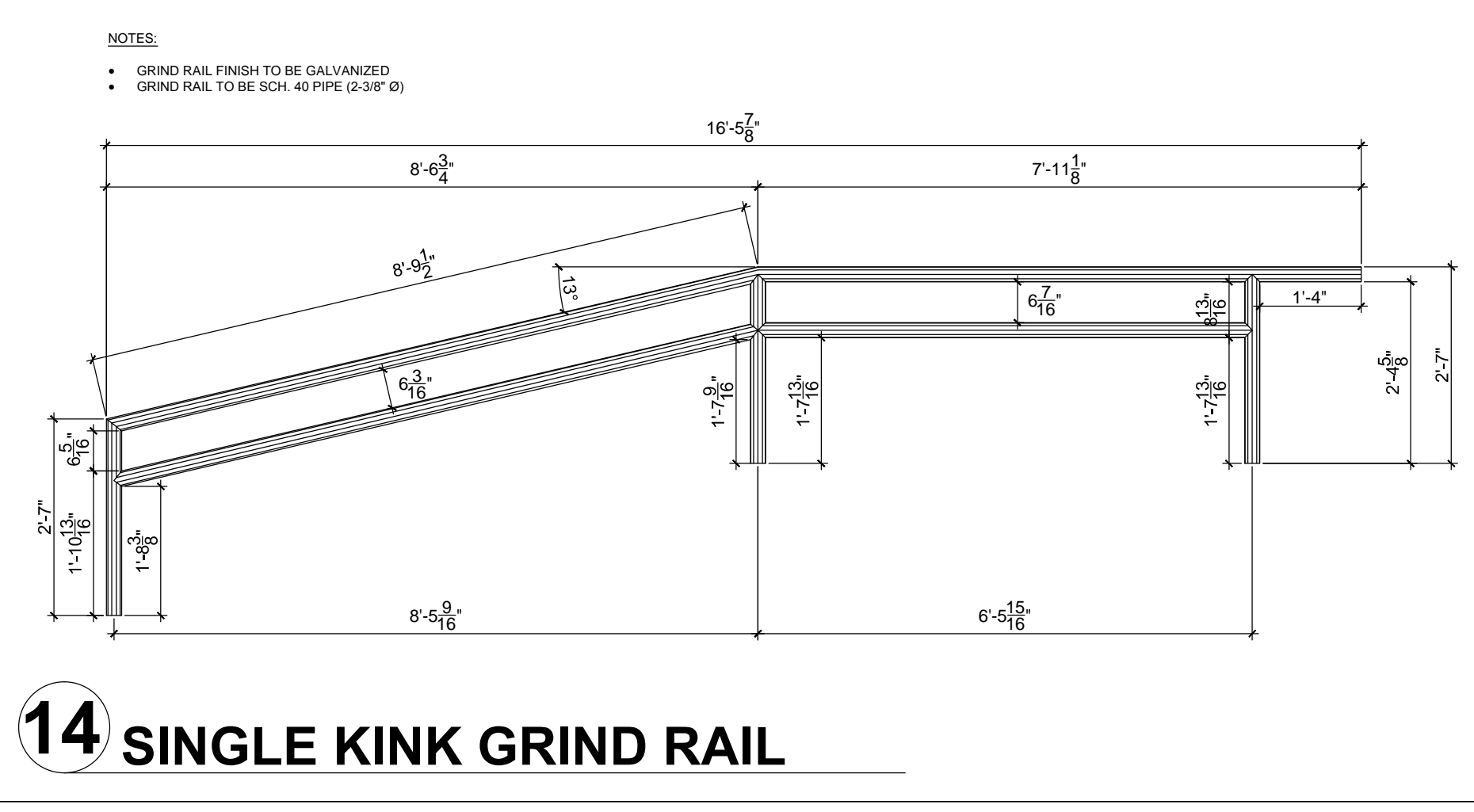
11 TYPICAL FLAT BANK



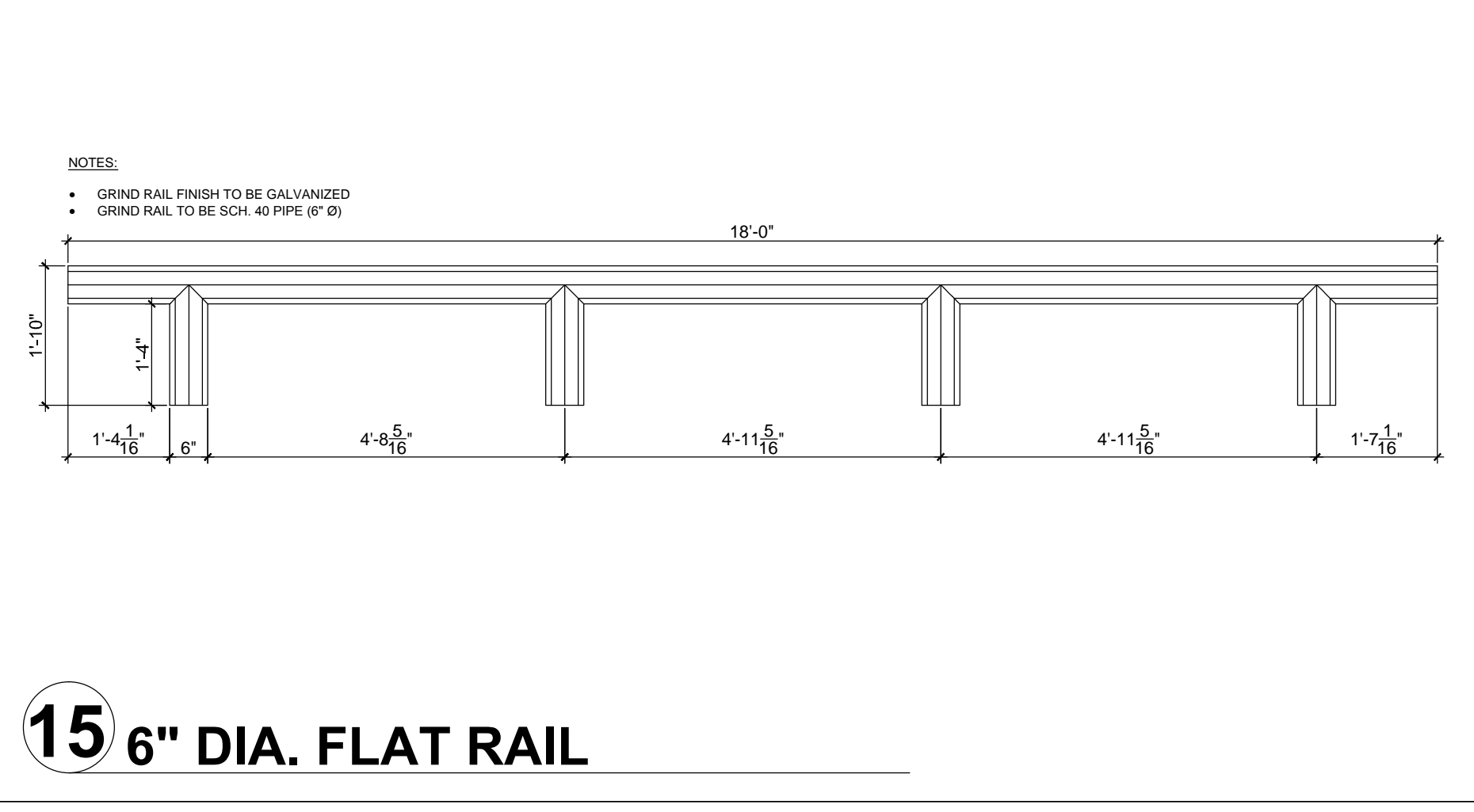
12 TYPICAL EURO GAP



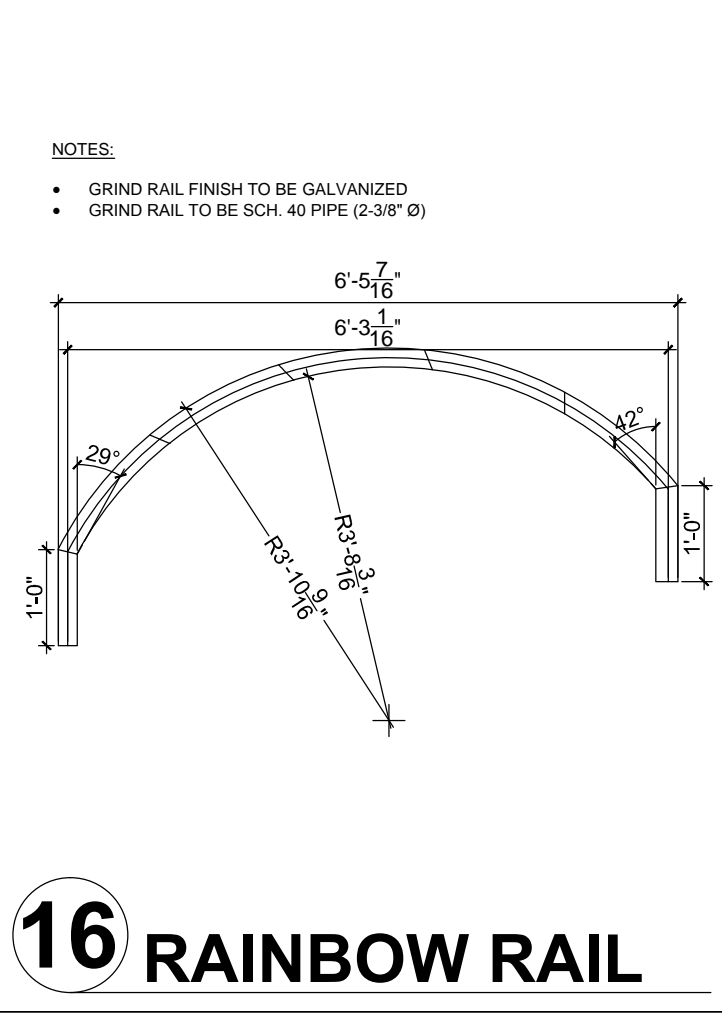
13 GRIND RAIL CONNECTION



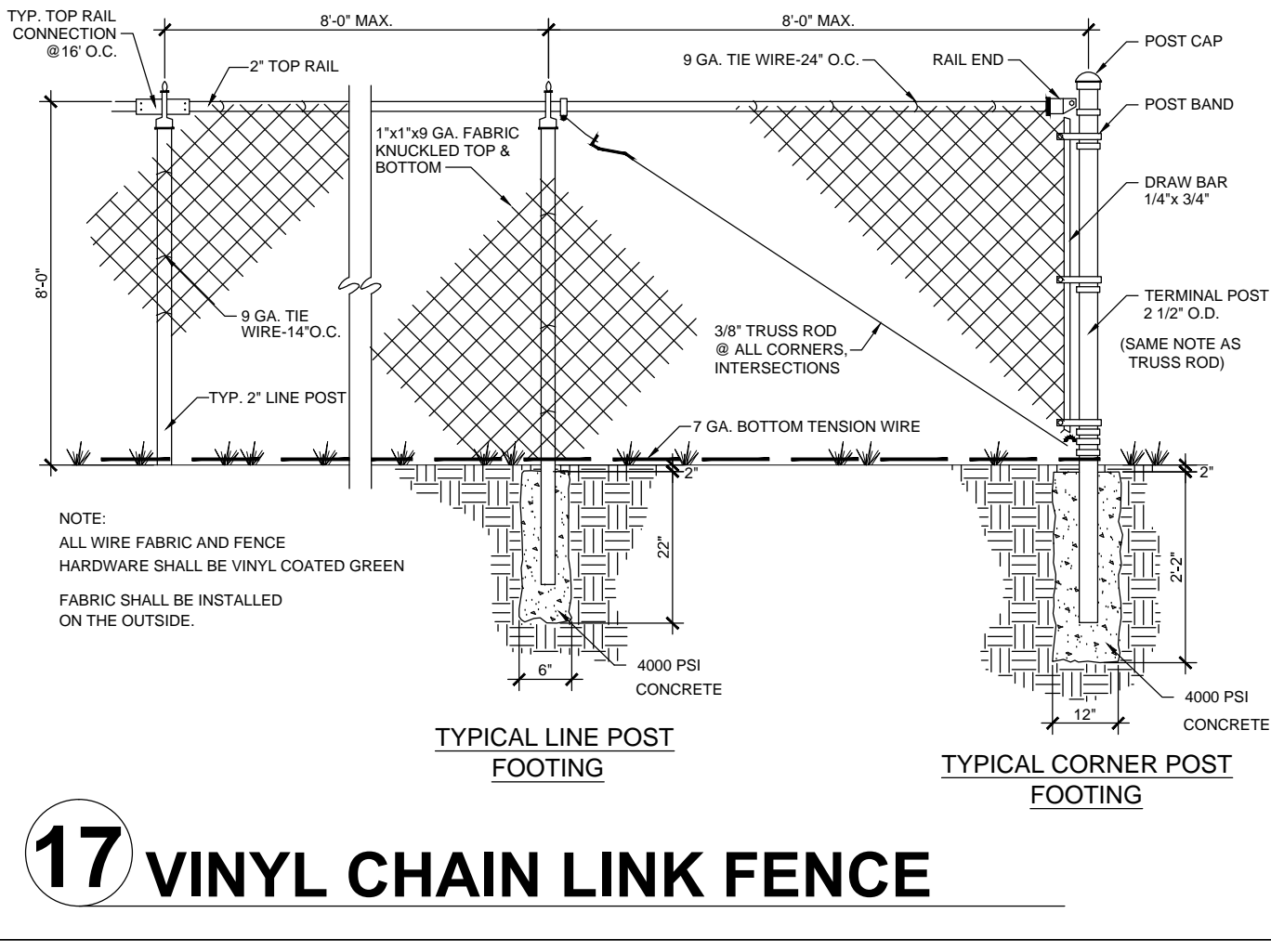
14 SINGLE KINK GRIND RAIL



15 6" DIA. FLAT RAIL



16 RAINBOW RAIL



17 VINYL CHAIN LINK FENCE

SPohn RAnCH SKATE PARKS
 PLANNING • DESIGN • CONSTRUCTION
 15131 CLARK AVE. • CITY OF INDUSTRY, CA 91745
 OFFICE (626) 330-5803
 FAX (626) 330-5803

NO.	DATE	REVISIONS

SKATE PARK DESIGNED BY: **DPS**
 DOCUMENTS BY: **SLR**
 PLAN CHECKED BY: **DCH**
 DATE: **2.23.12**

PROJECT TITLE: **FAIRFAX COUNTY, VA WAKEFIELD SKATE PARK**
 SHEET TITLE: **CONSTRUCTION DETAILS**

SHEET NO. **10**
 OF 10

The use of these plans shall be restricted to the original site for which they were prepared, and publication thereof is limited to that use. Reproduction, publication or use of these plans in whole or in part, without express written consent from Spohn Ranch, Inc. is prohibited. Title to these plans and concepts belongs to Spohn Ranch, Inc. without prejudice. Visual contact with or any other use of the plans shall be prohibited without the written consent of Spohn Ranch, Inc. Copyright © 2012 Spohn Ranch, Inc.