

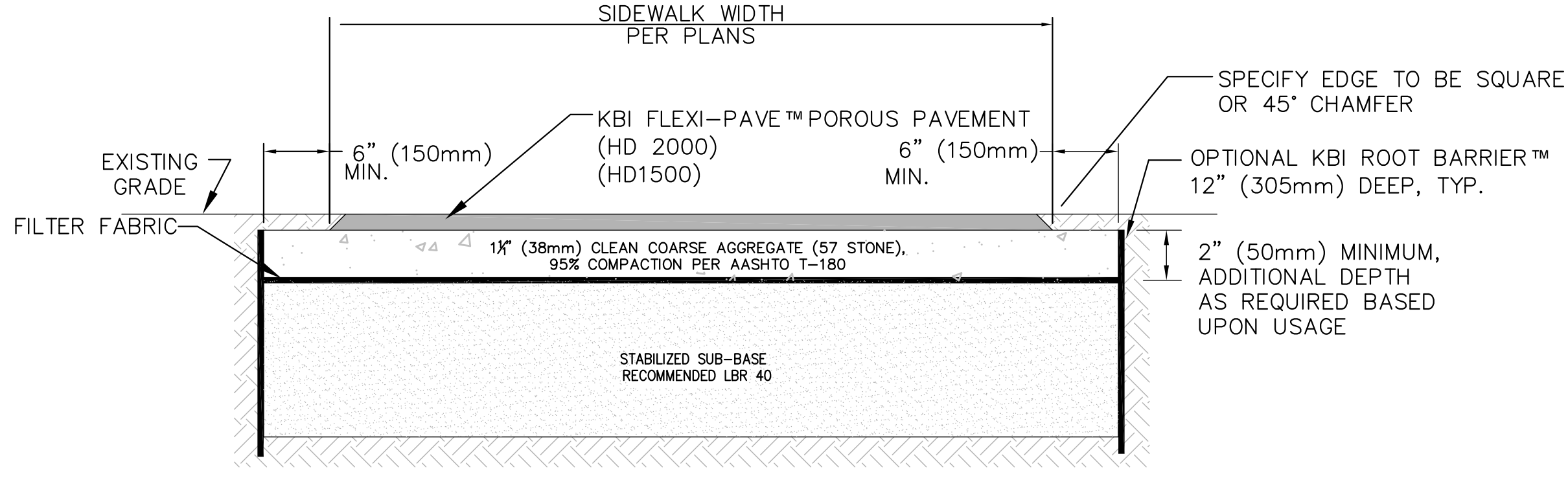
- NOTES:
- 1) BED PREPARATION SHOULD NOT EXCEED 2 INCHES.
  - 2) GRANULAR FILL SHOULD CONTAIN NO FINES.
  - 3) MINIMIZE WIDTH OF SIDEWALK AS ALLOWED BY CODE.
  - 4) TAKE EXTREME CARE OF EXISTING TREES' CRITICAL ROOT ZONES DURING CONSTRUCTION.

SOURCE: ADAPTED FROM STEVE CLARK & ASSOCIATES/ACRT, INC. MARYLAND STATE FOREST CONSERVATION MANUAL (modified for paving material)

Sidewalk above Critical Root Zone **Figure D-10**

NOTE: DETAIL APPLIES TO ALL AREAS WHERE PROPOSED SIDEWALK IS WITHIN THE CRITICAL ROOT ZONE OF EXISTING TREES.

**ASPHALT SIDEWALK ABOVE CRITICAL ROOT ZONE DETAIL**  
NOT TO SCALE

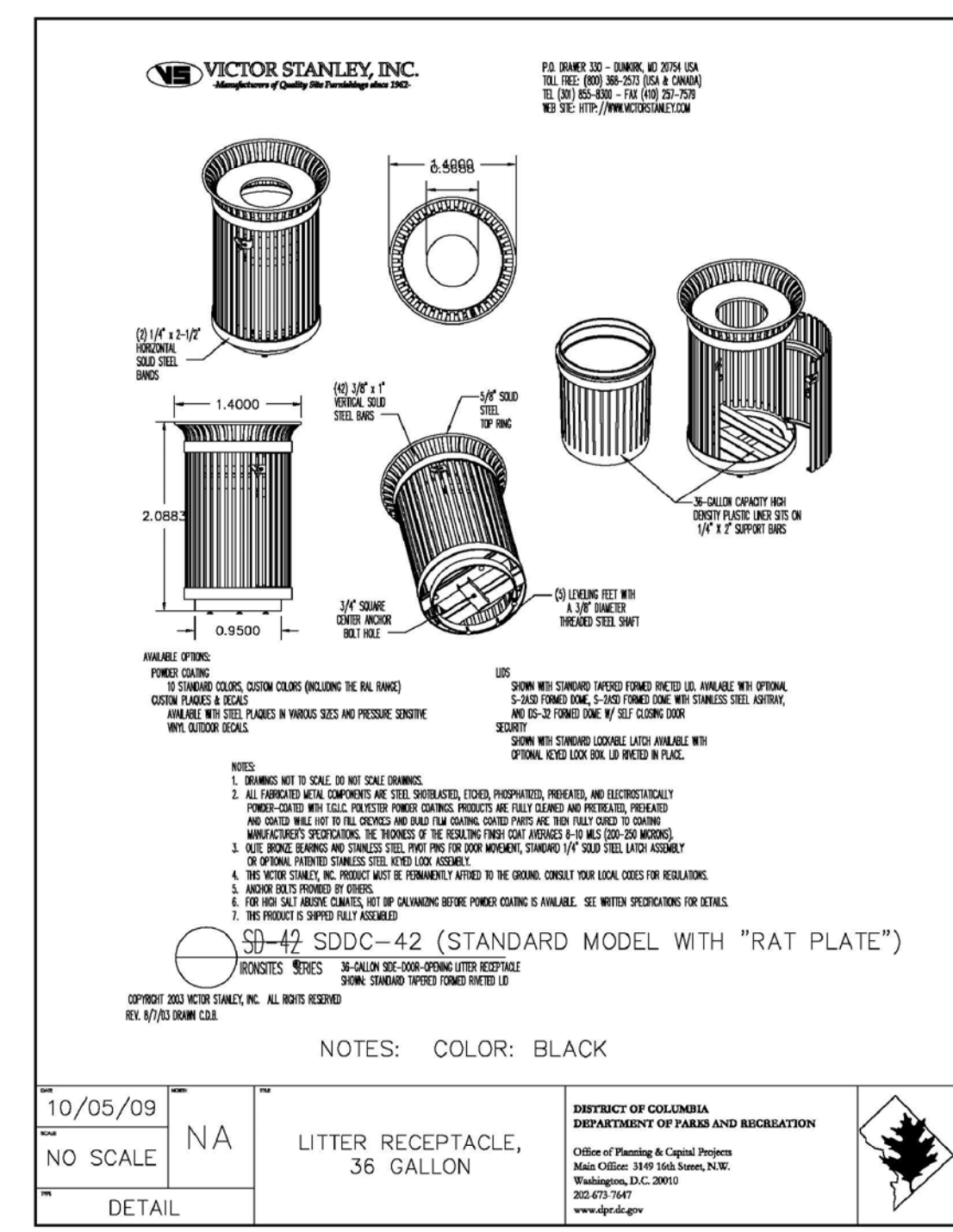


- NOTE:
- 1) FILTER FABRIC MUST HAVE PERMEABILITY GREATER THAN THE SOIL BELOW.
  - 2) SEE ASPHALT SIDEWALK ABOVE CRITICAL ROOT ZONE DETAIL THIS SHEET FOR SIDEWALK GRADING OVER CRITICAL ROOT ZONES OF EXISTING TREES.

**KBI FLEXI-PAVE™ SIDEWALK, NEW, NON LOAD BEARING, HIGHLY PERMEABLE**  
NOT TO SCALE

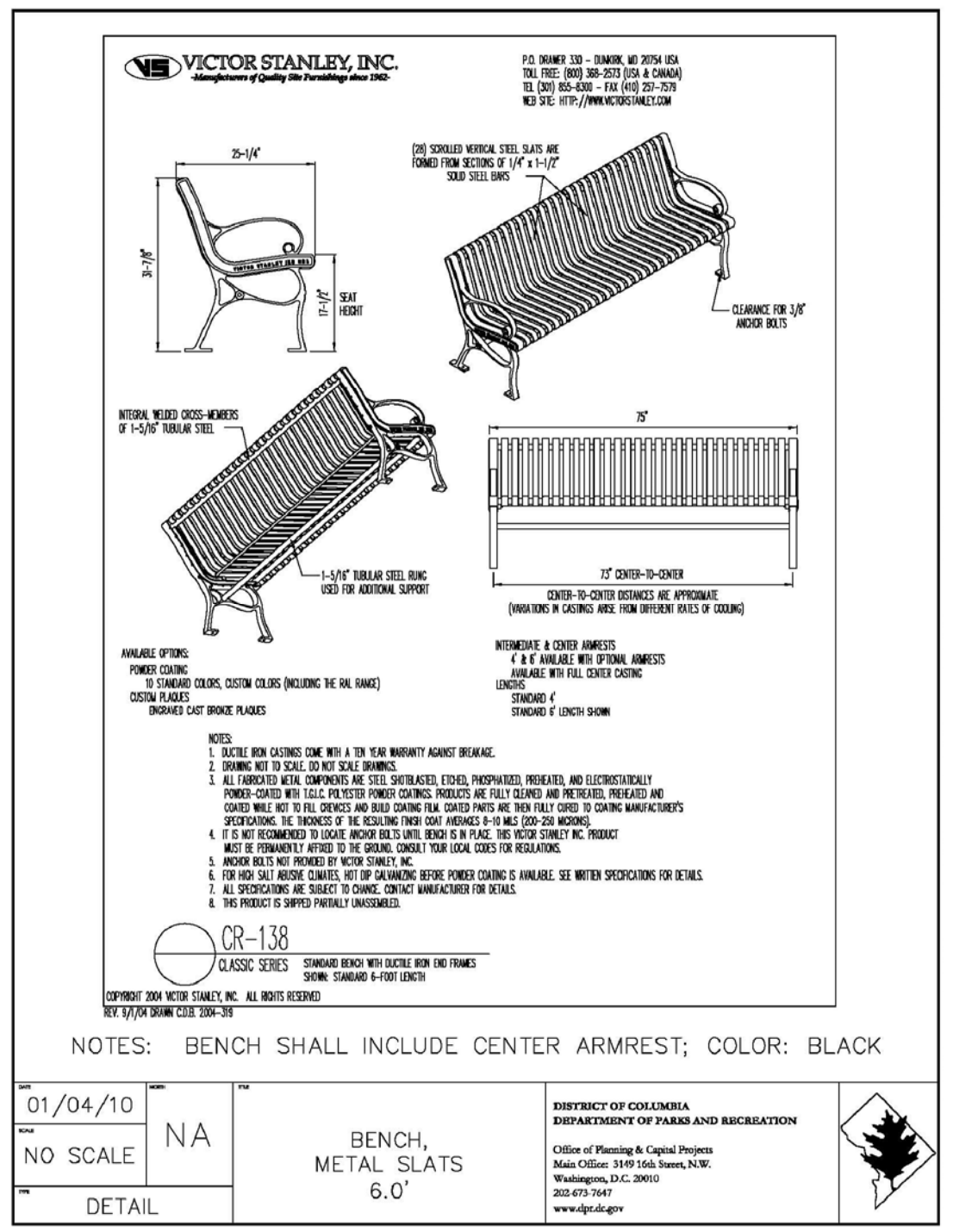
**FURNITURE & LIGHTING SCHEDULE**

Quantity	Furniture	Manufacturer	Style	Location	Remarks
12	Benches	Victor Stanley	CR-138	See plan	Or Approved Equal
4	Litter Receptacles	Victor Stanley	SDDC-42	See plan	Or Approved Equal
<b>Light Schedule: Total Pedestrian Lights = 9</b>					
Quantity	Lights	Manufacturer	Style	Location	Remarks
9	Luminaire	TBD	Washington Globe	See plan	Or Approved Equal
9	10' Poles	Hapco	Lincoln	See plan	Or Approved Equal



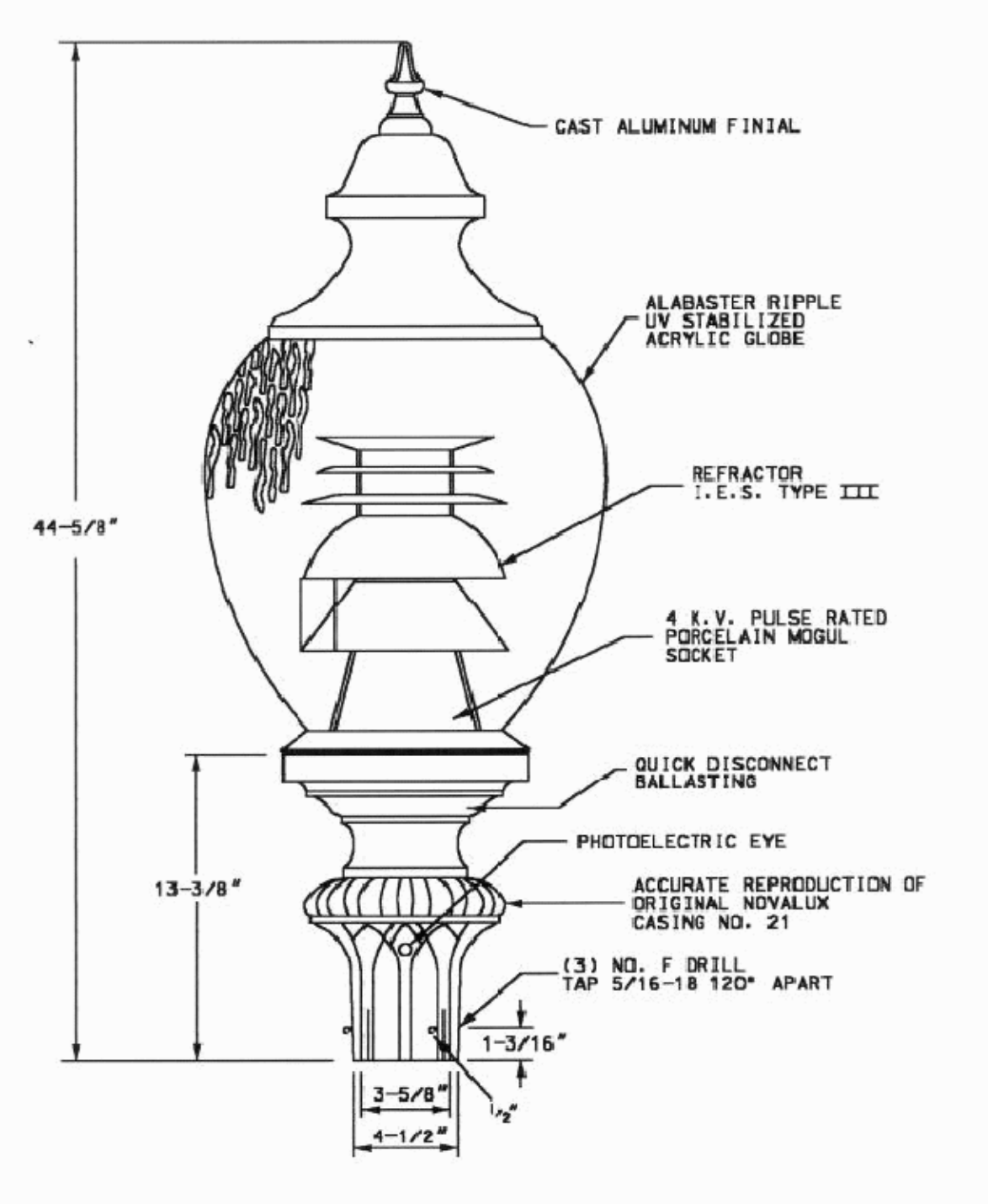
**LITTER RECEPTACLE DETAIL**  
NOT TO SCALE

OR APPROVED EQUAL  
MOUNTING: PER MANUFACTURER'S SPECIFICATION

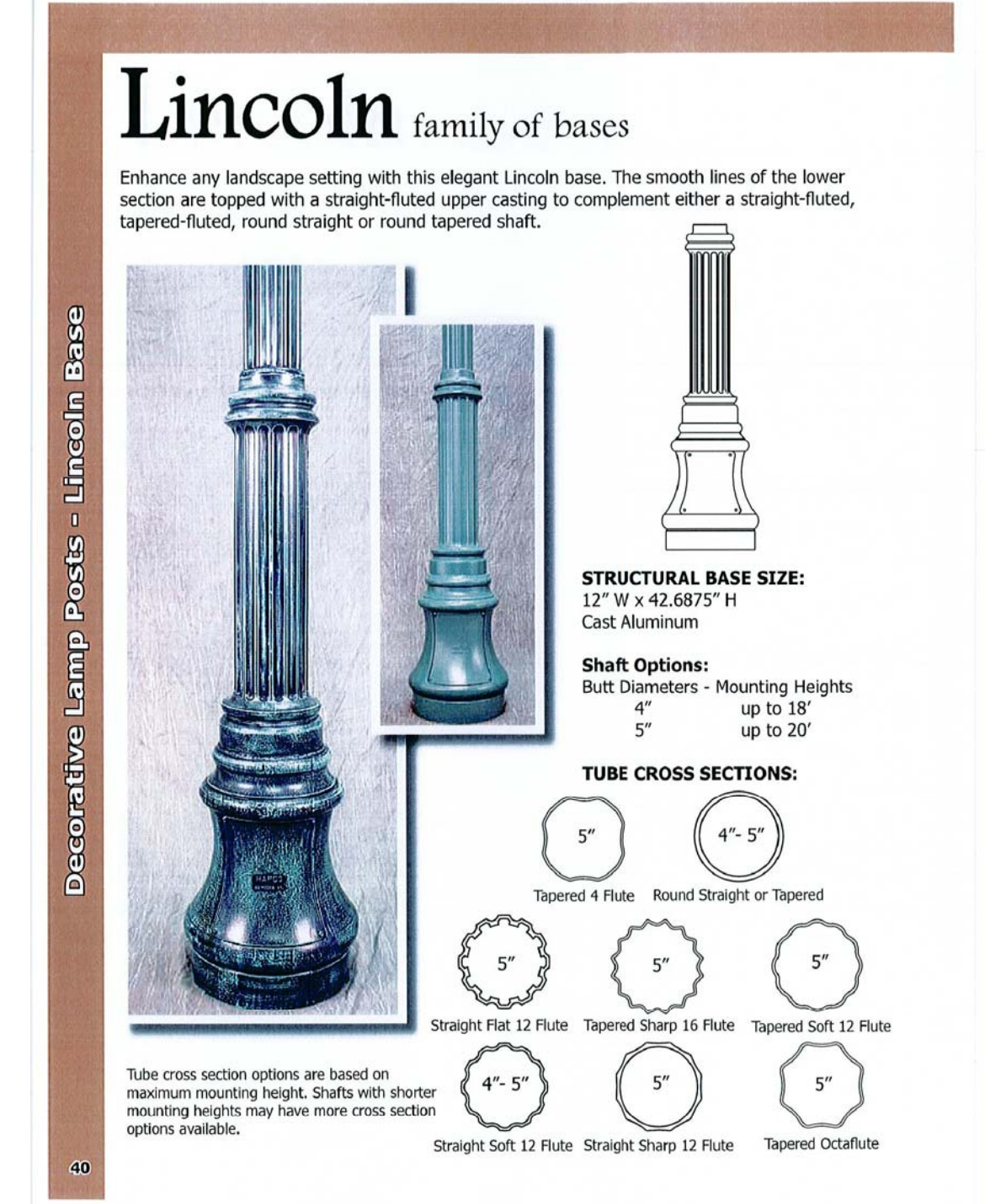


**BENCH DETAIL**  
NOT TO SCALE

OR APPROVED EQUAL  
COLOR: POWDERCOATED BLACK.  
MOUNTING: PER MANUFACTURER'S SPECIFICATION



**WASHINGTON GLOBE LUMINAIRE**  
NOT TO SCALE



**PEDESTRIAN LIGHT DETAIL**  
NOT TO SCALE

10' PEDESTRIAN LIGHT POLE  
HAPCO LIGHT POLE OR APPROVED EQUAL

