

IFB #617-12

Project Name and Location

**Ft Myer Heights
Playground
Reconstruction**

1400 N. Fort Myer Drive
Arlington, VA

Sheet Title

**Existing
Conditions &
Removals
Plan**

Approvals Date

D. W. Smith 2/27/12
Department Director
A. D. Smith 2/21/12
Park Development Division Chief
B. J. Smith 2/21/12
Design Unit Supervisor

Revisions Date

Revisions	Date
△	

Designed: AW
Drawn: AW
Checked: BG

Filename: Exist Cond & Removals.dwg
Plotted: May 09, 2012

Scale: AS_SHOWN
Date: DATE

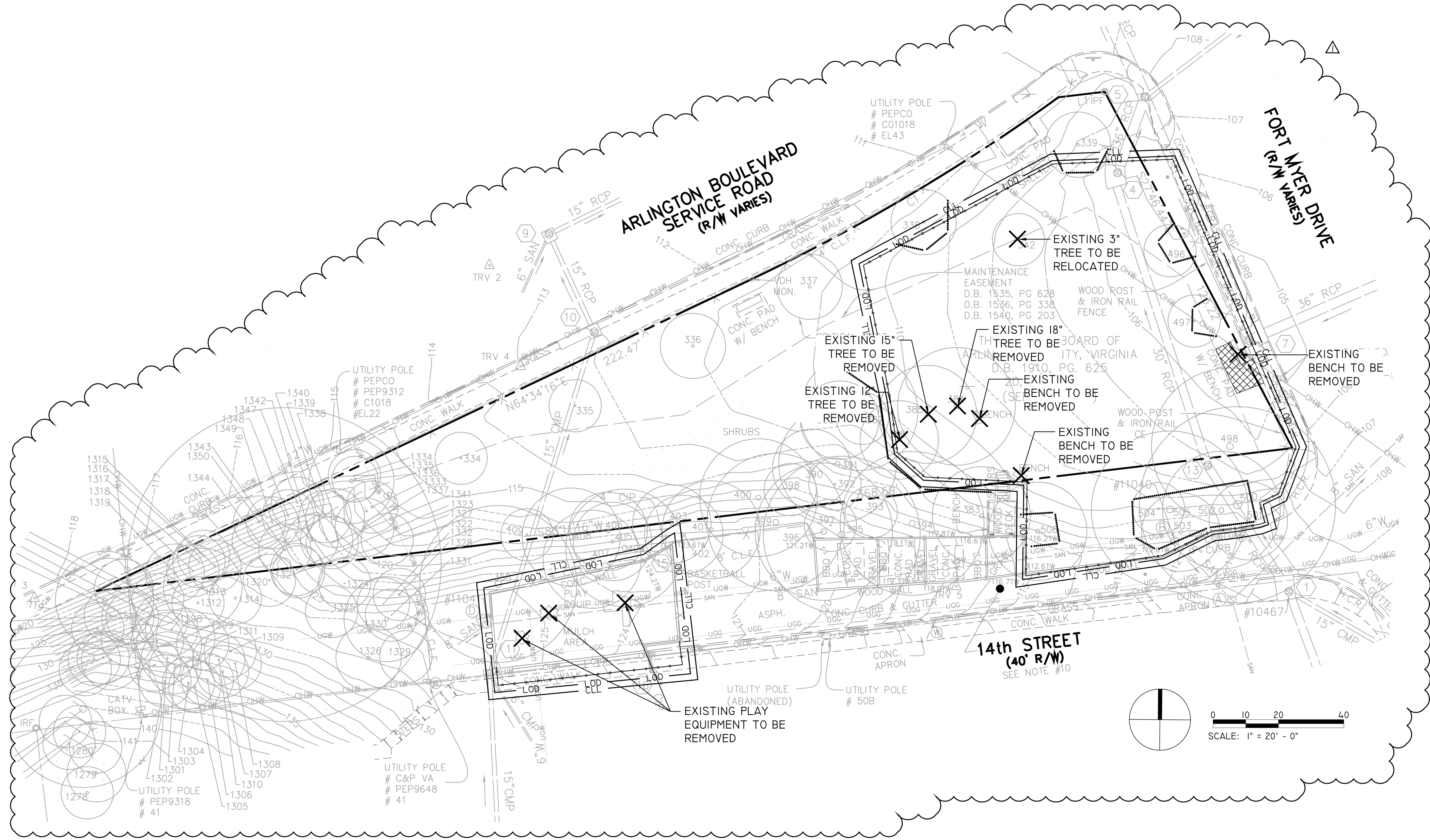
Seal

EXISTING CONDITIONS NOTES

1. THE PROPERTIES DELINEATED ON THIS PLAT ARE LOCATED ON ARLINGTON COUNTY ASSESSMENT MAP 044-15. REFERENCED AS RPC#17033020, 022, 023, 034, AND ARE ZONED S-3A.
2. BOUNDARY INFORMATION WAS COMPILED FROM EXISTING RECORD INFORMATION AND FOUND MONUMENTATION.
3. TOPOGRAPHIC INFORMATION SHOWN HEREON COMPILED FROM GROUND SURVEY BY RICE ASSOCIATES, DATED AUGUST 20, 2010.
4. THE CONTRACTOR SHALL CHECK AND VERIFY ALL DIMENSIONS, SPOT ELEVATIONS AND EXISTING CONDITIONS IN THE FIELD AND SHALL BE RESPONSIBLE FOR PERFORMING THE WORK IN ACCORDANCE WITH SAME. ANY DISCREPANCIES IN CONTRACT DOCUMENTS AND FIELD CONDITIONS SHALL BE BROUGHT TO THE ATTENTION OF THE PROJECT OFFICER OR CORRECTED AT CONTRACTOR'S EXPENSE.

REMOVAL NOTES

1. TREE PRESERVATION FENCING SHALL BE INSTALLED PRIOR TO CONSTRUCTION AND SHALL REMAIN IN PLACE THROUGHOUT CONSTRUCTION OPERATIONS.
2. CONTRACTOR SHALL COORDINATE WITH RESPECTIVE UTILITY COMPANIES FOR SHUTOFF, CAPPING, AND CONTINUATION OF UTILITY SERVICES AS REQUIRED.
3. THE CONTRACTOR SHALL CONTACT MISS UTILITY AT 811 IN VA OR 1-800-552-7001. A MINIMUM OF 72 HOURS PRIOR TO ANY EXCAVATION, TO DETERMINE THE EXACT LOCATION OF ALL EXISTING UTILITIES, AND SHALL BE FULLY RESPONSIBLE FOR ANY AND ALL DAMAGES WHICH MAY BE OCCASIONED BY THE CONTRACTOR'S FAILURE TO EXACTLY LOCATE AND PRESERVE ANY AND ALL EXISTING UTILITIES.
4. ANY STOCKPILING, REGARDLESS OF LOCATION ON SITE SHALL BE STABILIZED IMMEDIATELY AFTER ITS ESTABLISHMENT AND FOR THE DURATION OF THE PROJECT. STOCKPILES SHALL BE CONTAINED BY STRAW BALES OR EROSION CONTROL FENCING AND COVERED WITH PLASTIC OR CANVAS AT THE END OF EACH WORK DAY FOR THE DURATION OF THE PROJECT.
5. TEMPORARY CONSTRUCTION FENCING SHALL BE ERECTED AS SHOWN ON THE PLANS PRIOR TO BEGINNING CONSTRUCTION OPERATIONS AND MAINTAINED UNTIL COMPLETION OF CONSTRUCTION.
6. CONTRACTOR SHALL COMPLETELY AND LEGALLY REMOVE FROM SITE ALL OF EXISTING TURF NECESSARY FOR DEVELOPMENT.
7. CONTRACTOR SHALL COMPLETELY AND LEGALLY REMOVE FROM SITE EXISTING CONCRETE PAD AS SHOWN ON PLANS. THE CONTRACTOR SHALL ENSURE THAT ALL SAW CUTTING OF PAVEMENTS AND SIDEWALKS SHALL BE DONE NEAT AND ACCURATELY.
8. CONTRACTOR SHALL COMPLETELY AND LEGALLY REMOVE EXISTING PLAY EQUIPMENT AND SITE FURNISHINGS AS INDICATED ON THE PLANS.
9. CONTRACTOR SHALL REMOVE ALL MISC. DEBRIS (I.E. CONCRETE FORMS, BRICK PAVERS, ETC.) THAT ARE NOT REPRESENTED IN THE PLANS.
10. THE TEMPORARY CONSTRUCTION ENTRANCE SHALL BE MAINTAINED IN A CONDITION WHICH WILL PREVENT TRACKING OF SEDIMENT ONTO PUBLIC RIGHTS-OF-WAY OR STREETS. ALL SEDIMENT SPILLED, DROPPED, OR WASHED ONTO PUBLIC RIGHTS-OF-WAY MUST BE REMOVED IMMEDIATELY. WHEN NECESSARY, WHEELS MUST BE CLEANED TO REMOVE SEDIMENT PRIOR TO ENTERING ONTO PUBLIC RIGHTS-OF-WAY. WHEN WASHING IS REQUIRED, IT SHALL BE DONE ON AN AREA STABILIZED WITH AGGREGATE, WHICH DRAINS INTO AN APPROVED SEDIMENT-TRAPPING DEVICE. ALL SEDIMENT SHALL BE PREVENTED FROM ENTERING STORM DRAINS, DITCHES, OR WATERCOURSES.
11. UPON COMPLETION OF THE PROJECT, ALL EXCESS SOIL, TEMPORARY FENCING, EROSION CONTROL MEASURES, STABILIZATION MATERIALS, AND OTHER DEBRIS SHALL BE REMOVED FROM THE SITE AND DISPOSED OF LEGALLY. ALL PAVED AREAS, WALLS, ETC. SHALL BE THOROUGHLY WASHED AND CLEANED UPON COMPLETION OF THE PROJECT
12. CONTRACTOR IS RESPONSIBLE FOR MATERIAL ENCOUNTERED TO PROJECT SUBGRADE. UNDERCUT OF UNSUITABLE SUBGRADE TO BE DONE ACCORDING TO UNIT PRICING.



ABBREVIATION LEGEND

HCR	HANDICAP RAMP
CONC.	CONCRETE
CIP	CAST IRON PIPE
CMP	CORRUGATED METAL PIPE
RCP	REINFORCED CONCRETE PIPE
C.L.F.	CHAIN LINK FENCE
EQUIP.	EQUIPMENT
CATV	CABLE TELEVISION
ASPH.	ASPHALT
TYP.	TYPICAL
BBQ.	BARBEQUE GRILL
IPF	IRON PIPE FOUND
IRF	REBAR FOUND
VDH	VA. DEPARTMENT OF HIGHWAYS
MON.	MONUMENT
TW	TOP OF WALL

SYMBOL / LINE LEGEND

⊕	WATER MANHOLE
⊙	UTILITY POLE
⊕	SIGN
⊕	STORM SEWER MANHOLE
⊕	PARKING METER
—	FENCE
⊕	BOLLARD
⊕	POST
⊕	HYDRANT
⊕	SIGN
⊕	CONTROL STATION
—OHW—	OVERHEAD WIRES
⊕	TREE LINE
⊕	SANITARY MANHOLE
—SAN—	SANITARY LINE
—UGG—	GAS LINE
—UGW—	WATER LINE
⊕	WATER VALVE

LEGEND

SYMBOL	ITEM	REMARKS
	EXISTING PAVEMENT TO BE REMOVED	REMOVE FULL DEPTH AND DISPOSE OF OFF SITE
	ITEM TO BE REMOVED	ITEMS SHALL BE COMPLETELY REMOVED, INCLUDING ALL FOOTINGS OR STUMPS
.....	TREE PROTECTION FENCING - REFER TO DETAIL 3, SHEET LI2.0	FINAL LOCATIONS SHALL BE AS APPROVED BY THE PROJECT OFFICER.
— LOD —	LIMITS OF DISTURBANCE	FINAL LOCATIONS SHALL BE AS APPROVED BY THE PROJECT OFFICER.
— CLL —	CONTRACT LIMIT LINE	
—	CONSTRUCTION FENCE	FINAL LOCATION(S) REQUIRE APPROVAL.
— x —	SILT FENCE - REFER TO E&S PLAN AND DETAIL 4, SHEET LI2.0	FINAL LOCATIONS SHALL BE AS APPROVED BY THE PROJECT OFFICER.
---	PROPERTY LINE	