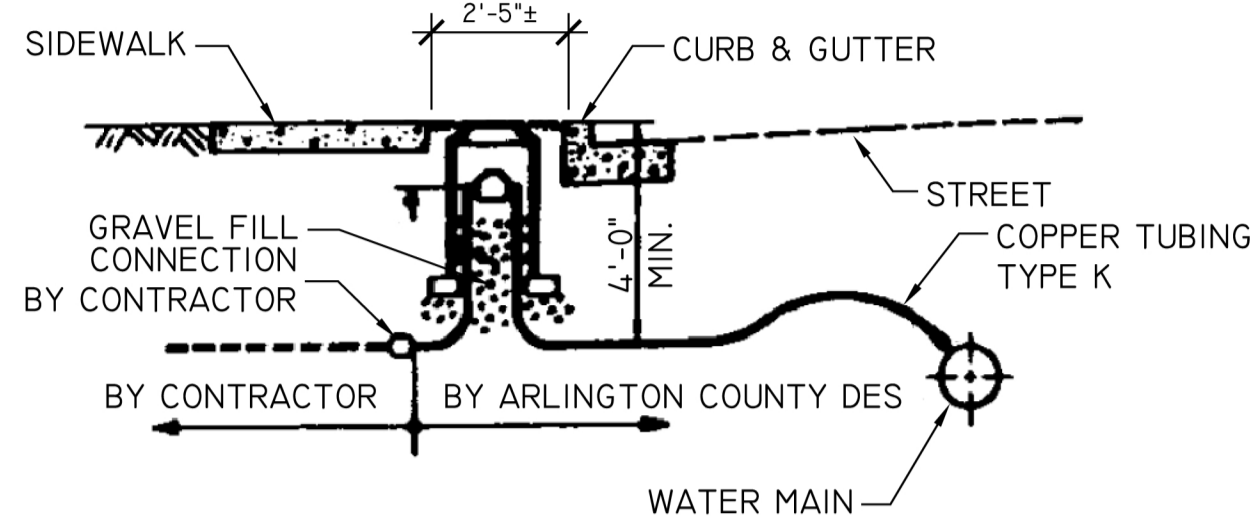


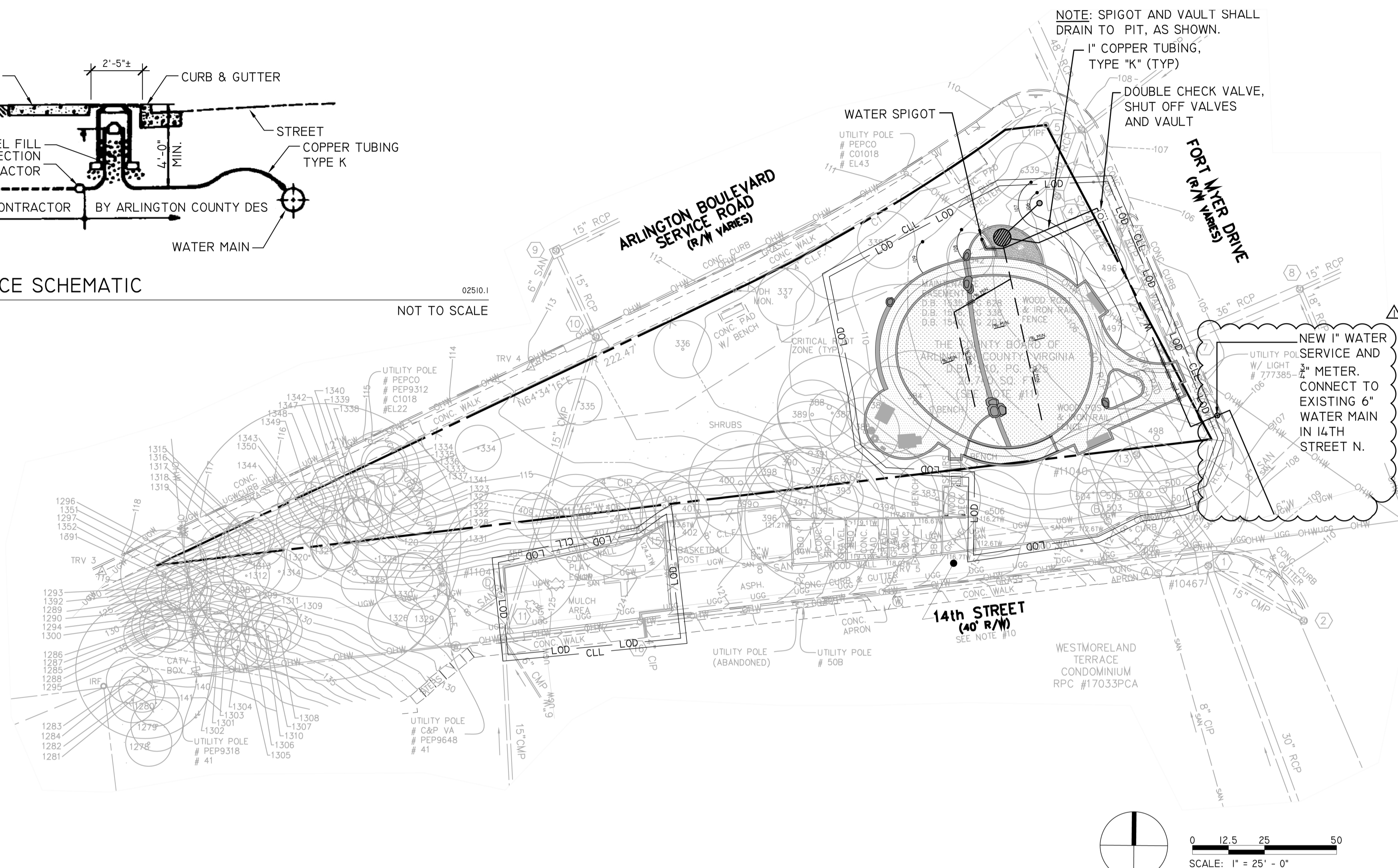
NOTE:

- SEE ARLINGTON CO. CONSTRUCTION STANDARDS AND SPECIFICATIONS, DRAWING # W-8.0 (UPDATED JAN. 25, 2008) FOR MORE INFORMATION.
- REFER TO THE INSTALLATION DRAWING FOR EQUIPMENT VAULT MANIFOLD SYSTEM FOR SPECIFIC INSTALLATION DETAILS.
- WATER DISTRIBUTION SYSTEM CONFIGURATION IS CONCEPTUAL AND REQUIRES APPROVAL PRIOR TO INSTALLATION.
- ALL PIPING TO FEATURES SHALL HAVE A 1-2% SLOPE FOR WINTERIZATION.
- FINAL LOCATION LINE ROUTING IS TO BE DETERMINED BY CONTRACTOR AND APPROVED BY PROJECT OFFICER.
- WATER METER ON THE COUNTY WATER MAIN SHALL BE PROVIDED BY ARLINGTON COUNTY.
- DOUBLE CHECK VALVE SHALL BE INSTALLED WITHIN THE VAULT AND SIDEWALL PUNCHED FOR WATER SUPPLY LINE TO EXIT TO WATER SPIGOT, AS APPROVED BY PROJECT OFFICER AND ARLINGTON COUNTY CODE.



1 WATER SERVICE SCHEMATIC

L6.0 SECTION NOT TO SCALE

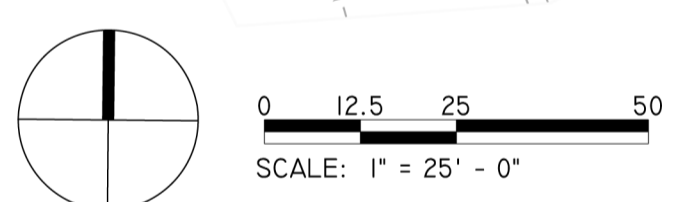


NOTE: SPIGOT AND VAULT SHALL DRAIN TO PIT, AS SHOWN.

1" COPPER TUBING, TYPE "K" (TYP)

DOUBLE CHECK VALVE, SHUT OFF VALVES AND VAULT

NEW 1" WATER SERVICE AND 3/4" METER. CONNECT TO EXISTING 6" WATER MAIN IN 14TH STREET N.



UTILITIES LEGEND:

- 108 --- EXISTING CONTOUR
- 108 --- PROPOSED CONTOUR
- LOD --- LIMITS OF DISTURBANCE
- CL --- CONTRACT LIMIT LINE
- --- PROPERTY LINE



DETAIL # SHEET #



SYNTHETIC TURF SAFETY SURFACING



PERVIOUS PAVEMENT



PLAY SAND

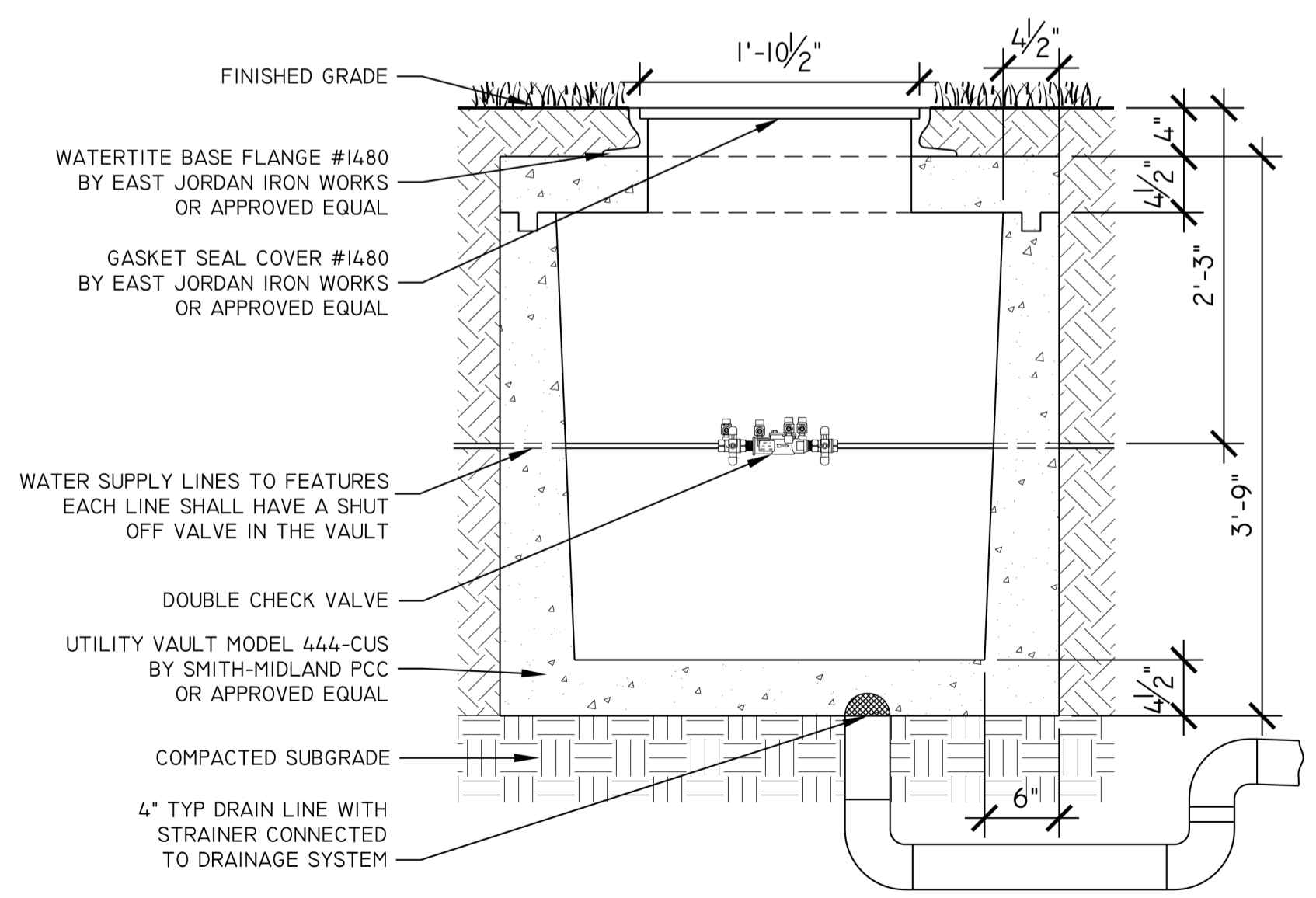
- 20 LI2.2
- 6 LI2.0
- 13 LI2.1

UTILITIES NOTES:

- CONTRACTOR SHALL CONTACT MISS UTILITY FOR THE MARKING OF EXISTING UNDERGROUND UTILITIES AT LEAST 48 HOURS PRIOR TO ANY EXCAVATION OR CONSTRUCTION. IN ADDITION, CONTRACTOR SHALL BE RESPONSIBLE FOR LOCATING ANY SEWER LATERALS NOT PROVIDED BY MISS UTILITY, FOR INCORPORATION OF THE WATER SPIGOT DRAINLINE.
- NEW WORK SHALL MEET AND MATCH EXISTING ALIGNMENT OF FEATURES AND FINISHED GRADES AT EXISTING PAVEMENT AND OTHER FACILITIES TO REMAIN. THE CONTRACTOR SHALL MAKE ANY NECESSARY ADJUSTMENTS IN THE PROPOSED WORK TO MEET THE INTENT OF THE PLANS AND TO PROVIDE SMOOTH TRANSITIONS BETWEEN EXISTING CONDITIONS AND NEW WORK.
- LOCATIONS OF PROPOSED WATER SUPPLY LINES ARE APPROXIMATE. FINAL LOCATIONS SHALL BE DETERMINED BY A LICENSED PLUMBER IN COORDINATION WITH PROJECT OFFICER.
- UNDERGROUND UTILITY LINES SHALL BE ROUTED TO MINIMIZE EXCAVATION AND CUTTING OF TREE ROOTS. WHERE SIGNIFICANT TREE ROOTS WOULD BE DAMAGED DUE TO EXCAVATION, CONTRACTOR SHALL DIRECT BORE FOR THE INSTALLATION OF UTILITIES.
- TREE PROTECTION FENCING SHALL BE INSTALLED FOR ALL EXISTING TREES TO REMAIN PRIOR TO CONSTRUCTION AND SHALL REMAIN IN PLACE THROUGHOUT CONSTRUCTION OPERATIONS.
- TEST ALL NEW UTILITY AND SITE DRAINAGE SYSTEMS IN THE PRESENCE OF THE PROJECT OFFICER PRIOR TO THE INSTALLATION OF BACKFILL MATERIAL.
- FOR ALL CONDITIONS WHERE COMPACTED SUBGRADE IS SPECIFIED, PLACE FILL IN SIX INCH LAYERS MAXIMUM AND COMPACT TO 95%.
- UPON COMPLETION OF WORK REMOVE ALL EXCESS SOIL, MATERIALS, DEBRIS AND EQUIPMENT FROM SITE. DISPOSE OF EXCESS MATERIALS LEGALLY.

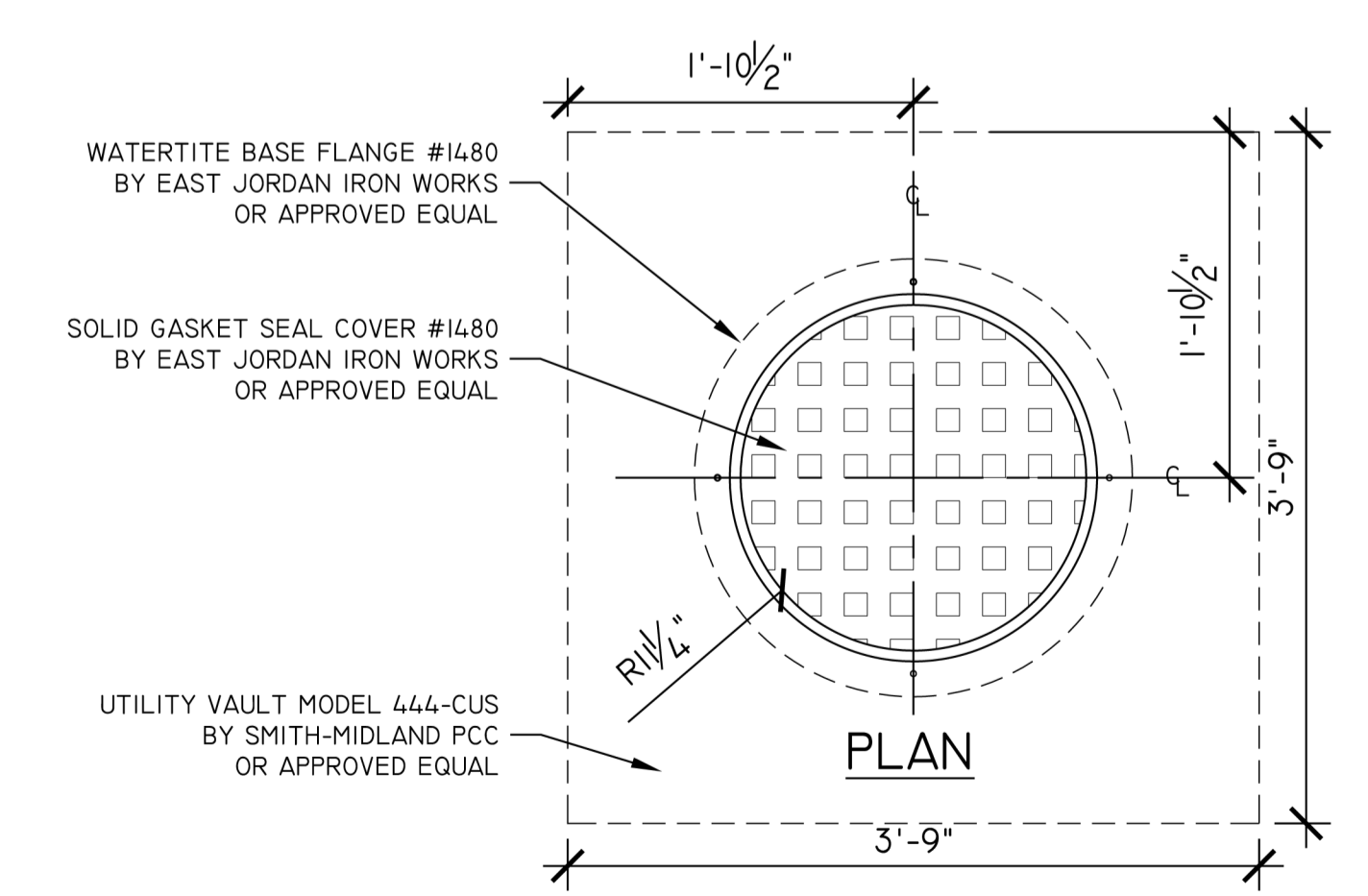
2 DOUBLE CHECK VALVE, SHUT OFF VALVES & VAULT

L6.0 SECTION 1"=1'-0"



3 DOUBLE CHECK VALVE, SHUT OFF VALVES & VAULT

L6.0 PLAN 1"=1'-0"



**ARLINGTON VIRGINIA**

DEPARTMENT OF PARKS AND RECREATION

Park Development Division  
2100 Clarendon Boulevard, Suite 414  
Arlington, VA 22201  
Phone: 703.228.3323  
Fax: 703.228.3328

**IFB #617-12**

Project Name and Location

**Ft Myer Heights Playground Reconstruction**

1400 N. Fort Myer Drive  
Arlington, VA

Sheet Title  
**Utilities Plan**

Approvals	Date
<i>D. Welch</i> Department Director	2/27/12
<i>A. D. Williams</i> Park Development Division Chief	2/21/12
<i>B. J. Williams</i> Design Unit Supervisor	2/21/12

Revisions	Date
Δ	

Designed: AW  
Drawn: AW  
Checked: BG

Filename: Utilities.dwg  
Plotted: May 09, 2012

Scale: AS SHOWN  
Date: DATE

**ARLINGTON COUNTY, VIRGINIA**  
DEPARTMENT OF ENVIRONMENTAL SERVICES

**FT MYER HEIGHTS PLAYGROUND RECONSTRUCTION**  
UTILITIES PLAN  
ARLINGTON COUNTY PROJECT / BY-RIGHT

SCALE: AS SHOWN	DESIGNED:	CHECKED:
SUBMITTED DATE:	APPROVED DATE:	APPROVED DATE:
APPROVED DATE:	CHIEF TRANSP. PLANNING BUREAU	CHIEF TRANSP. ENGINEERING BUREAU
CHIEF WATER, SEWER, & STR. BUREAU	CHIEF ENGINEERING BUREAU	DIRECTOR OF ENV. SERVICES
	SHEET L6.0	CONTRACT H-SHEET 6 OF 14