

**IFB #617-12**

Project Name and Location

**Ft Myer Heights  
Playground  
Reconstruction**

1400 N. Fort Myer Drive  
Arlington, VA

Sheet Title

**Play Area  
Equipment  
Layout Plan**

Approvals	Date
<i>D. Welch</i>	2/27/12
Department Director	
<i>A. DLH</i>	2/21/12
Park Development Division Chief	
<i>B. J. ...</i>	2/21/12
Design Unit Supervisor	

Revisions	Date

Designed: AW  
Drawn: AW  
Checked: BG

Filename: Play Area Equipment Layout  
Plotted: Feb 16, 2012

Scale: AS\_SHOWN  
Date: DATE

Seal

**MATERIALS LEGEND:**

	DETAIL # SHEET #		CONCRETE SEATWALL		PARK SIGNS - LOCATIONS TO BE DETERMINED IN THE FIELD
	PICNIC TABLE (TYP SYM)		CONCRETE EDGE RESTRAINT - REFER TO PLANS AND SPECIFICATIONS		SYNTHETIC TURF SAFETY SURFACING
	BENCH (TYP SYM)		PERVIOUS PAVEMENT		PLAY SAND
	BBQ (TYP SYM)				
	TRASH RECEPTACLE (TYP SYM)				

**PLAY EQUIPMENT LEGEND:**

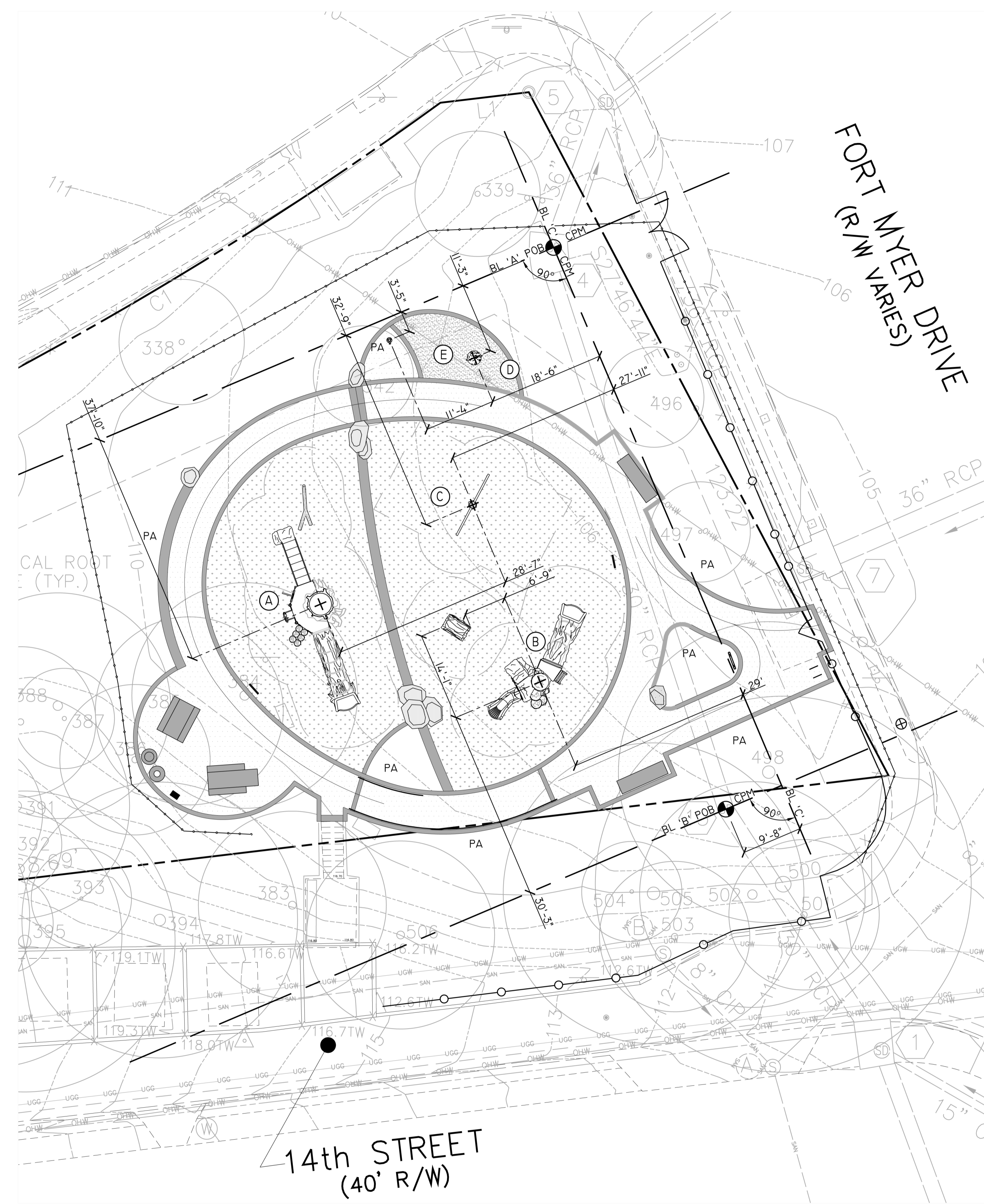
KEY	QTY.	ITEM	MODEL NO.	MANUFACTURER	REMARKS	COLOR
(A)	1	5-12 CRE8PLAY LARGE STRUCTURE W/BALLANCE BEAM	CUSTOM	CRE8PLAY	AVAIL. FROM CUNNINGHAM REC. 1.800.438.2780	AS APPROVED BY SHOP DRAWINGS
(B)	1	2-5 CRE8PLAY SMALL STRUCTURE W/LOG CRAWL	CUSTOM	CRE8PLAY	AVAIL. FROM CUNNINGHAM REC. 1.800.438.2780	AS APPROVED BY SHOP DRAWINGS
(C)	1	THEMED "T" SWING	CUSTOM	CRE8PLAY	AVAIL. FROM CUNNINGHAM REC. 1.800.438.2780	AS APPROVED BY SHOP DRAWINGS
(D)	1	FOSSIL DIG	I70793A	LANDSCAPE STRUCTURES, INC.	AVAIL. FROM SPARKS @ PLAY 410.354.4151	AS APPROVED BY SHOP DRAWINGS
(E)	1	FOUNTAIN	M593	KOMPAN LTD	AVAIL. FROM VAP STUDIO INC 804.918.2288	AS APPROVED BY SHOP DRAWINGS

**PLAY EQUIPMENT NOTES:**

- PRIOR TO CONSTRUCTION, THE CONTRACTOR SHALL STAKE THE LAYOUT OF PLAY EQUIPMENT AND OTHER IMPROVEMENTS IN THE FIELD FOR APPROVAL BY THE PROJECT OFFICER.
- THE CONTRACTOR SHALL CERTIFY THAT THE COMPLETED PLAY AREA MEETS ALL APPLICABLE ASTM, CPSC, AND ADA STANDARDS, AND SHALL BE RESPONSIBLE FOR CORRECTING ANY NONCOMPLIANCE. THE CONTRACTOR SHALL DEMONSTRATE THAT EQUIPMENT TO BE INSTALLED IS IPEMA CERTIFIED.
- PLAY EQUIPMENT SHALL BE INSTALLED PER MANUFACTURER'S INSTRUCTIONS AND RECOMMENDATIONS.
- THE CONTRACTOR SHALL SUBMIT SHOP DRAWINGS FOR ALL PLAY EQUIPMENT FOR PROJECT OFFICER'S APPROVAL PRIOR TO ORDERING.

**SYNTHETIC TURF SAFETY SURFACING NOTES:**

- PRIOR TO CONSTRUCTION, THE CONTRACTOR SHALL STAKE THE LAYOUT OF SYNTHETIC TURF AND ASSOCIATED DRAINAGE IMPROVEMENTS IN THE FIELD FOR APPROVAL BY THE PROJECT OFFICER.
- SYNTHETIC TURF SURFACING SHALL BE PLACED OVER A FOAM PAD AND AGGREGATE BASE AS SHOWN ON
- INTERIOR EDGE OF CONCRETE EDGING ADJACENT TO PLAY AREAS SHALL HAVE A 1" RADIUS, AS SHOWN ON
- SYNTHETIC TURF SHALL BE INSTALLED PER MANUFACTURER'S RECOMMENDATION.
- SYNTHETIC TURF SHALL BE AS REQUIRED TO MEET APPLICABLE ASTM, CPSC AND ADA STANDARDS FOR THE MAXIMUM FALL HEIGHT OF EACH PLAY UNIT.



CONSTRUCTION ABBREVIATIONS (AS APPLICABLE)

ALIGN	ALIGNMENT	R	RADIUS
BL	BASELINE	SYM	SYMBOL
CONC	CONCRETE	TYP	TYPICAL
CPM	CENTERPOINT OF MANHOLE	VAR	VARIOUS
EQ	EQUAL		
PA	PLANTING AREA		
POB	POINT OF BEGINNING		

**NOTE:**  
THE INSTALLATION OF ALL PLAY EQUIPMENT MUST COMPLY WITH THE CPSC HANDBOOK FOR PUBLIC PLAYGROUND SAFETY, PUB. NO. 325 (LATEST EDITION) AND ASTM F 1487 (LATEST EDITION).

