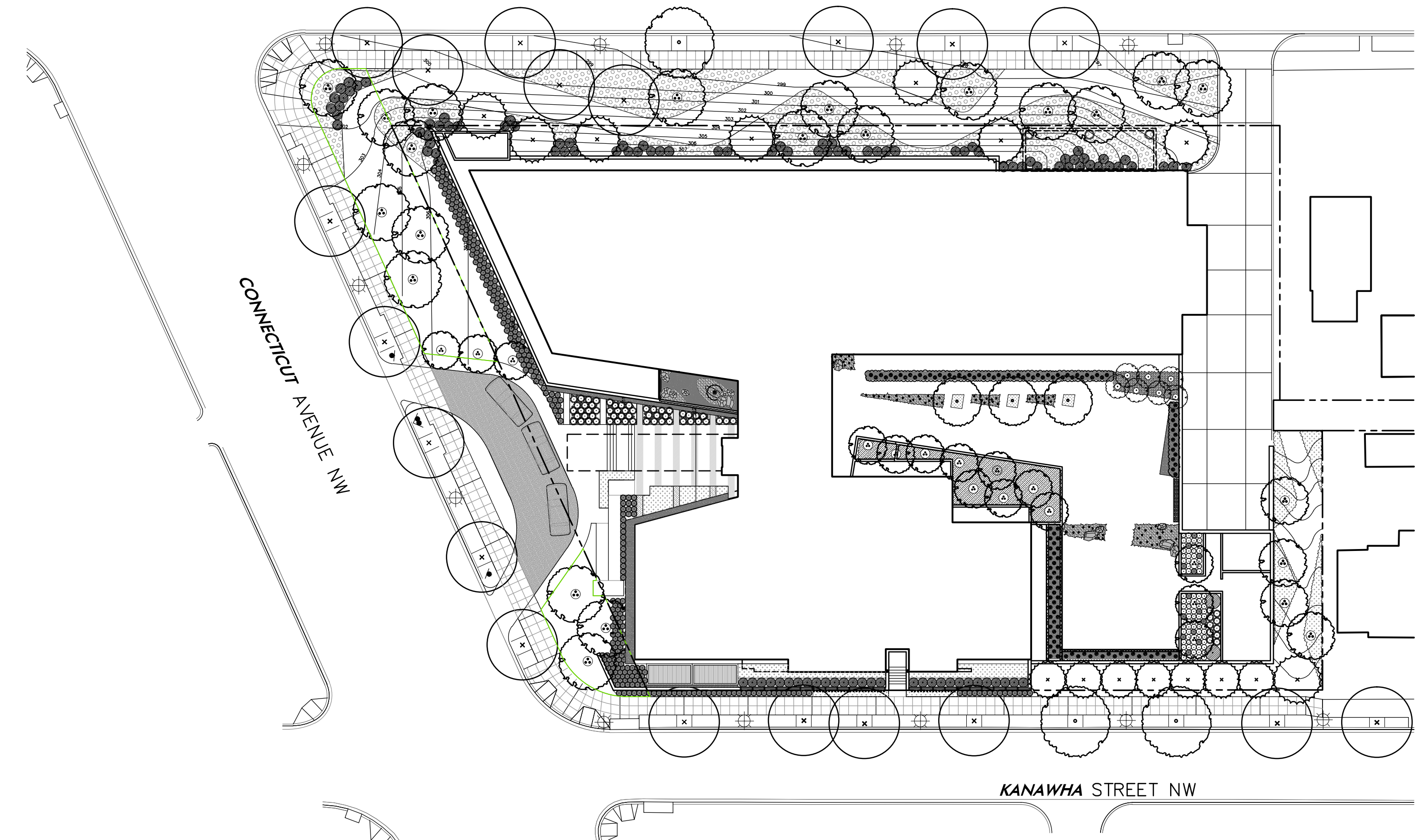


S:\NRC Clients\CafritzeEnterprises\5333 Connecticut_Washington_DC\Maps\DWGs\prelim\5333CT-LABase-rev.dwg, drop-off 131025, 2/28/2014 8:33:52 AM, HulseC, DWG To PDF_CH_flattened_300dpi.pc3, AN

MILITARY ROAD NW

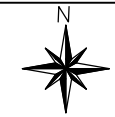
CONNECTICUT AVENUE NW

KANAWHA STREET NW



5333 Connecticut

Drop-off



SCALE: 1" = 300'-0" Parker Rodriguez, Inc.