

CITY CENTER DC
CCDC MASTER DEVELOPER, LLC

RENTAL BUILDINGS - DOG PARK STUDY

August 30, 2012

Under review for
Code Interpretation for
Occupancy

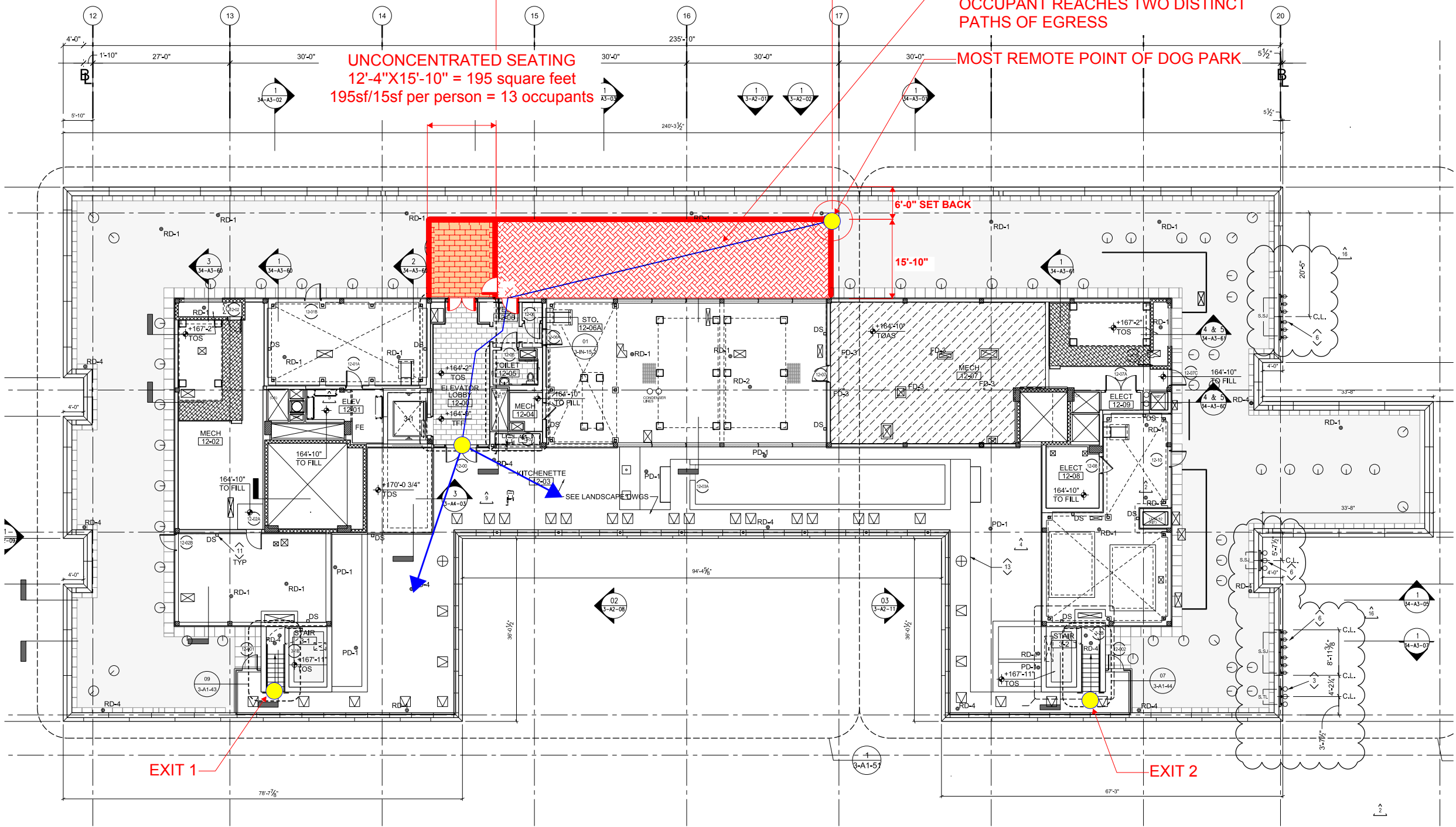
OCCUPANCY AND MEANS OF EGRESS STUDY
34 Total Occupants at Proposed Dog Park

DOG PARK USE
65'-0"X15'-10"=1030 square feet
1030sf/ 50sf per person = 21 Occupants

UNCONCENTRATED SEATING
12'-4"X15'-10" = 195 square feet
195sf/15sf per person = 13 occupants

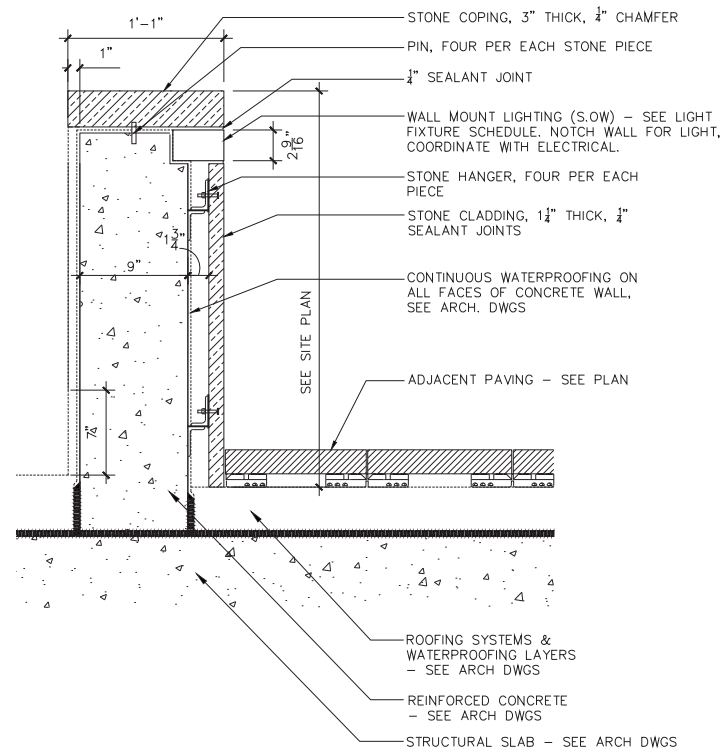
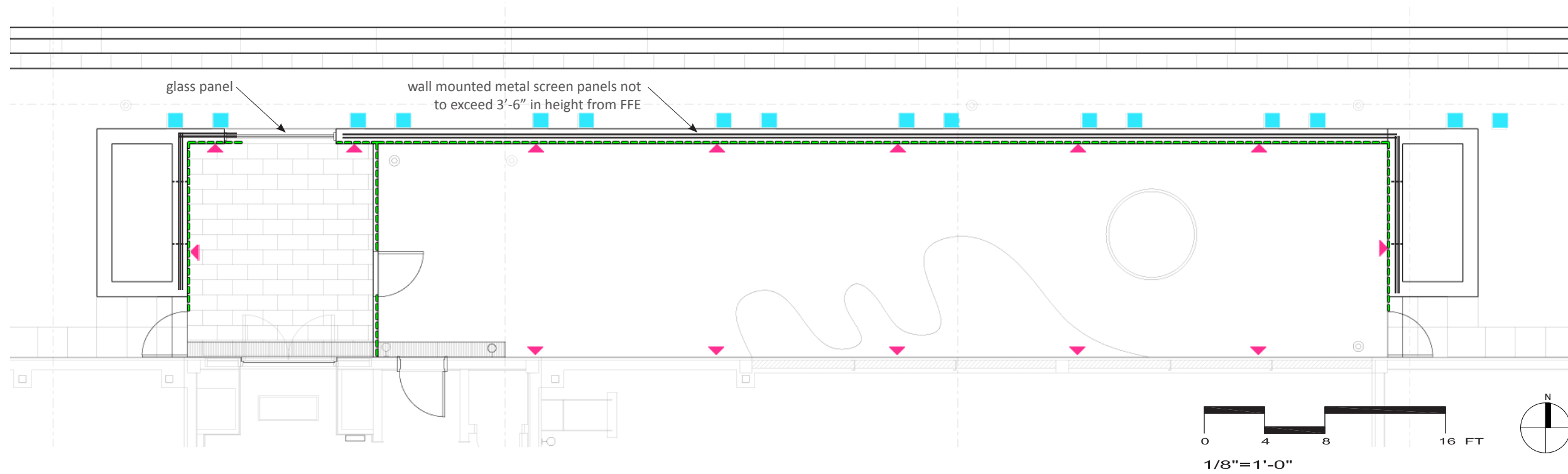
100' OF COMMON PATH TRAVEL
FROM MOST REMOTE POINT UNTIL
OCCUPANT REACHES TWO DISTINCT
PATHS OF EGRESS

MOST REMOTE POINT OF DOG PARK



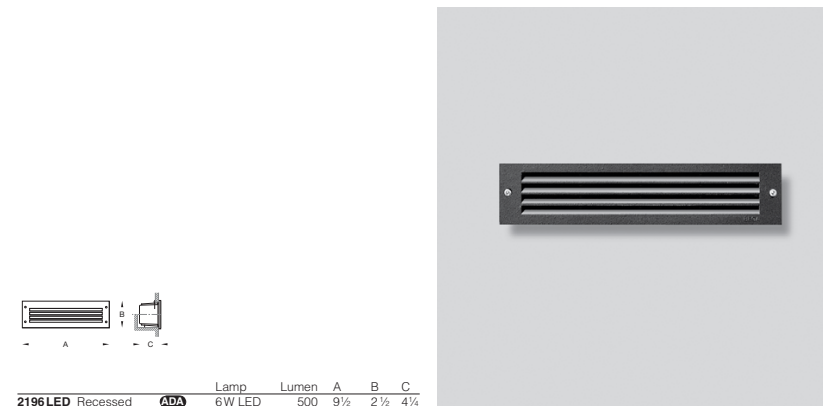
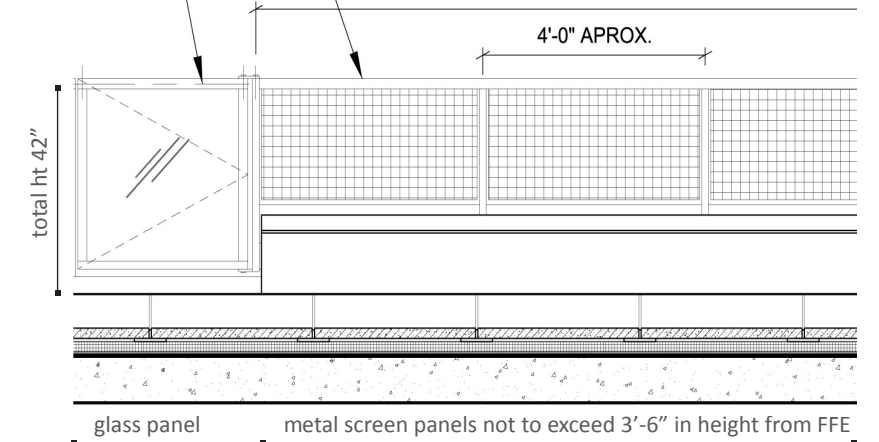
DOG PARK

Light and Window Washing Details



RAIL TYPE R-5 RE: 07 / 34-A5-18

RAIL TYPE R-3 GATE
RE: 02 / 34-A5-18



2196 LED Recessed ADA 6W LED 500 9 1/2 2 1/2 4 1/4
BEGA-US 1000 BEGA Way, Carpinteria, CA 93013 [P] 805-684-0533 [F] 805-684-6682
©Copyright BEGA-US 2010 updated 5/10

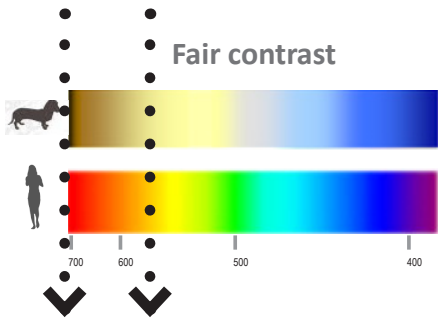
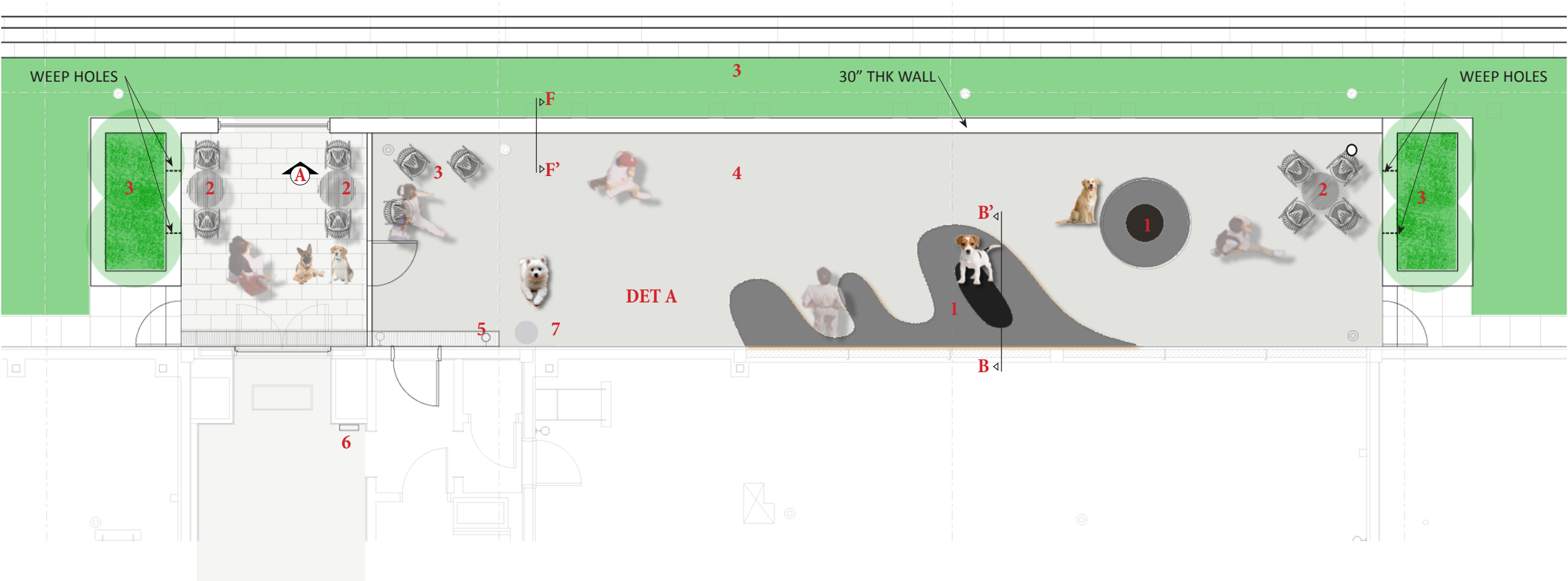
SOW Wall Mounted Light fixture

SECTION F-F' Wall with SOW Light detail

ELEVATION A Glass Panel and wall detail

KEY

- 1 CLIMBING MOUND- CONCRETE WITH PEBBLE MAT
- 2 SEATING
- 3 PLANTING
- 4 PLAY AREA- DECOMPOSED GRANITE, SEE DETAIL A
- 5 DOG WATER STATION/HOSE BIB
- 6 PET STATION
- 7 TRASH CAN



MATERIALS- DESIGN INTENT ONLY
MATERIALS TO BE REVIEWED WITH ROOFING
MANUFACTURER TO DETERMINE SUITABILITY

DOG PARK LAYOUT
Material Option 1



DECOMPOSED GRANITE

PROS
NOT AS HARD AS CONCRETE
EASIER TO CLEAN
REFLECTS HEAT

CONS
ODOR CONTROL



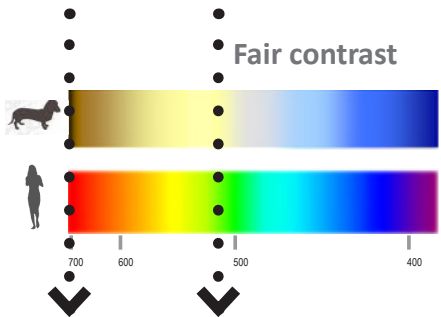
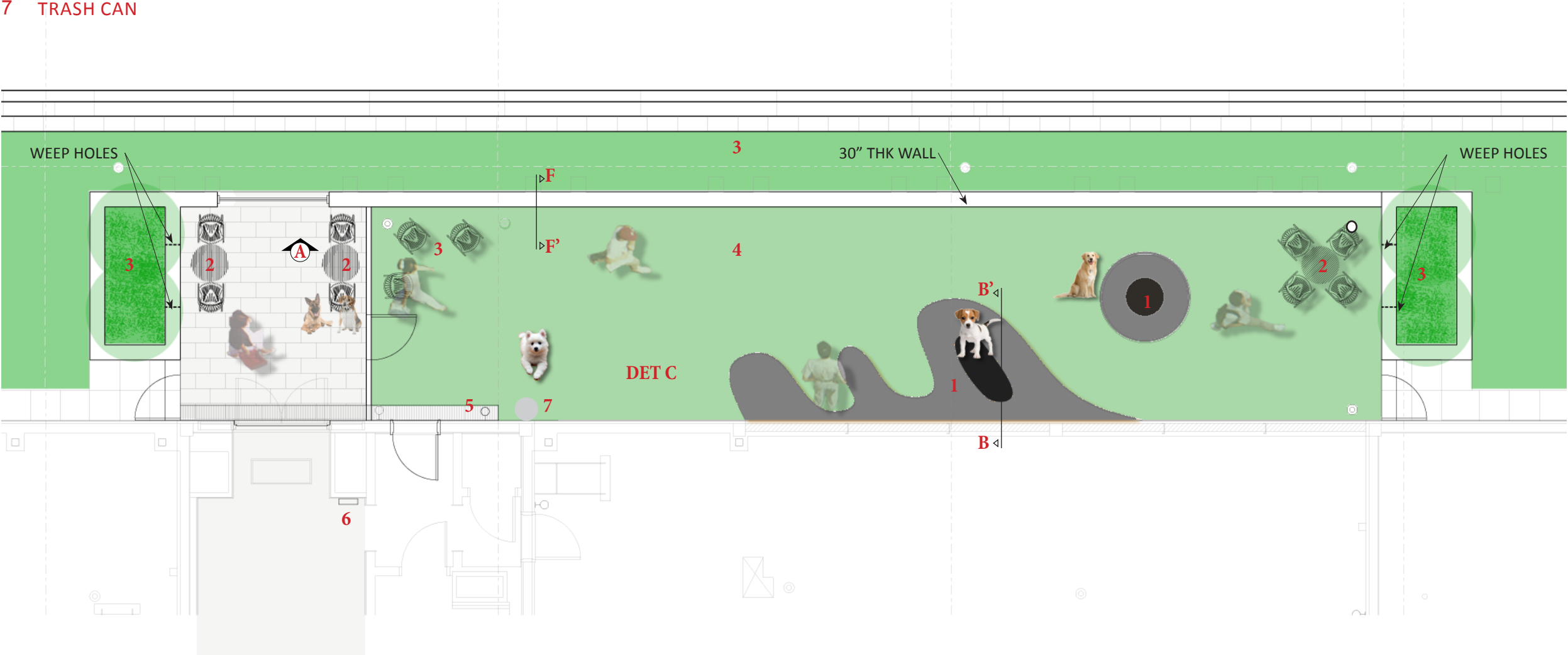
FAUX STONE CARPET

PROS
EXCITING FOR DOGS
EASIER TO CLEAN
ODOR RESISTANT

CONS
HARDER ON DOGS FEET/JOINTS

KEY

- 1 CLIMBING MOUND- CONCRETE WITH PEBBLE MAT
- 2 SEATING
- 3 PLANTING
- 4 PLAY AREA- K9 SYNTHETIC GRASS
- 5 DOG WATER STATION/HOSE BIB
- 6 PET STATION
- 7 TRASH CAN



DOG PARK LAYOUT
Material Option 2



K9 SYNTHETIC GRASS

PROS
AESTHETICALLY PLEASING
COMFORTABLE FOR DOGS

CONS
HARDER TO CLEAN
ODOR CONTROL
CAN GET HOT IN SUN



FAUX STONE CARPET

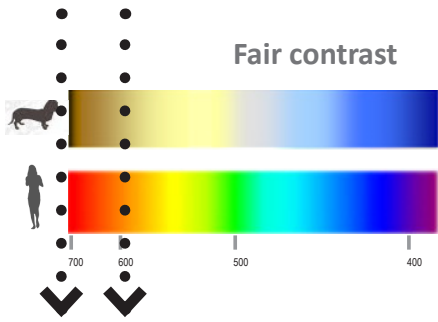
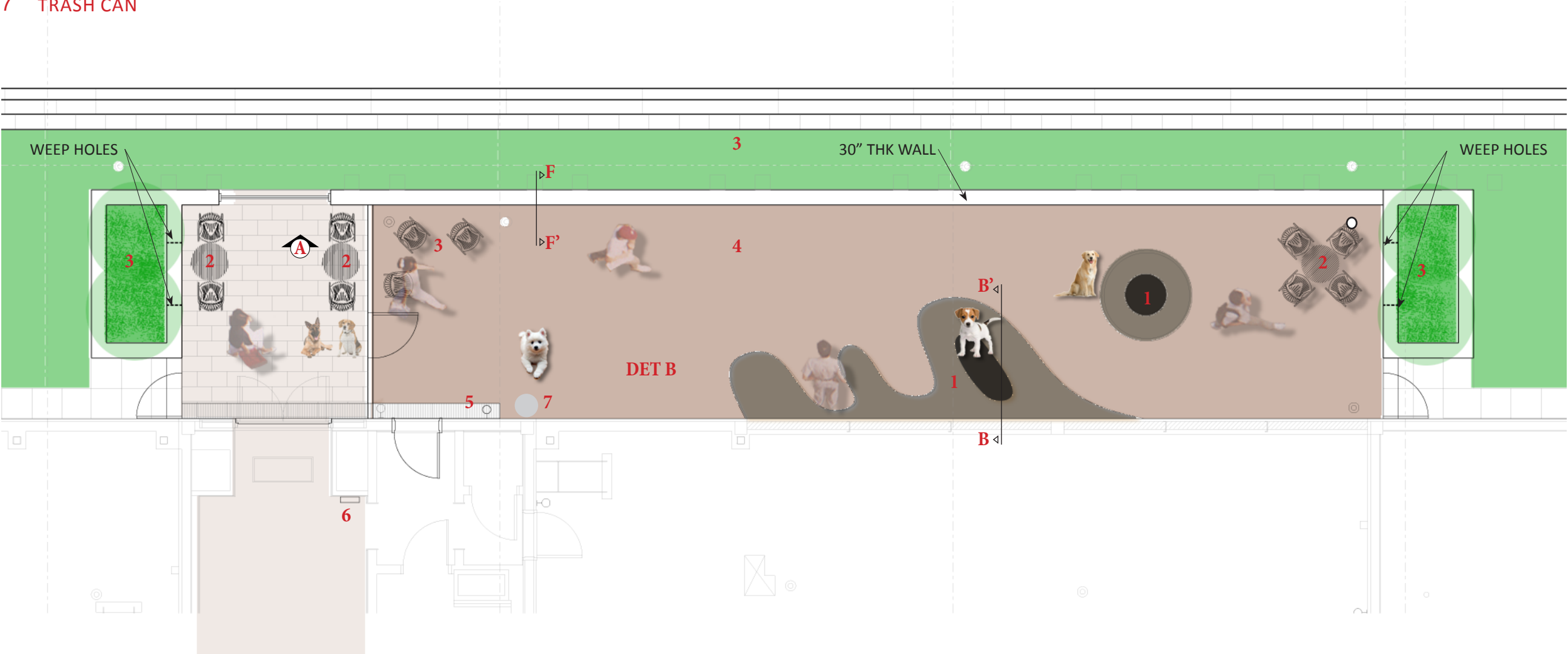


PROS
EXCITING FOR DOGS
EASIER TO CLEAN
ODOR RESISTANT

CONS
HARDER ON DOGS FEET/JOINTS

KEY

- 1 CLIMBING MOUND- CONCRETE WITH PEBBLE MAT
- 2 SEATING
- 3 PLANTING
- 4 PLAY AREA- PERMEABLE FLEXI-PAVE
- 5 DOG WATER STATION/HOSE BIB
- 6 PET STATION
- 7 TRASH CAN



MATERIALS- DESIGN INTENT ONLY
MATERIALS TO BE REVIEWED WITH ROOFING
MANUFACTURER TO DETERMINE SUITABILITY



DOG PARK LAYOUT
Material Option 3



FLEXI-PAVE P1500

PROS
SOFT FOR DOGS FEET/JOINTS
EASIER TO CLEAN
COMPLETELY PERMEABLE

CONS
MAY GET HOT IF DARK COLOR IS USED



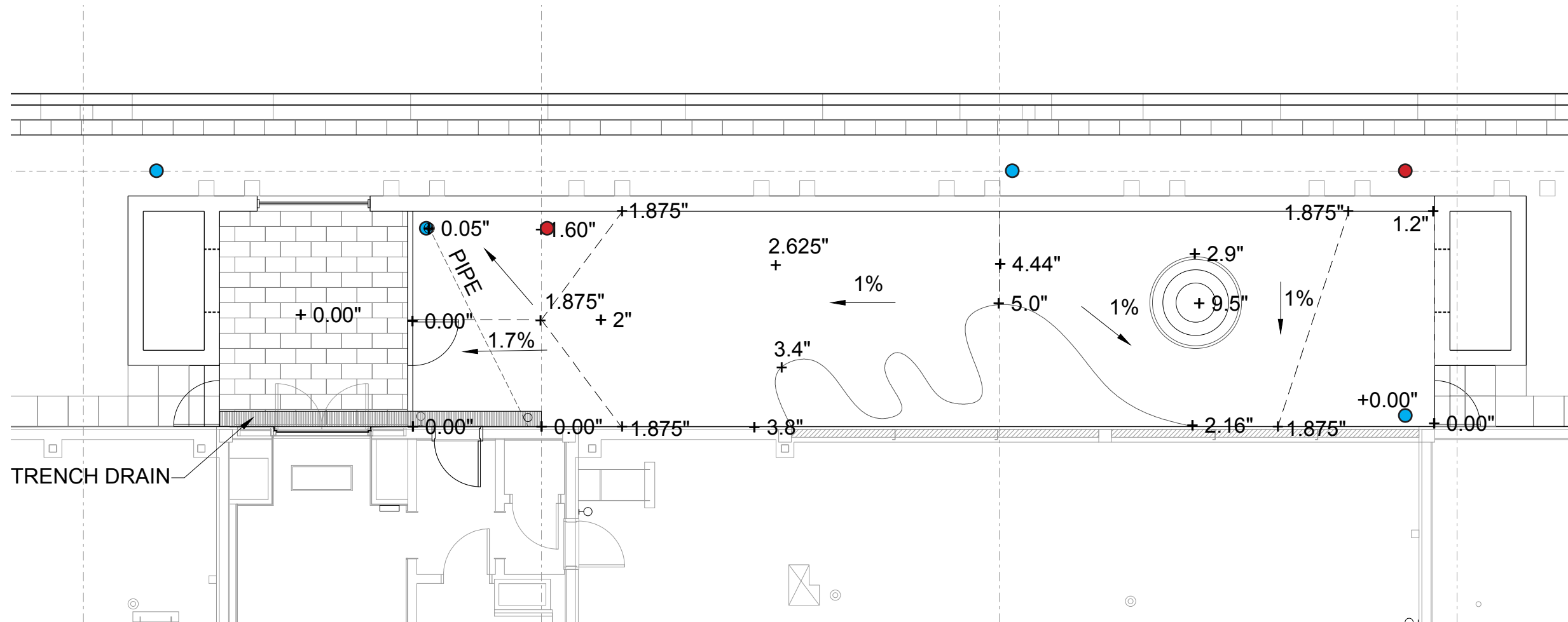
FAUX STONE CARPET

PROS
EXCITING FOR DOGS
EASIER TO CLEAN
ODOR RESISTANT

CONS
HARDER ON DOGS FEET/JOINTS

DOG PARK LAYOUT

Grading and Drainage

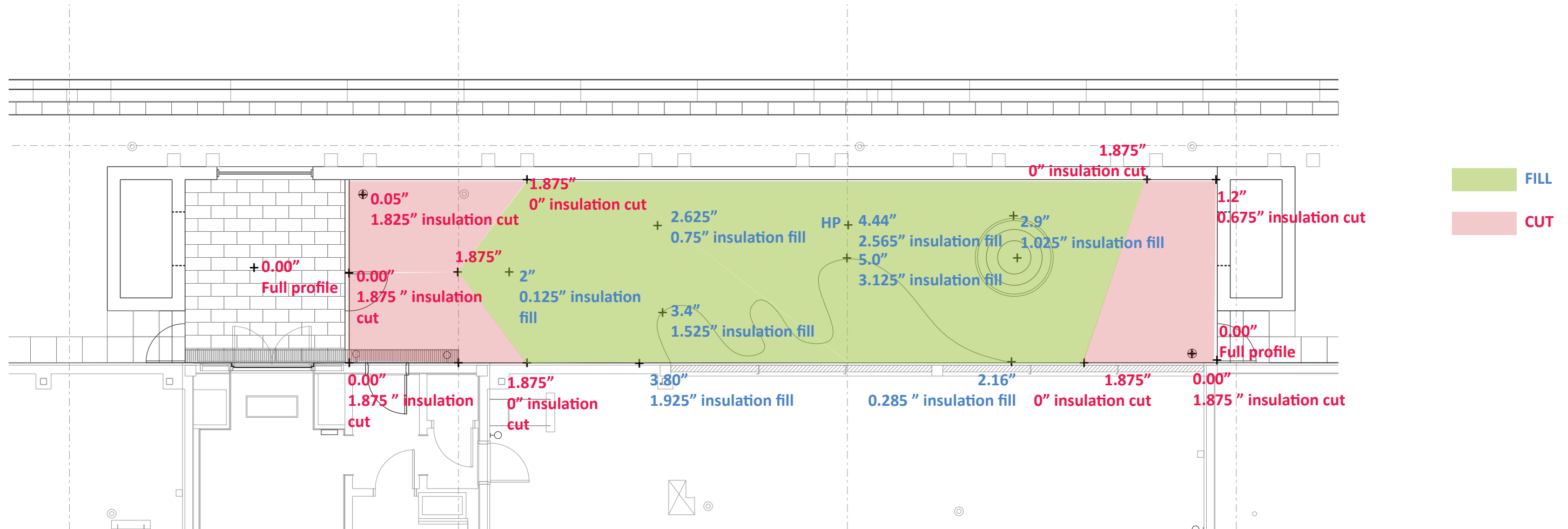


- relocated drains under paving surface
- original drain location under paving surface



DOG PARK LAYOUT

insulation cut/fill diagram

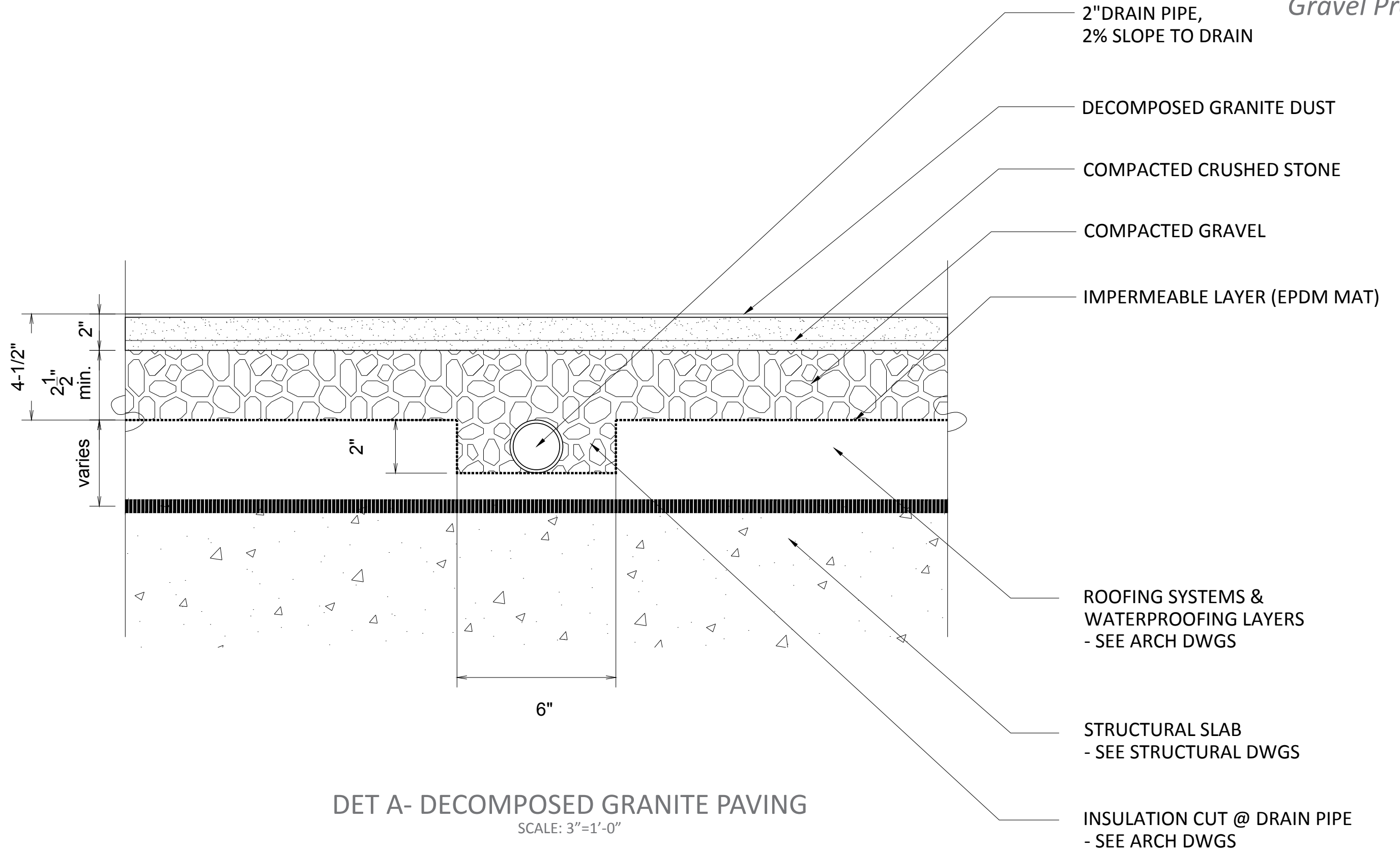


NOTE: DIAGRAM SHOWS MAXIMUM INSULATION CUTS BASED ON THE 4.5" PROFILE OF DECOMPOSED GRANITE PAVING. ALL OTHER PROFILES WILL HAVE LESS INSULATION CUT/FILLS



DOG PARK PLAY AREA

Gravel Profile

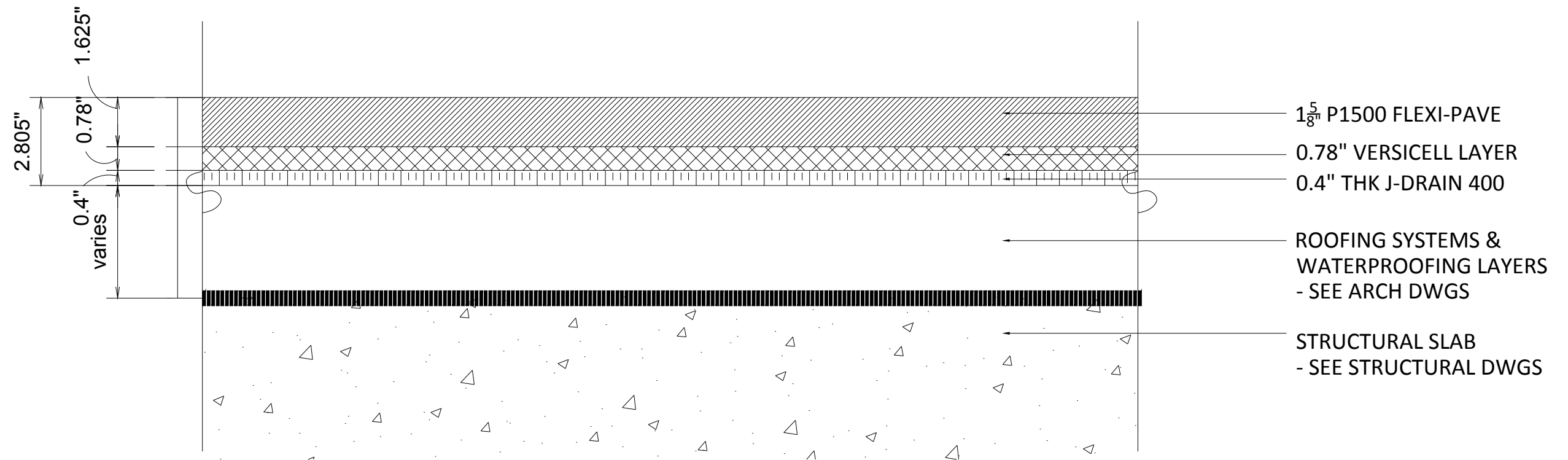


- 1. **Material and properties:** Flexi Pave is a flexible permeable surface made of 3/8” recycled rubber granules bonded by single component moisture cured urethennr. It shall be a seamless poured-in-place product, impact absorbing and durable.
- 2. **Permeability:** 0.15 cm/sec permeability rate
- 3. **Maintenance/cleaning:** Manufacturer to repair any disintegration, cracks, defects or settlement in the surface for up to 2 years.Resists UV degradation and slipping.
- 4. **Snow removal:** Flexi-Pave can handle plowing (with rubber edge) and even salting, but we do not recommend sanding .Flexi-Pave is extremely slip resistant.
- 5. **Attachment for wind loads and removal for servicing the roof:** NA, Poured-in-place, no uplift.Porosity reduces the negative air pressure force found affecting roof tile and membranes.
- 6. **Drainage –** Storm water runs right through the surface
- 7. **Flammability of material:** Classified as non flammable- Class A fire rating with ASTM.
- 8. **Durability of material:** One year standard warranty and if maintained without mechanical damage, can be a lifetime product.
- 9. **Other dog parks where used –** in progress



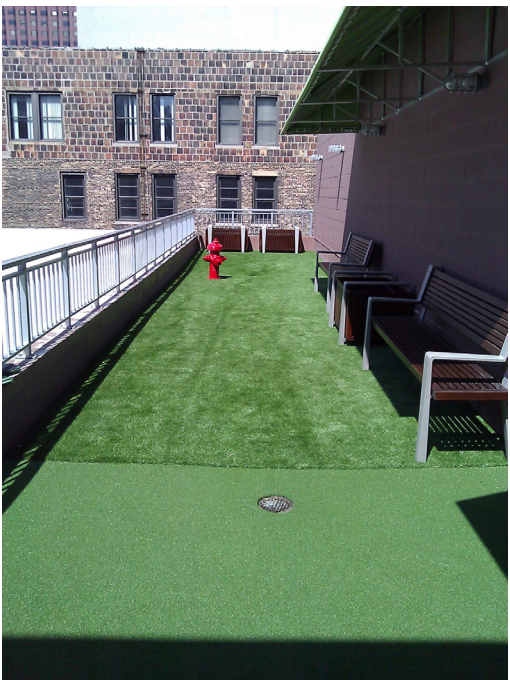
DOG PARK PLAY AREA

Flexi-Pave Detail



DET B-FLEXI-PAVE PROFILE
SCALE: 3"=1'-0"

1. **Material and properties:** Drainable, durable antimicrobial synthetic grass designed for dogs. Installed typically over a floating grid base, it allows proper air circulation and drainage.
2. **Permeability:** >413.2"/ hr or 0.29 cm/sec permeability rate
3. **Maintenance/cleaning:** Manufacturer to repair any disintegration, cracks, defects or settlement in the surface for up to 2 years. Resists UV degradation and slipping.
4. **Snow removal:** Plastic Bladed Shovels and Snow Blowers with softened bottom corners are fine. Because the systems drain instantly (134.7 Gallons per minute) ice will not form unless on the top of old hard packed snow. 1" pile creates enough compression traction when covered in snow.
5. **Attachment for wind loads and removal for servicing the roof:** The K9Grass is essentially a screen, it will not trap much wind at all. It is stapled/ screwed every 1" in to a fixed perimeter board.
6. **Drainage:** Storm water runs right through the surface through the drainage boards to the drains.
7. **Flammability of material:** Sample passes pill flammability testing ASTM D2859 for Flammability of Finished Textile Floor Covering Materials
8. **Durability of material:** 8 yrs limited warranty. K9Grass Extreme uses the strongest blade available. Life-span of over 10 years.
9. **Other dog parks where used:** Schulykill River Dog Park at Spruce and S 25th St, Philadelphia. widely installed in extremely high use dog parks.





With its exclusive flow-through backing, short dense blade structure, and antimicrobial protection, K9Grass is the ideal surface for both residential and commercial pet areas.

COMPONENTS	K9Grass Lite	K9Grass Classic	K9Grass Xtreme
YARN TYPE	<ul style="list-style-type: none">Primary: Polyethylene monofilamentSecondary: Heat set textured nylon monofilament	<ul style="list-style-type: none">Primary: Polyethylene monofilamentSecondary: Heat set textured nylon monofilament	<ul style="list-style-type: none">Dual Primaries: Polyethylene XP slit film straight and curled
YARN COLOR	<ul style="list-style-type: none">Primary: Summer greenSecondary: Turf green	<ul style="list-style-type: none">Primary: Summer greenSecondary: Turf green	<ul style="list-style-type: none">Field/olive green
YARN COUNT	<ul style="list-style-type: none">Primary: 5,000/4Secondary: 4,200/8	<ul style="list-style-type: none">Primary: 5,000/4Secondary: 4,200/8	<ul style="list-style-type: none">5,040/1
CONSTRUCTION	<ul style="list-style-type: none">Knitted	<ul style="list-style-type: none">Knitted	<ul style="list-style-type: none">Knitted
BLADE HEIGHT	<ul style="list-style-type: none">1"	<ul style="list-style-type: none">1"	<ul style="list-style-type: none">1"
FACE WEIGHT	<ul style="list-style-type: none">56 ounces	<ul style="list-style-type: none">72 ounces	<ul style="list-style-type: none">58 ounces
TOTAL PRODUCT WEIGHT	<ul style="list-style-type: none">67 ounces	<ul style="list-style-type: none">84 ounces	<ul style="list-style-type: none">69 ounces
BACKING	<ul style="list-style-type: none">Flow-through backing	<ul style="list-style-type: none">Flow-through backing	<ul style="list-style-type: none">Flow-through backing
ANTIMICROBIAL PROTECTION	<ul style="list-style-type: none">AlphaSan®	<ul style="list-style-type: none">AlphaSan®	<ul style="list-style-type: none">None
SEAMING	<ul style="list-style-type: none">Turf adhesive	<ul style="list-style-type: none">Turf adhesive	<ul style="list-style-type: none">Turf adhesive
INFILL	<ul style="list-style-type: none">NONE	<ul style="list-style-type: none">NONE	<ul style="list-style-type: none">NONE


WHAT MAKES K9GRASS UNIQUE?	
Durable	Dense interlocking construction of high-grade materials
Drainable	Unique knitted flow-through backing
Cleanable	Short, dense, non-infill construction greatly enhances cleanability
Safe	Integral AlphaSan® antimicrobial protection built in to Classic and Lite

DOG PARK PLAY AREA


Synthetic Turf Options

Recommended: K9Grass Xtreme for durability

M0070 Rev. 06/11



4500 Bogan Ave. NE, Albuquerque, NM 87109
866.992.7876 | foreverlawn.com | K9Grass.com



DOG PARK PLAY MOUND
Mound grading

