

401 KESHWOODS ST. NE
 WASHINGTON, DC 20017

PARKER RODRIGUEZ INC.
 222 North Street, S.E.
 Atlanta, GA 30316
 Phone: 404.525.1111
 Fax: 404.525.1112

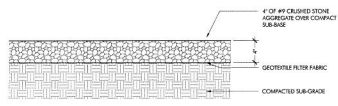
OWNER
 CDC
 323 Connecticut Avenue, NW
 Suite 200
 Washington, DC 20001
 202.691.8930

ARCHITECT
 Hensel & Phelps
 1100 North 16th St.
 Washington, DC 20004
 Phone: 202.462.1100
 202.462.1101

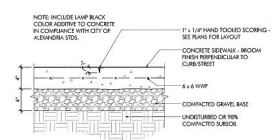
CONSULTANT
 Hillier Associates
 1700 L Street, N.E.
 Suite 700
 Atlanta, GA 30316
 770.391.7600

DESIGNER
 Hillier Associates
 2200 Peachtree Road
 Suite 200
 Atlanta, GA 30309
 770.477.1111

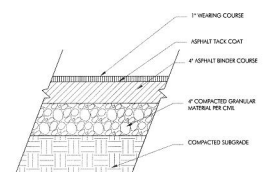
DATE
 05/10/2010



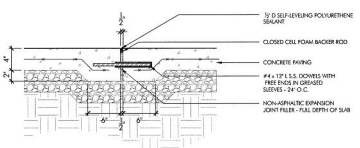
01 GRAVEL ON GRADE
 SCALE: 1:100'-0\"/>



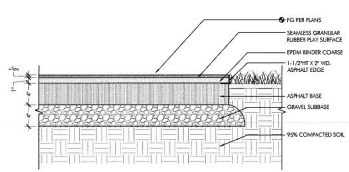
02 CONCRETE PAVING ON GRADE - PEDESTRIAN
 SCALE: 1:100'-0\"/>



03 ASPHALT PAVEMENT ON GRADE - VEHICULAR
 SCALE: 1:100'-0\"/>

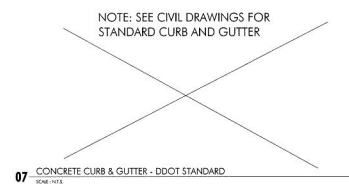


04 EXPANSION JOINT
 SCALE: 1:100'-0\"/>

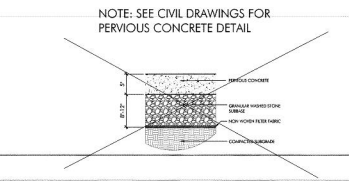


06 RUBBERIZED SURFACE ON GRADE - PEDESTRIAN
 SCALE: 1:100'-0\"/>

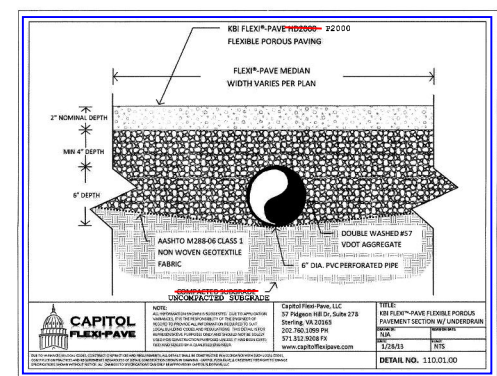
- NOTES:
1. RUBBER MIXTURE DESIGNED FOR 3 FT FALL HEIGHT
 2. RUBBER PLAY SURFACE TO BE SEAMLESS EUROFLEX BY DORC COLOR 780
 3. REINFORCE 1:1 WITH 1/2\"/>



07 CONCRETE CURB & GUTTER - DDOT STANDARD
 SCALE: 1:100'-0\"/>



08 PERVIOUS CONCRETE
 SCALE: 1:100'-0\"/>



09 FALL ZONE SURFACE AT WATER FEATURE PERIMETER
 SCALE: 1:100'-0\"/>

	NOTES: 1. ALL DIMENSIONS UNLESS OTHERWISE SPECIFIED. 2. ALL MATERIALS SHALL BE AS SPECIFIED OR APPROVED BY THE ARCHITECT. 3. ALL MATERIALS SHALL BE INSTALLED IN ACCORDANCE WITH THE MANUFACTURER'S INSTALLATION INSTRUCTIONS. 4. ALL MATERIALS SHALL BE INSTALLED IN ACCORDANCE WITH THE MANUFACTURER'S INSTALLATION INSTRUCTIONS.	Capitol Flex Pave, LLC 27 Paganos Mill Dr, Suite 27B Stafford, VA 22085 202.766.2099 FAX 571.332.8008 FX www.capitolflexpave.com	TITLE: FLEX™ PAVE FLEXIBLE POROUS PAVEMENT SECTION W/ UNDERDRAIN PLAN DATE: 05/10/10 BY: DETAIL NO. 110.01.00
	CAPITOL FLEX PAVE™ F2000 FLEXIBLE POROUS PAVING FLEX™ PAVE MEDIAN WIDTH VARIES PER PLAN 2" NOMINAL DEPTH 1/2" MIN. 4" DEPTH 6" DEPTH AASHTO M288-06 CLASS 1 NON WOVEN GEOTEXTILE FABRIC DOUBLE WASHED #37 VDOT AGGREGATE 6" DIA. PVC PERFORATED PIPE COMPACTED SUBGRADE		

REVISION	
02-MD-301	05-08-11
03-PROJ-201-001	07-26-11

HARDSCAPE DETAILS

ORIGINAL DATE: 05-08-11
 DRAWN BY: DC, DP
 CHECKED BY: DT, JP
 DATE: 05-10-10
 NORTH

SCALE: 1/8" = 1'-0"
 1" = 12'-0"

DD BID SET

12.01