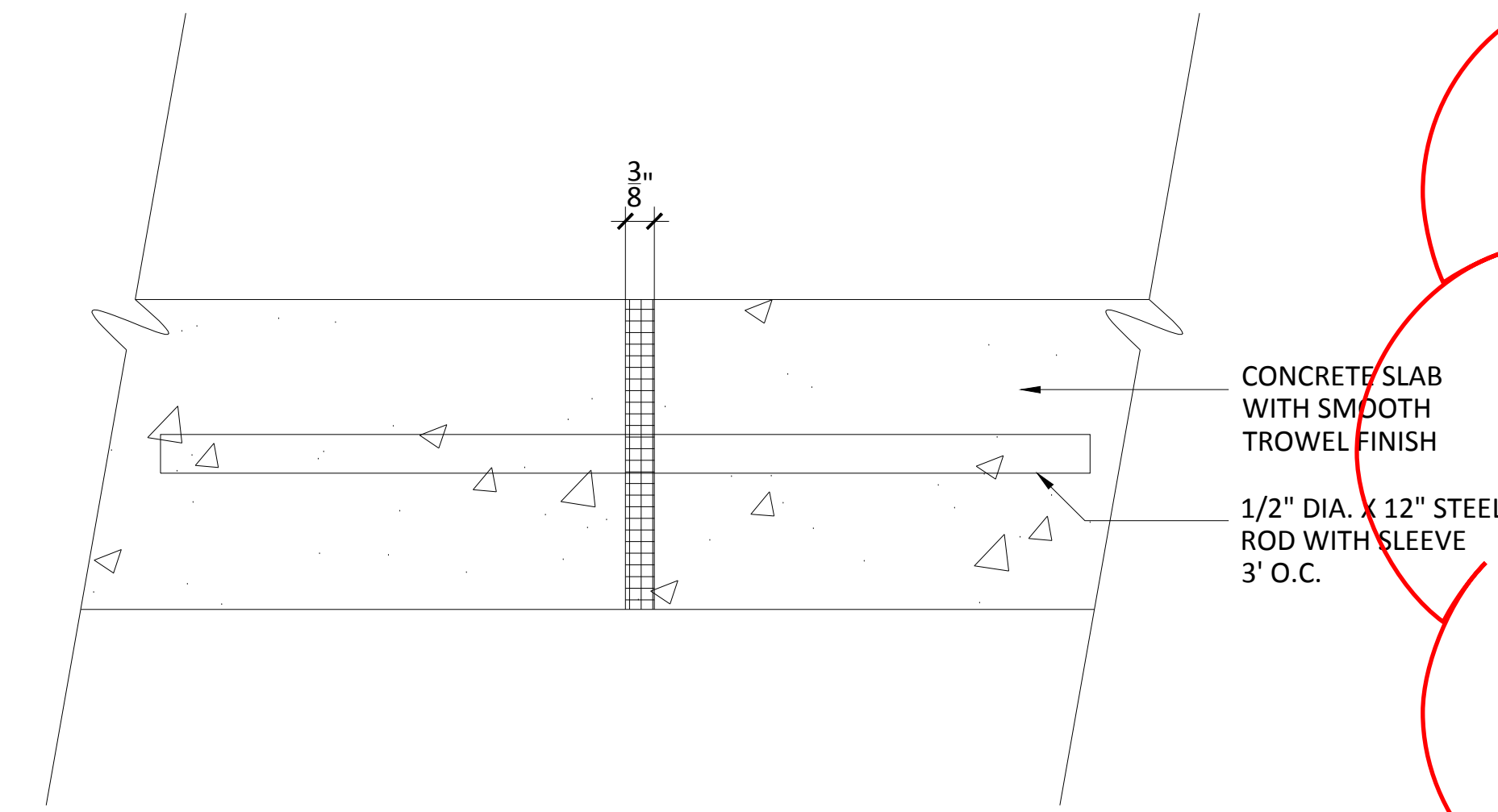
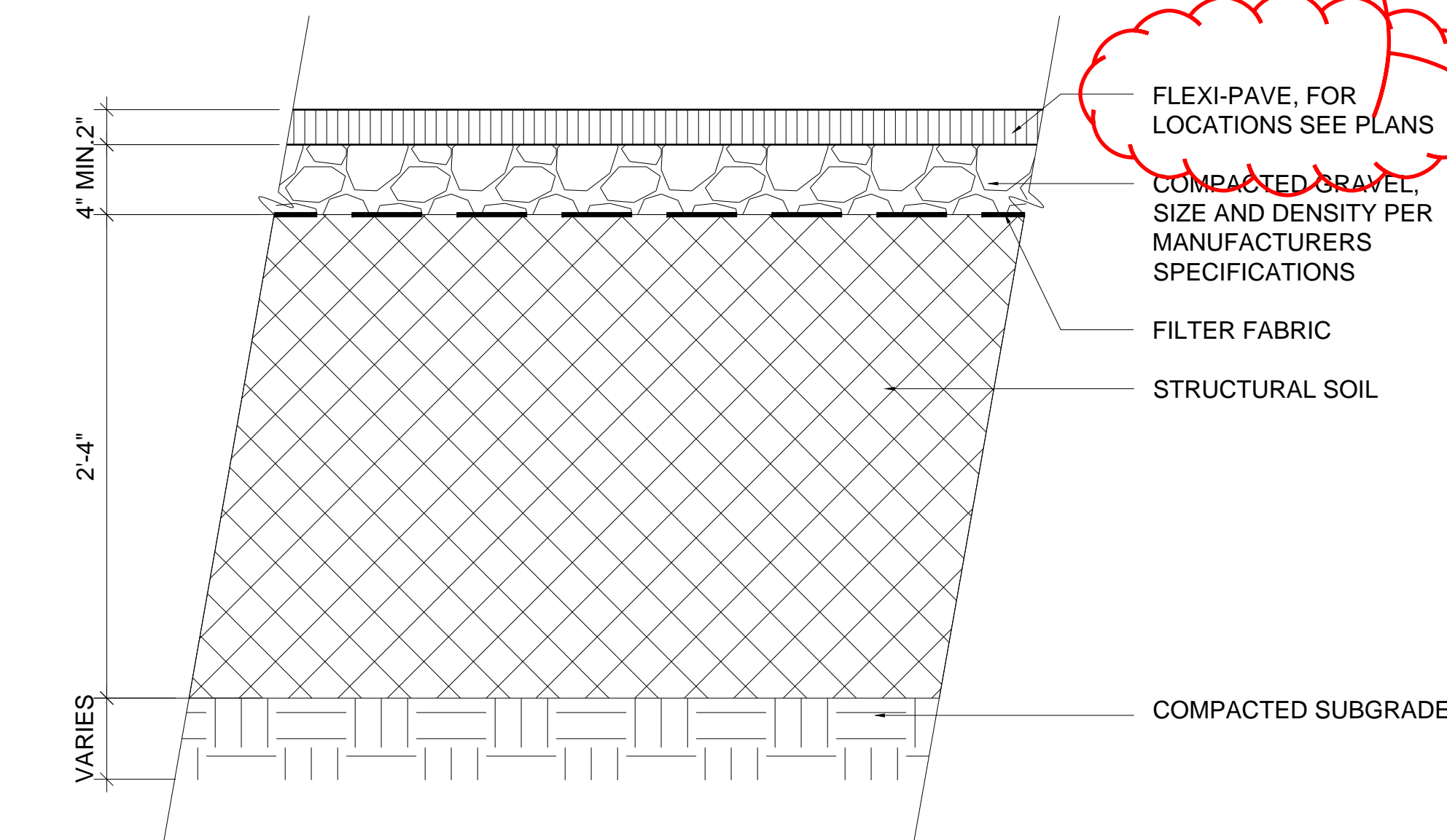


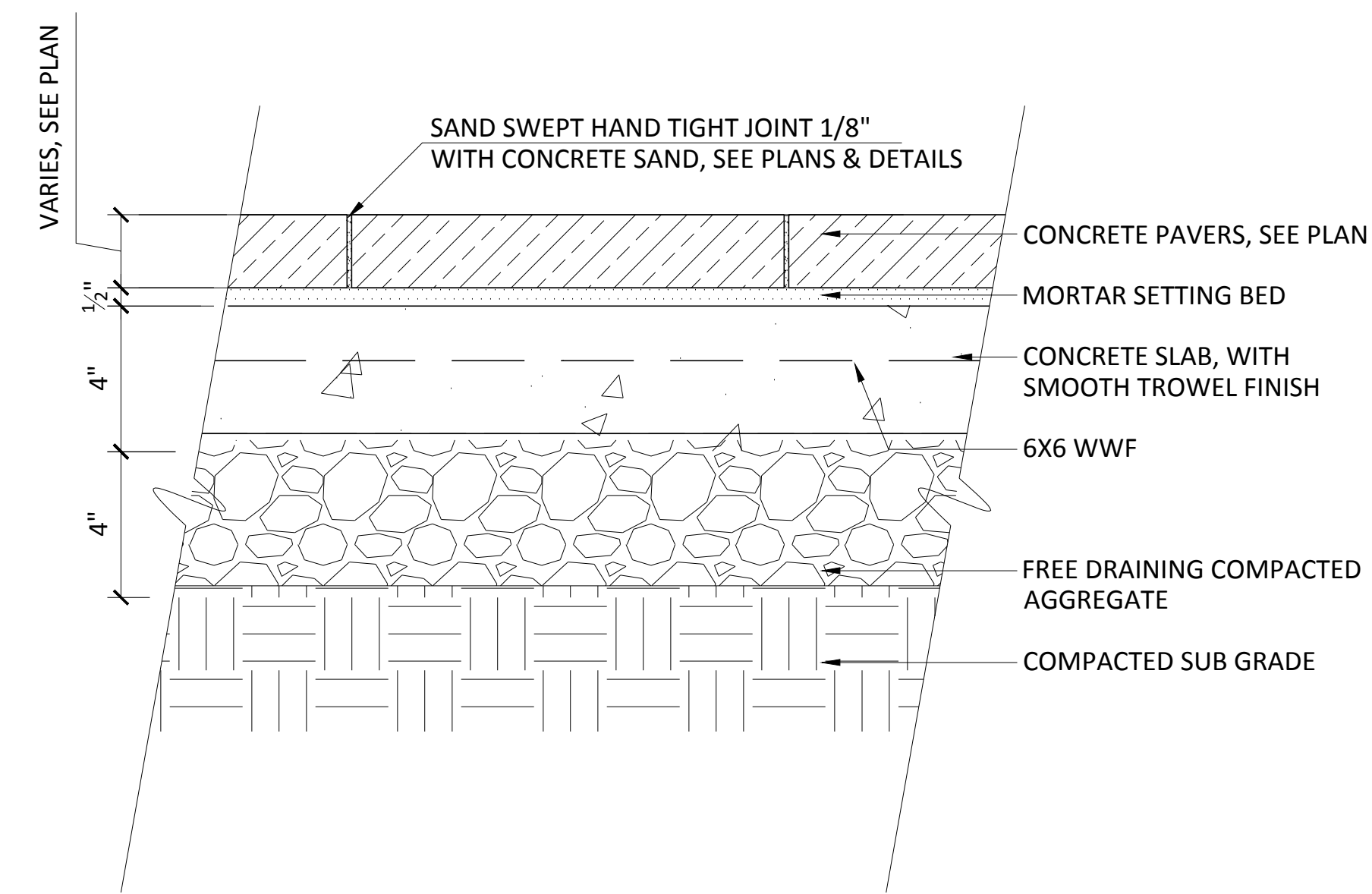
1  
L-930  
**CONCRETE PAVING**  
SCALE: 3" = 1'-0"



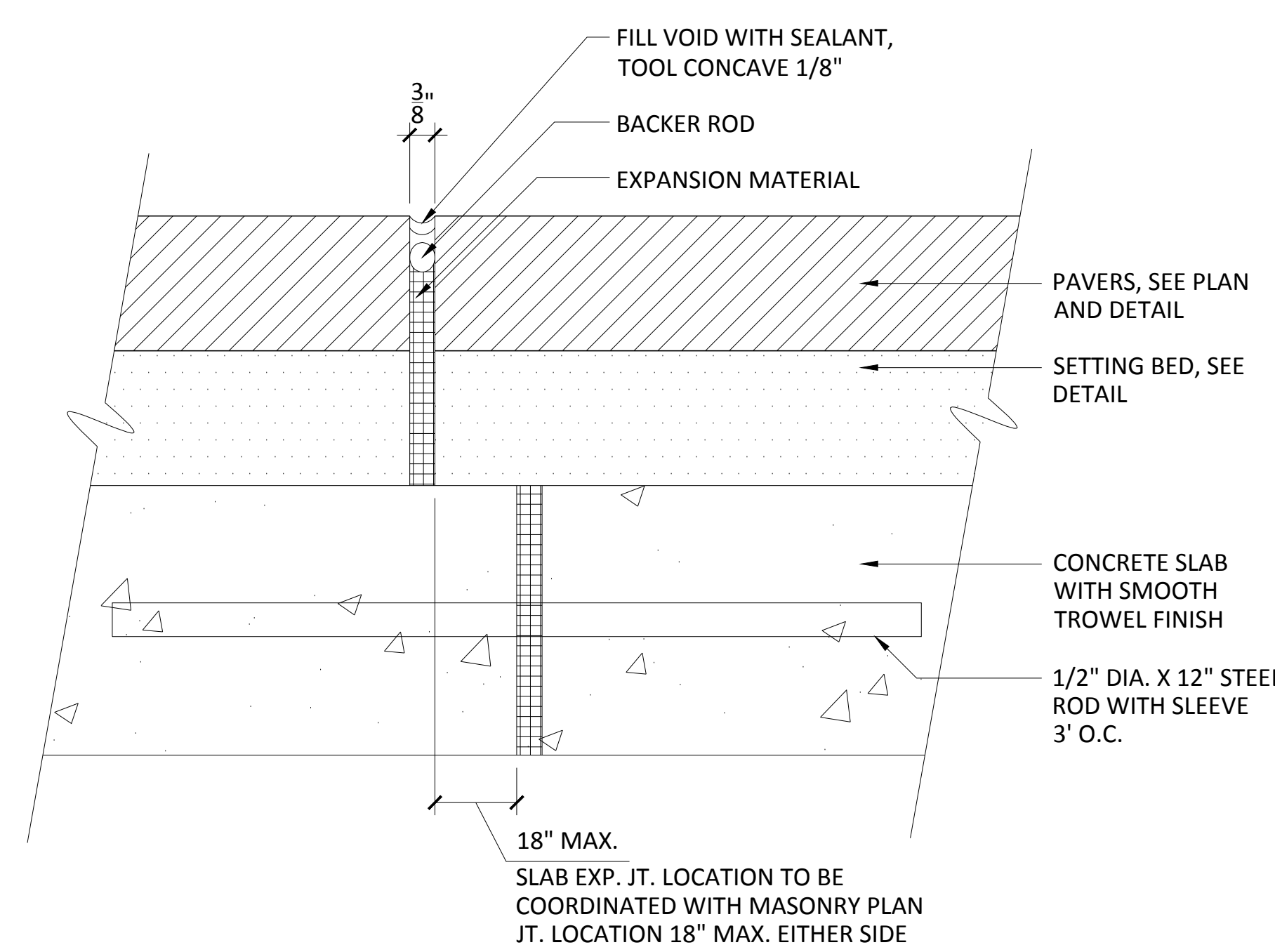
2  
L-930  
**CONCRETE PAVING EXPANSION JOINT**  
SCALE: 3" = 1'-0"



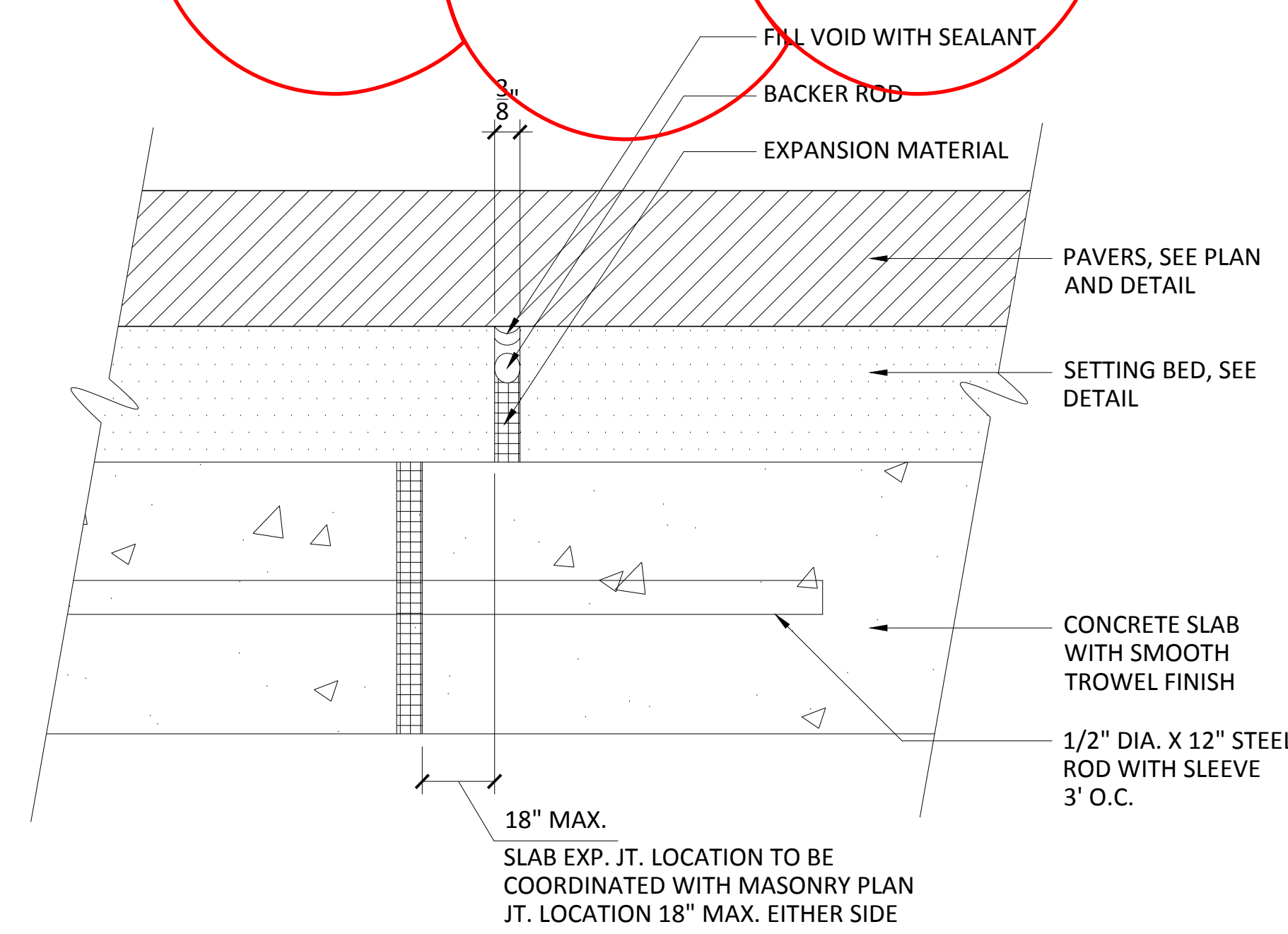
3  
L-930  
**FLEXI-PAVE BIKE PATH**  
SCALE: 1 1/2" = 1'-0"



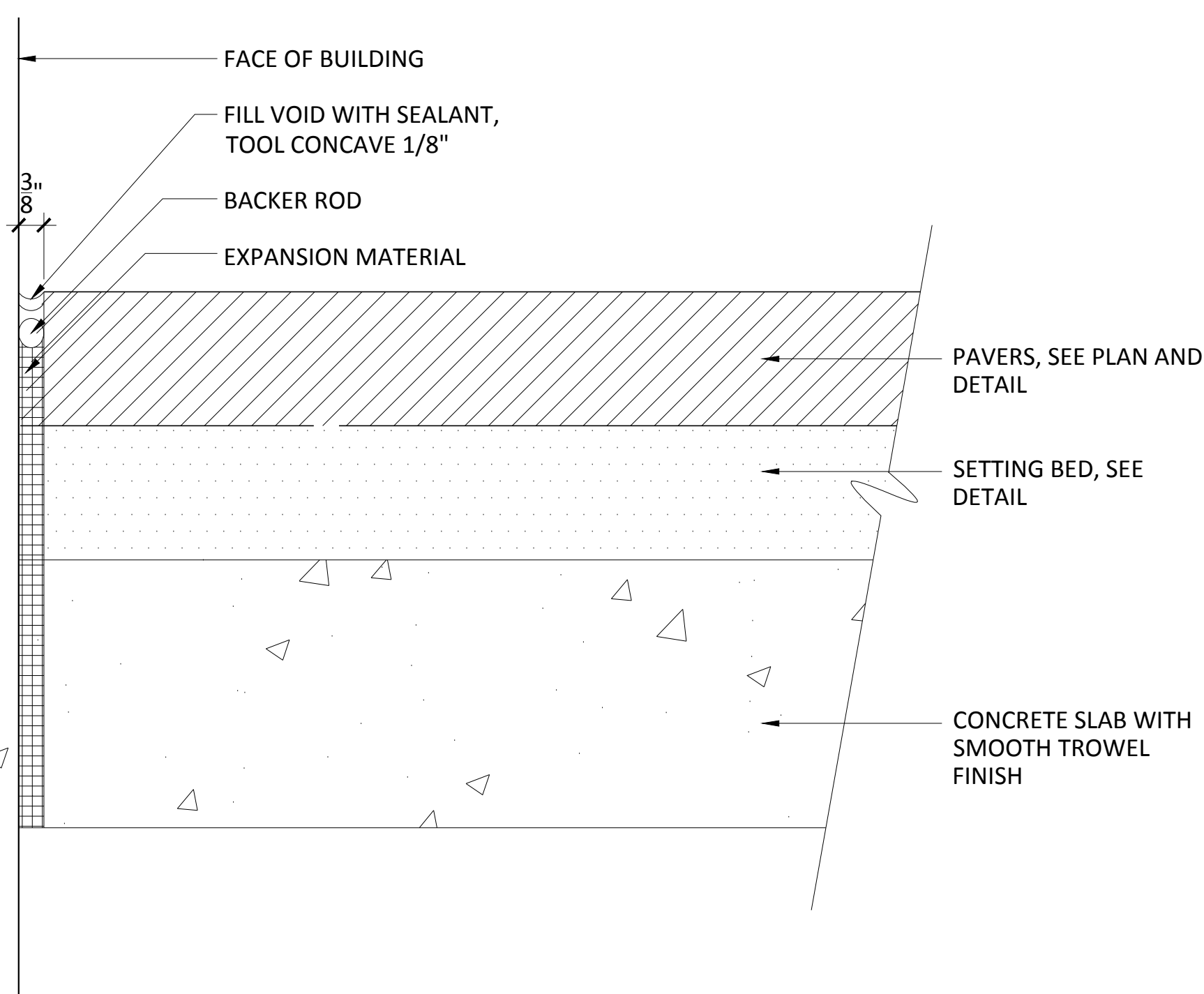
22  
L-930  
**CONCRETE UNIT PAVERS ON MORTAR SETTING BED**  
SCALE: 3" = 1'-0"



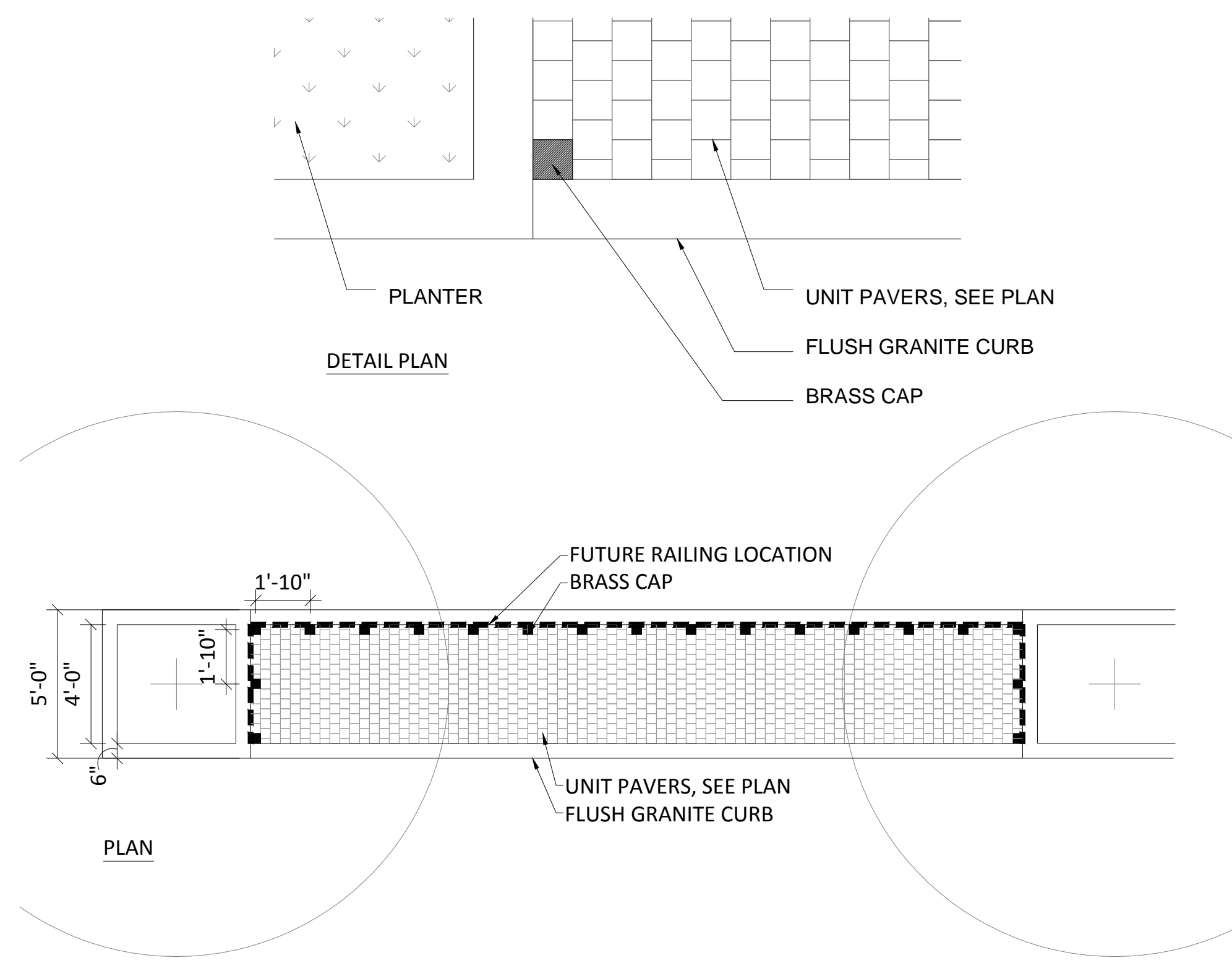
23  
L-930  
**PAVER EXPANSION JOINT TYPE A**  
SCALE: 6" = 1'-0"



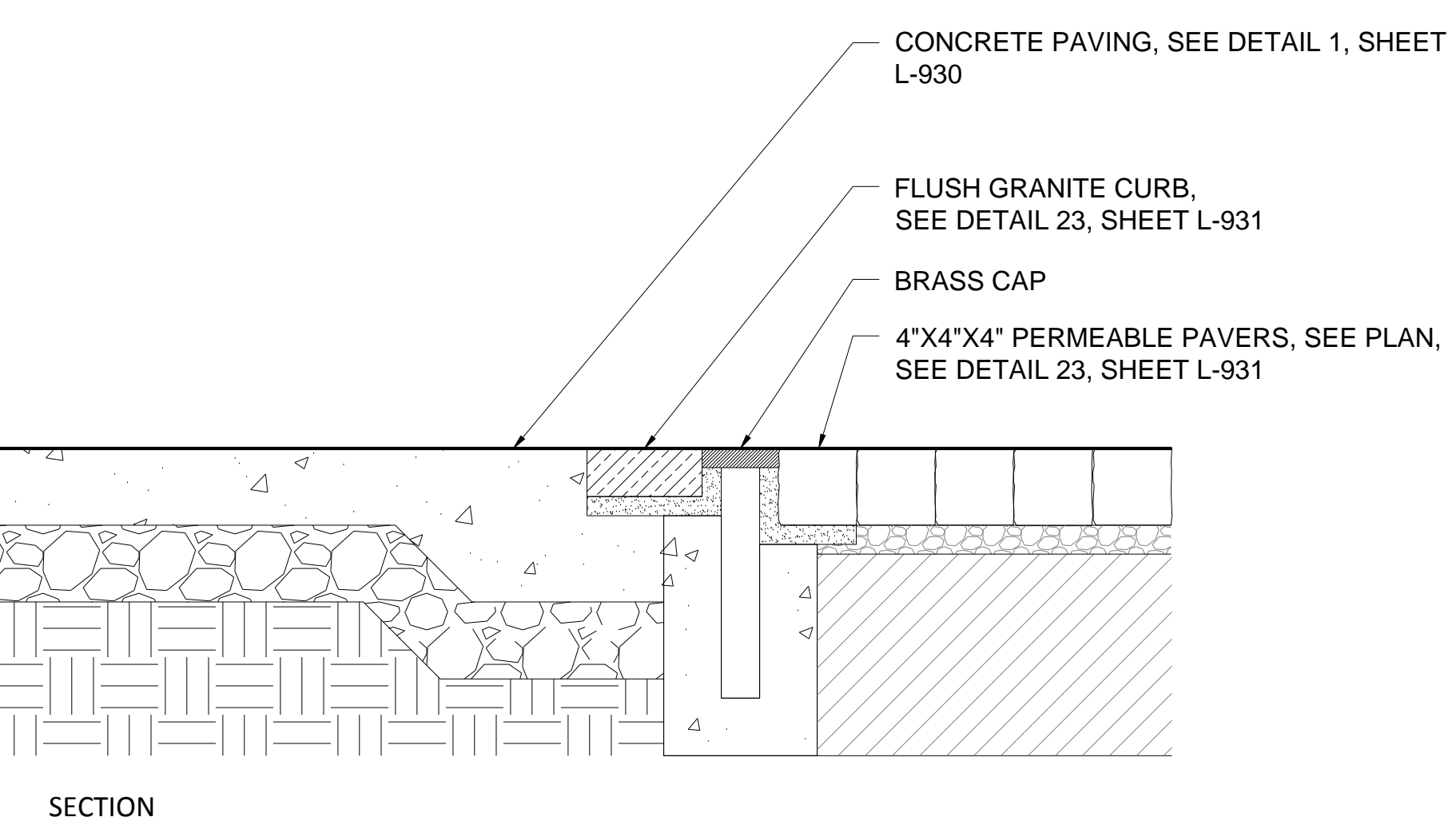
24  
L-930  
**PAVER EXPANSION JOINT TYPE B**  
SCALE: 6" = 1'-0"



33  
L-930  
**EXPANSION JOINT @ BUILDING EDGE**  
SCALE: 6" = 1'-0"



34  
L-930  
**RAIL FOOTING AT PERMAEABLE SIDEWALK PAVING**  
SCALE: PLAN: 1/4" = 1'-0", DETAIL PLAN: 1" = 1'-0", SECTION: 1 1/2" = 1'-0"



PROJECT KEY:

SUBMISSION	DATE
FTG PERMIT	1/25/2013
FTG PERMIT REVISION	TBD
HORIZONTAL PERMIT	TBD

NO. DATE DESCRIPTION

NO.	DATE	DESCRIPTION
1	1/8/2013	DRAFT

MAINE AVENUE  
HARDSCAPE  
DETAILS

DRAWING TITLE:

Author	SCALE:
DRAWN BY	45680.05.J
CHECKER	45680.05.J
CHECKED BY	PROJECT NO.
DATE:	1/25/2013
L-930	DRAWING NO.