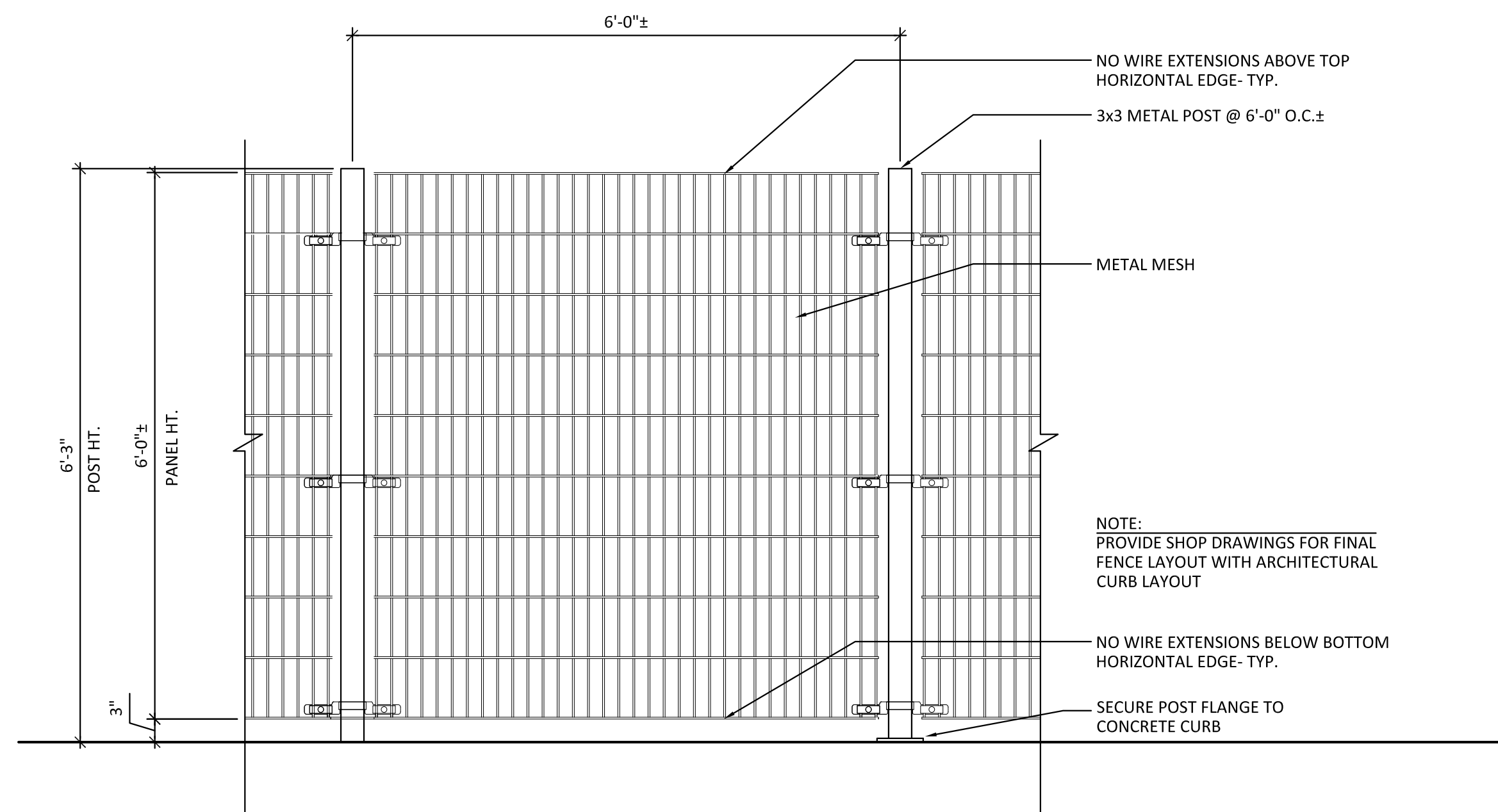
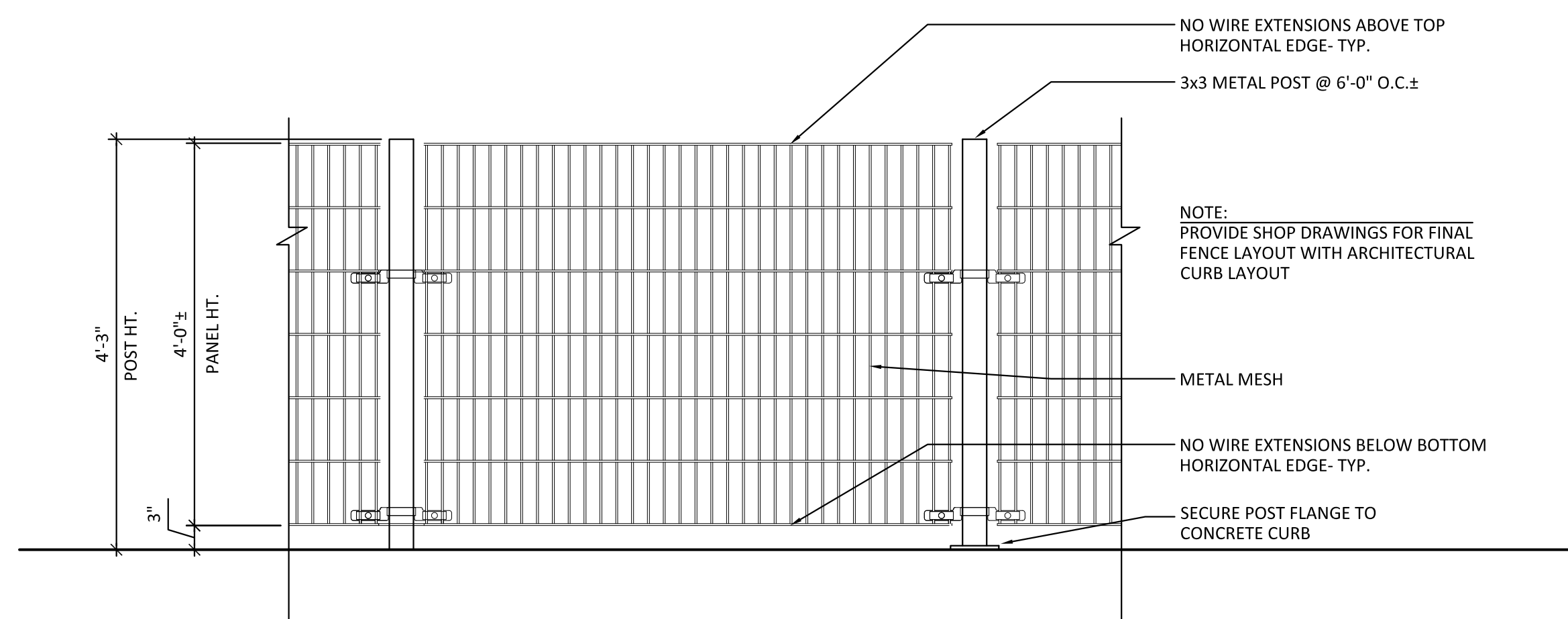


1 RECYCLED RUBBER AGGREGATE SURFACE @ LEVEL 5 DOG RUN
1'-1/2" = 1'-0"



2 6'-0" HT. METAL FENCE @ LEVEL 5 DOG RUN
3/4" = 1'-0"



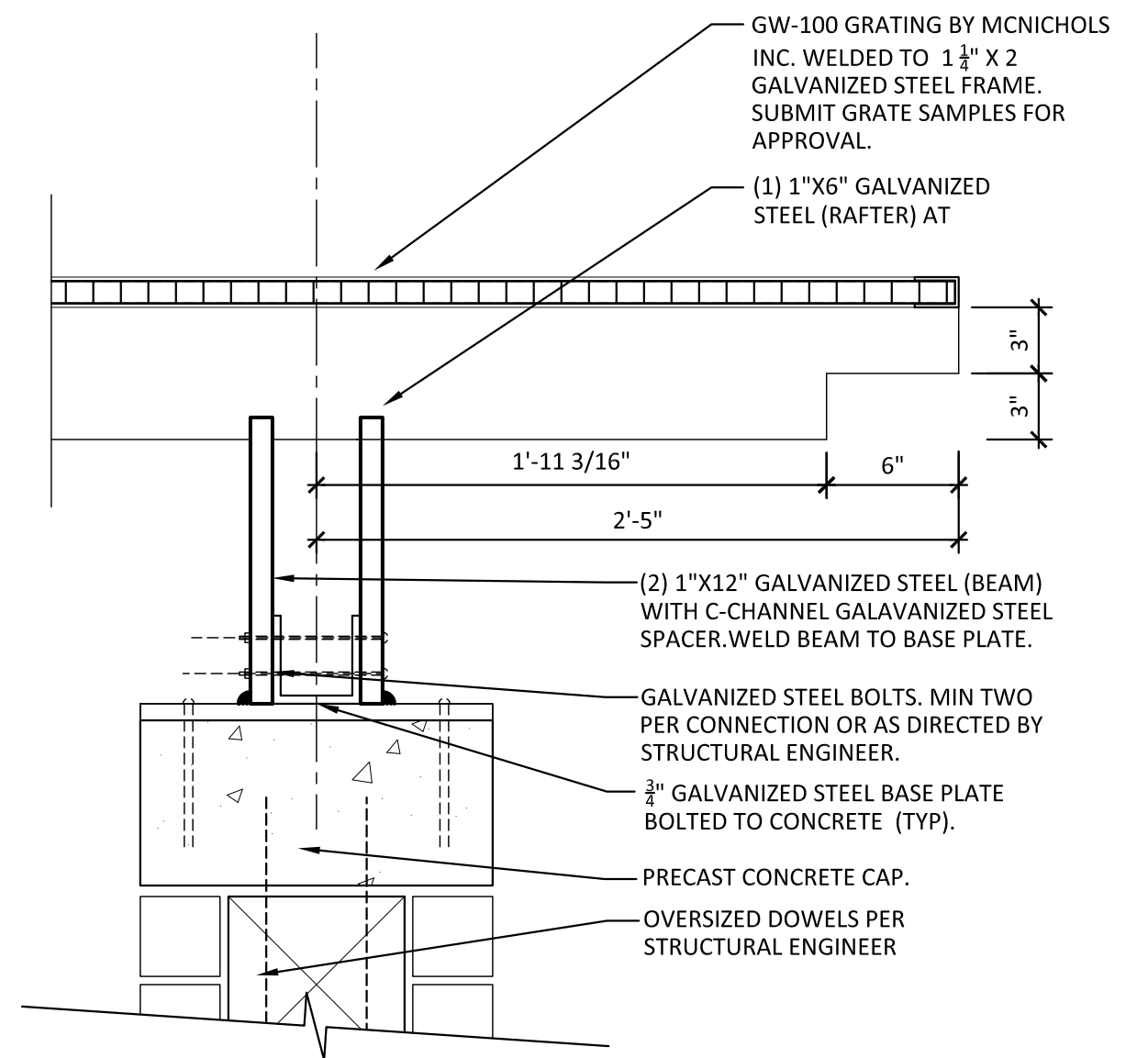
3 4'-3" HT. METAL FENCE @ LEVEL 5 DOG RUN
3/4" = 1'-0"



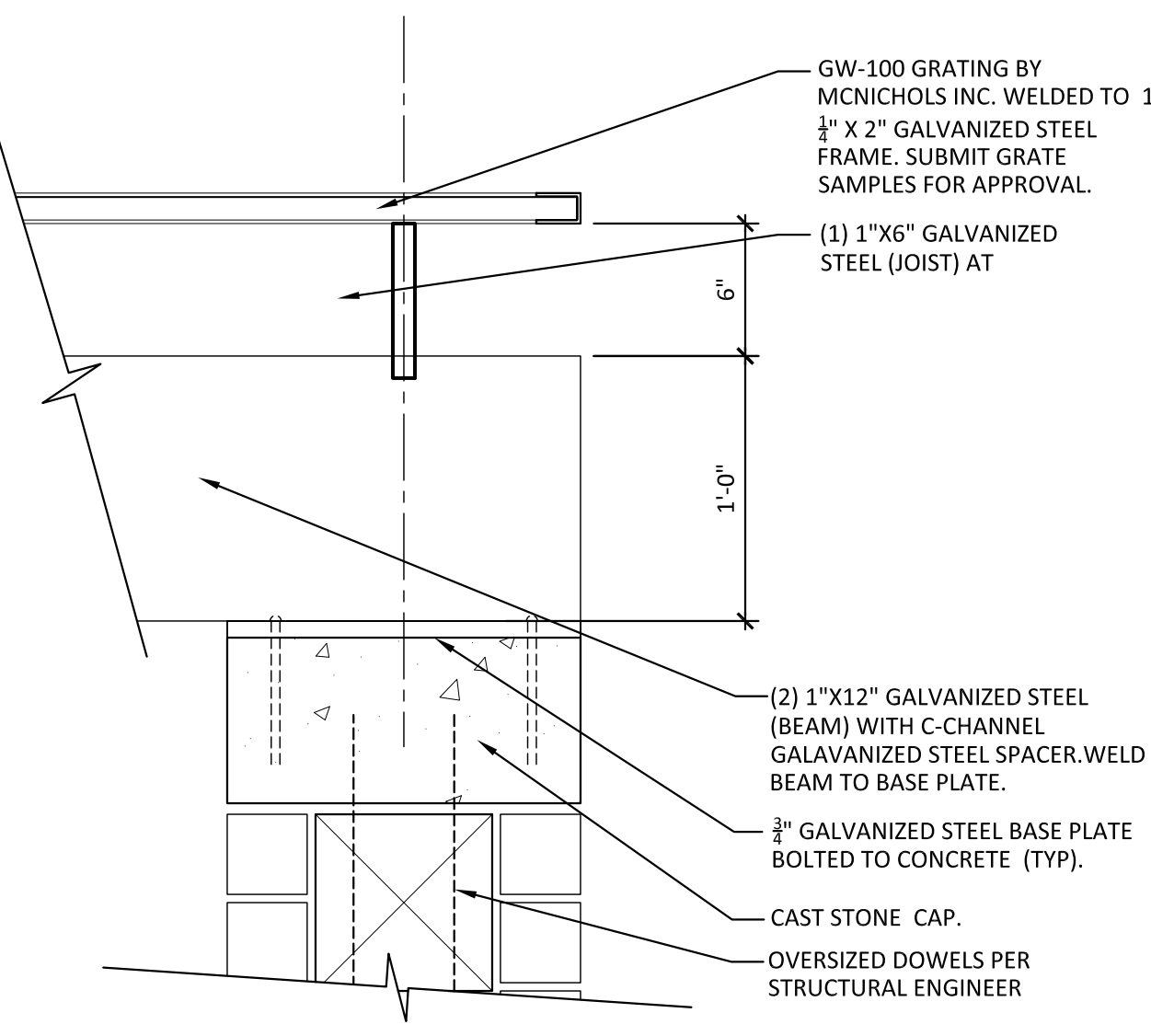
4 PLASTIC FIRE HYDRANT
NTS



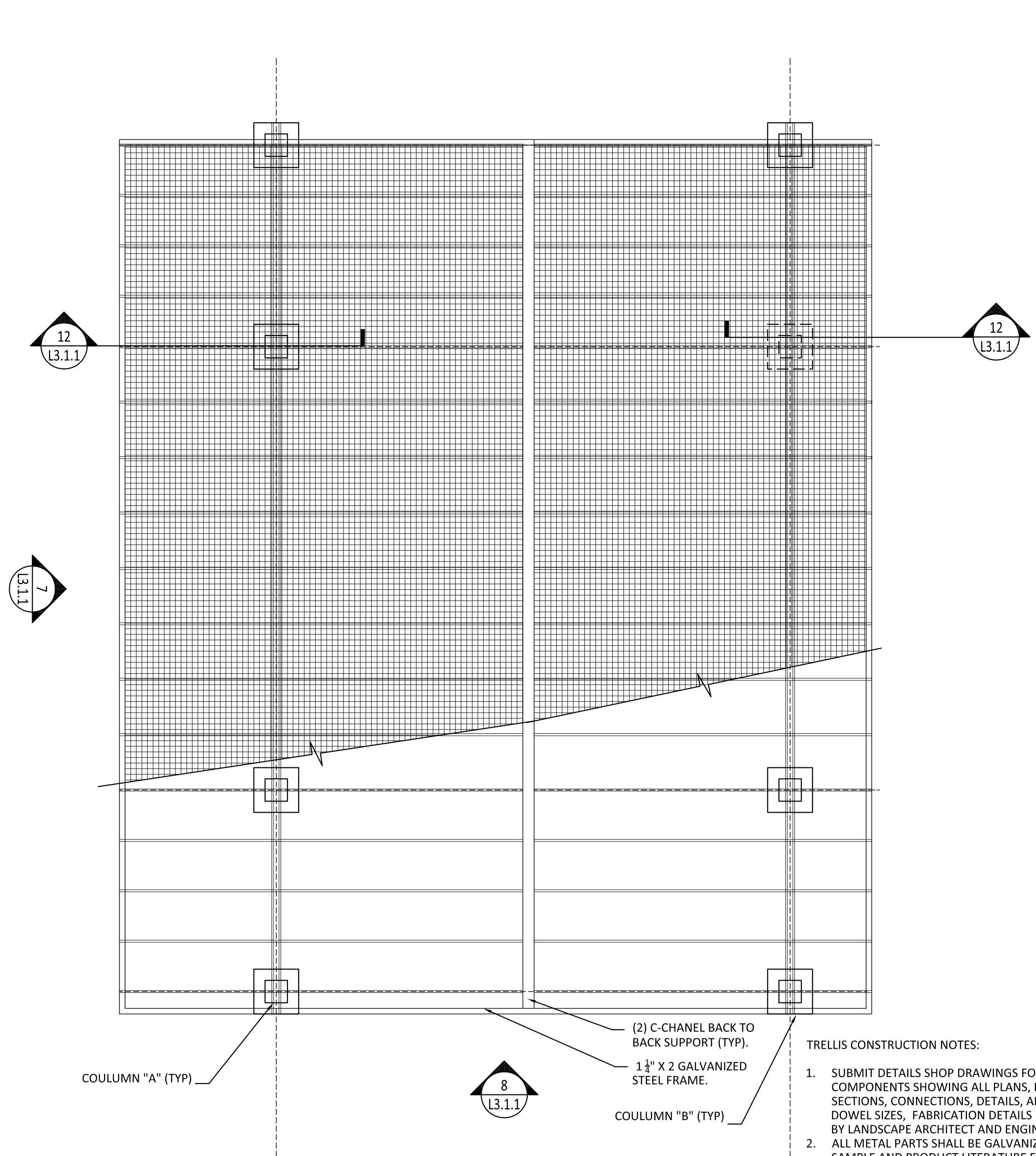
5 DOG DRINKING FOUNTAIN
NTS



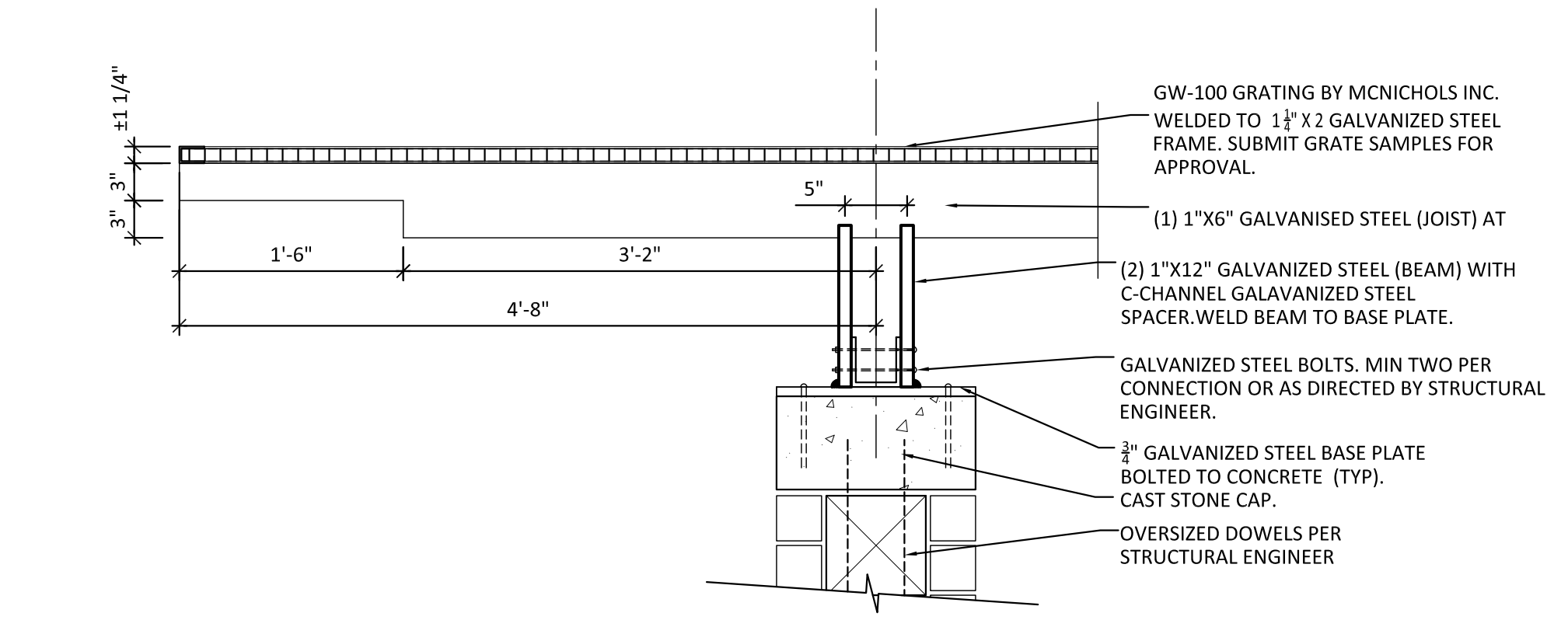
5.1 PERGOLA - END SECTION AT SIDEWALK SIDE
1'-1/2" = 1'-0"



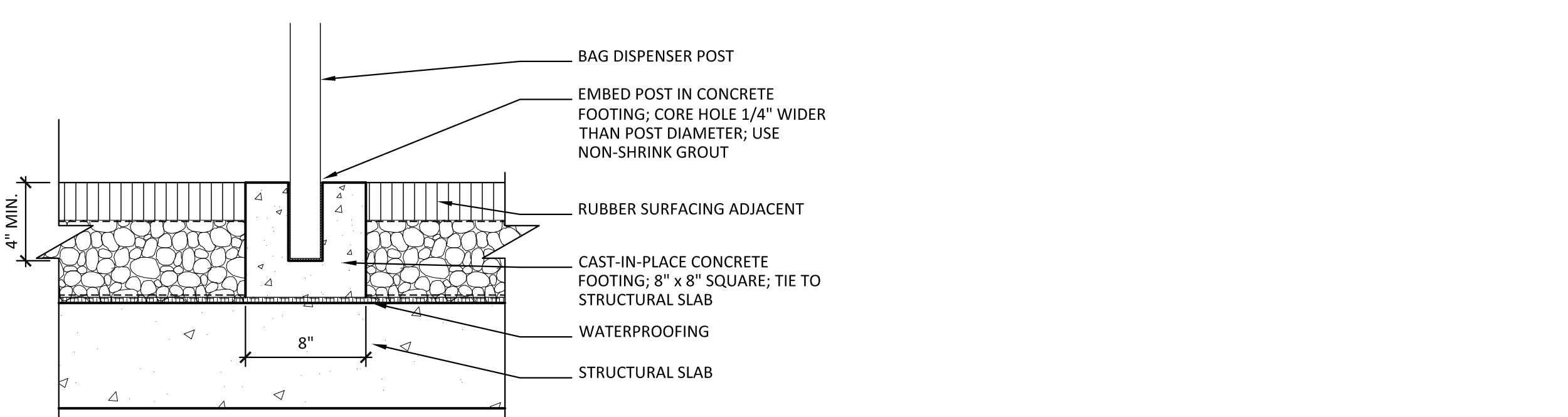
5.2 PERGOLA - END SECTION AT POOL DECK SIDE
1'-1/2" = 1'-0"



7 PERGOLA - PLAN
3/8" = 1'-0"



8 PERGOLA - END SECTION AT TERRACE SIDE
1" = 1'-0"



DOGIPOT
"The GREEN Solution to Dog Pollution."
www.DOGIPOT.com
800.364.7681

POLY DOGIPOT® PET STATION (ITEM #1010)
"The Clean Solution to Dog Pollution."
SPECIFICATION, INSTALLATION AND OPERATION SHEET

(A) DOGIPOT® PET SIGN (Item #1203 / 1204)
• H: 18" x W: 11.5"
• .063 gauge reflective aluminum
• Weight: 1.35 lbs.
• Forest green on white

(B) POLY DOGIPOT® JUNIOR BAG DISPENSER (Item #1007-2)
• H: 17" x W: 10" x D: 3"
• 2.5 mm ABS / PP forest green polyethylene
• Weight: 5 lbs.
• 400 bag capacity
• Two Diamond bag dispenser slots
• Bottom locking access tray / insert
• Clearly posted instructions

(C) POLY TRASH RECEPTACLE WITH LID (Item #1208-L)
• H: 21" x W: 13" x D: 12"
• 2.5 mm ABS / PP forest green polyethylene
• Weight: 4 lbs.
• 10 Gallon capacity
• Attachable hinged lid (Item #1210-N)
• One (1) box 50 Count OXO-BIODEGRADABLE DOGIPOT® Liner Trash Bags (Item #1404) included (5 lbs.)

(D) TELESCOPIC POLY MOUNTING POST (Item #1304)
• 2" x 2" x 8"
• 1.25 gauge fiberglass
• Weight: 8 lbs.

TOTAL HEIGHT FROM ABOVE GROUND:
• 67.5"

SPACE BETWEEN DISPENSER AND SIGN:
• 1.0"

SPACE BETWEEN RECEPTACLE AND DISPENSER:
• 11.5"

SPACE BETWEEN GROUND AND RECEPTACLE:
• 9.0"

HOLE:
• D: 18.0" x W: 8.0"
• Fill with 40 lbs. "ready to use" cement

TOTAL SHIP WEIGHT: 36 LBS. (MOUNTING HARDWARE INCLUDED)

6 COMBINATION PET WASTE BAG DISPENSER & TRASH RECEPTACLE
NTS

hord | coplan | macht

ARCHITECTURE
LANDSCAPE ARCHITECTURE
PLANNING
INTERIOR DESIGN

750 East Pratt Street Suite 1100
Baltimore MD 21202
410-837-7311
410-837-6530 Fax
www.hcm2.com

CONSULTANTS

Civil
Vika, Inc.
20251 Century Blvd.
Suite 400
Germantown, MD 20874
301-916-4100
301-916-2262 FAX
www.vika.com

MEP

Century Engineering, Inc.
10710 Gilroy Road
Hunt Valley, MD 21031
443-589-2400
443-589-2401
www.centuryeng.com

Structural

Tadger-Cohen-Edelson
1109 Spring St., 5th Floor
Silver Spring, MD 20910
301-587-1820
301-588-1966 FAX
www.tadgerco.com

RECEIVED
By Foulger-Pratt Contracting, LLC at 9:36 am, Feb 08, 2012

REVISIONS
SHEET TITLE
HARDSCAPE CONSTRUCTION
DETAILS -
ROOFTOP DOG RUN

SCALE DATE PROJ#
As Indicated 02.06.2012 208124.20

PROJECT PHASE
BULLETIN 4 -
ISSUED FOR CONSTRUCTION

DRAWING #

L3.1.2
© 2012 Hord Coplan & Macht Inc.