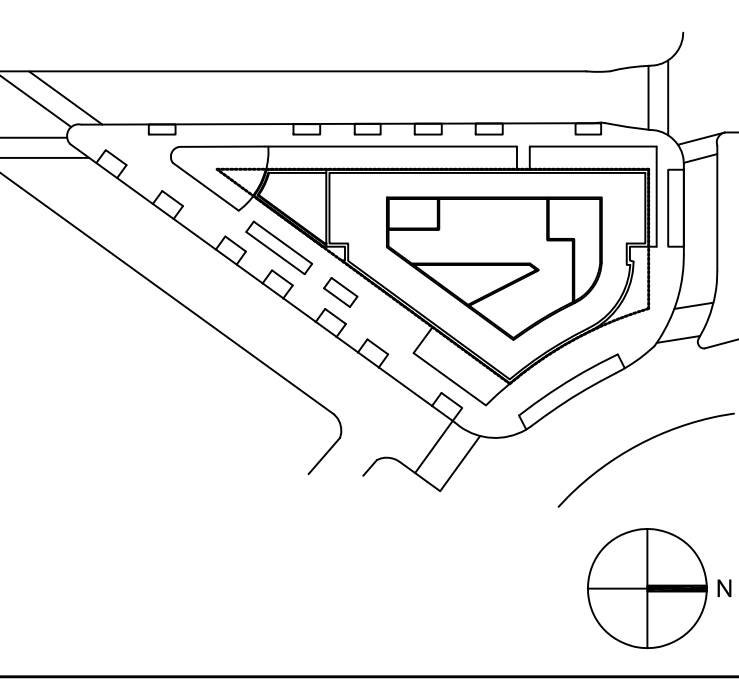


**PAYETTE**

<b>Design Architect / Landscape Architect</b> Architect of Record Payette Associates Inc. 290 Congress Street, Fifth Floor Boston, MA 02210-1005 Tel: 617-895-1000 Fax: 617-895-1002	<b>Associate Architect</b> Ayers / Saint / Gross Architects 800 Eye Street, NW Suite 600 Washington, DC 20001 Tel: 202.628.1033 Fax: 202.628.1034	<b>MEP/FP Engineer</b> Affiliated Engineers Inc. Metro DC 401 N. Washington Street Suite 400 Rockville, MD 20850 Tel: 301.468.7766 Fax: 301.468.7787	<b>Structural Engineer</b> Tadjer Cohen Edelson Assoc. 1109 Spring Street Silver Spring, MD 20910 Tel: 301.587.1920 Fax: 301.588.1966	<b>Civil/Site Engineer</b> Willes Mensch Corporation 11860 Sunrise Valley Drive Suite 200 Reston, VA 20191 Tel: 703.391.7800 Fax: 703.264.0595	<b>LEED Consultant</b> S.D. Kuppler & Associates, LLC 51 Monroe Street, Suite 402 Rockville, MD 20850 Tel: 240-403-0779 Fax: 425-977-8115
<b>Lighting Designer</b> Atelier Ten 195 Church Street Suite 10c New Haven, CT 06510 Tel: 203.777.1400 Fax: 203.773.1902	<b>Elevator Consultant</b> Zipf Associates, Inc. 1220 North Fillmore St Suite 360 Arlington, VA 22201 Tel: 703.243.6301 Fax: 703.243.6304	<b>Acoustical / Audiovisual</b> Shan Milson Witke 1220 North Fillmore St Suite 360 Arlington, VA 22201 Tel: 703.243.6301 Fax: 703.243.6304	<b>Code Consultant</b> Rolf Jensen Associates 14502 Greenview Drive Suite 500 Laurel, MD 20708 Tel: 301.490.3901 Fax: 301.490.3901	<b>Fire Protection Consultant</b> RVM Sullivan Engineering 529 Main Street Suite 203 Boston, MA 02129 Tel: 617-523-8227 Fax: 617-523-8016	

**SCHOOL OF PUBLIC HEALTH AND HEALTH SERVICES**  
**THE GEORGE WASHINGTON UNIVERSITY, WASHINGTON DC**  
**CONSTRUCTION DOCUMENTS**



Revisions	Number	Date	Description
1	05/07/12	Gulheim.1	

**THE GEORGE WASHINGTON UNIVERSITY**  
 WASHINGTON DC  
 Drawing Scale: AS NOTED  
 Project Number: 11950.20  
 Date Issued: 02/02/2012

**SITE DETAILS**  
**L5.20**