

**STONE SCHEDULE**

STONE TYPE	LOCATION	MATERIAL	FINISH	JOINT SIZE	THICKNESS	DIMENSION	NOTES
A	Rear Porch	Cushwa Shenandoah 115	Sand Molded	3/8" max.	---	7 1/8" x 3 3/8" x 2 1/4"	Refer to detail 1/LK-2
B	Rear Porch	Greyfleck Pewter	Thermal	3/8" max.	1/4"	2'-6" x 1'-5 3/8"	Refer to Arch. Dwg.
C	Rear Porch	Greyfleck Pewter	Thermal	3/8" max.	2"	3'-6 3/8" x 1'-4 1/8"	Refer to Arch. Dwg.
D	Rear Porch	Greyfleck Pewter	Thermal	3/8" max.	2"	4'-1 1/8" x 1'-4 7/8"	Refer to Arch. Dwg.
E	Rear Porch	Greyfleck Pewter	Thermal	3/8" max.	2"	4'-0 3/4" x 1'-1"	Refer to Arch. Dwg.
F	Rear Porch	Greyfleck Pewter	Thermal	3/8" max.	1/4"	2'-11 1/4" x 1'-5 3/8"	Refer to Arch. Dwg.
G	Rear Porch	Greyfleck Pewter	Thermal	3/8" max.	1/4"	3'-6 3/8" x 1'-5 3/8"	Refer to Arch. Dwg.
H	Rear Porch	Greyfleck Pewter	Thermal	3/8" max.	2"	3'-6 1/2" x 1'-5 3/8"	Refer to Arch. Dwg.
J	Rear Porch	Greyfleck Pewter	Thermal	3/8" max.	2"	3'-6 3/8" x 1'-1"	Refer to Arch. Dwg.
K	Rear Porch	Greyfleck Pewter	Thermal	3/8" max.	2"	4'-1 1/8" x 1'-1"	Refer to Arch. Dwg.
L	Rear Porch	Greyfleck Pewter	Thermal	3/8" max.	2"	3'-6 1/2" x 1'-1"	Refer to Arch. Dwg.
M	Rear Porch	Greyfleck Pewter	Thermal	3/8" max.	1/4"	2'-10 3/4" x 1'-5"	Refer to Arch. Dwg.
N	Rear Porch	Greyfleck Pewter	Thermal	3/8" max.	3"	3'-6 3/8" x 2'-2"	Refer to Arch. Dwg.
P	Rear Porch	Greyfleck Pewter	Thermal	3/8" max.	3"	2'-10 3/4" x 1'-4 1/2"	Refer to Arch. Dwg.
Q	BBQ	Greyfleck Pewter	Thermal	3/8" max.	3"	3'-5 1/4" x 2'-6"	Refer to page LK-3
R	BBQ	Greyfleck Pewter	Thermal	3/8" max.	3"	2'-8 3/8" x 1'-3/4"	Refer to page LK-3
S	BBQ	Greyfleck Pewter	Thermal	3/8" max.	3"	2'-6 3/8" x 2'-6"	Refer to page LK-3
T	Pavement	Arentz Tennessee Majestic	Refer to note below	3/8" max.	2" typ. - 3" max.	3'-0" x 1'-6"	Refer to detail 1/LK-1
U	Pool Coping	Arentz Tennessee Majestic	Refer to note below	3/8" max.	3"	3'-0" x 1'-6"	Refer to detail 1/LJ-3
V	Pool Coping	Arentz Tennessee Majestic	Refer to note below	3/8" max.	3"	3'-6" x 1'-6"	Refer to detail 5 and 6 on page LJ-3
W	Pavement	Arentz Tennessee Majestic	Refer to note below	3/8" max.	2" typ. - 3" max.	3'-0" x 2'-4"	Refer to detail 1/LK-1

\*\* NOTE: ALL STONE DIMENSIONS LISTED ABOVE ARE MEASURED TO THE CENTER OF JOINT. JOINT EDGES OF STONE WILL BE SAWN AND NOT SNAPPED. STONE SUPPLIER'S SHOP DRAWINGS ARE TO INCORPORATE JOINT SIZE INTO FINAL STONE DIMENSION.

ARENZ TENNESSEE MAJESTIC STONE TO BE SNAPPED AND TUMBLED. COLORS TO BE GREY/SILVER, GOLD, AND TAN (NO DARK BROWN, RUST, OR DEEP BLUE). CLEFTING ON PAVEMENT SHALL BE MAXIMUM OF 1/8" AND KEPT TO A MINIMUM. SMOOTH WEATHERED STONES ARE PREFERRED TO ALLOW FOR PROPER DRAINAGE.

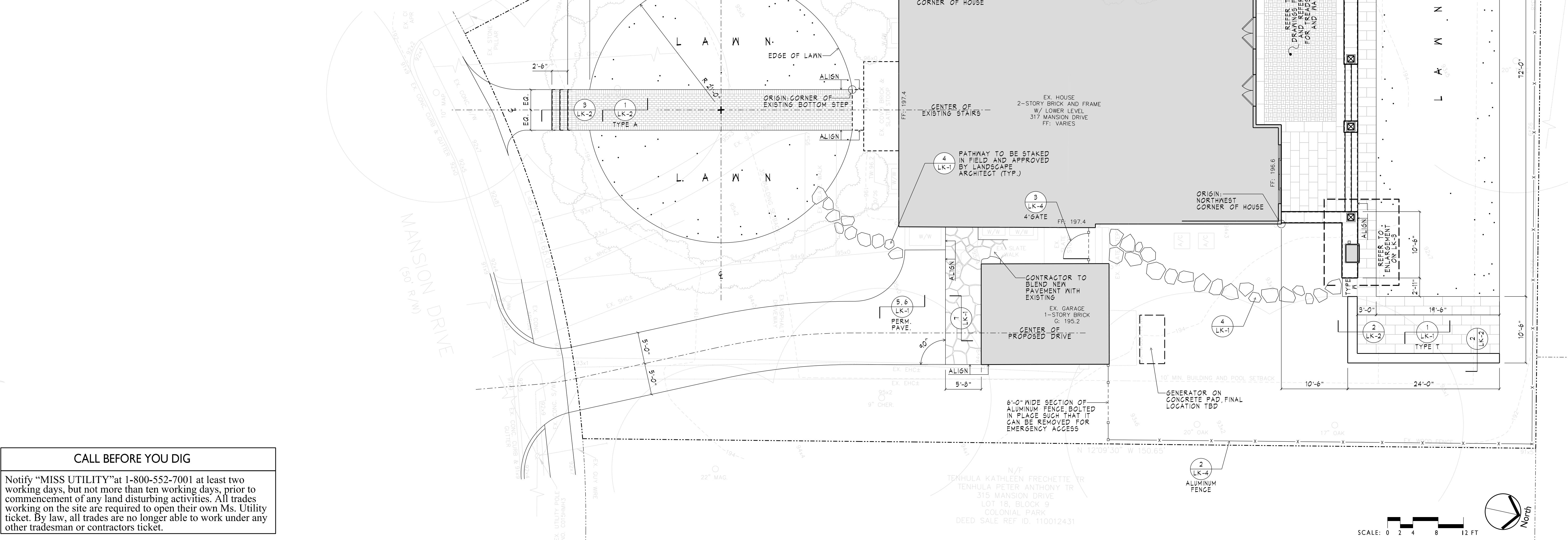
MAJESTIC STONE INC.  
CONTACT: DAVID ZOLLINGER  
OFFICE: (423) 715-1901  
CELL: (423) 715-2019

**JOINT MATERIAL:**

GREYFLECK PEWTER LIMESTONE JOINTS TO BE POINTED WITH TYPE S BRICK LOCK WITH LIGHT COLORED SAND. JOINT COLOR TO MATCH/BLEND WITH STONE. MASON TO INSTALL A SAMPLE FOR LANDSCAPE ARCHITECT TO APPROVE PRIOR TO POINTING ENTIRE AREA.

CUSHWA SHENANDOAH 115 BRICK JOINTS TO BE POINTED WITH FLAMINGO-BRIXMENT G-13. MASON TO INSTALL SAMPLE FOR LANDSCAPE ARCHITECT TO APPROVE PRIOR TO POINTING ENTIRE AREA.

NOTE:  
REFER TO GENERAL MASONRY NOTED ON LK-1



**CALL BEFORE YOU DIG**

Notify "MISS UTILITY" at 1-800-552-7001 at least two working days, but not more than ten working days, prior to commencement of any land disturbing activities. All trades working on the site are required to open their own Ms. Utility ticket. By law, all trades are no longer able to work under any other tradesman or contractors ticket.

This drawing and the design shown are the property of Arentz Landscape Architects, LLC. The reproduction, copying, or other use of this drawing without the landscape architect's written consent is prohibited and any infringement will be subject to legal action.  
© 2013 ARENTZ LANDSCAPE ARCHITECTS LLC

**arentz**  
LANDSCAPE ARCHITECTS, LLC  
1400 SHILOH ROAD, HARRISBURG, VIRGINIA 22111  
TEL: 540.834.4200 FAX: 540.341.4222 WWW.ARENTZ.COM

**BROWN RESIDENCE**  
317 MANSION DRIVE  
ALEXANDRIA, VIRGINIA 22302

ISSUE DATE: 06-28-2013

LAYOUT AND MATERIALS PLAN

**LC-1**  
JOB NO. 1235  
SCALE: 1/8" = 1'-0"

**BID SET**

