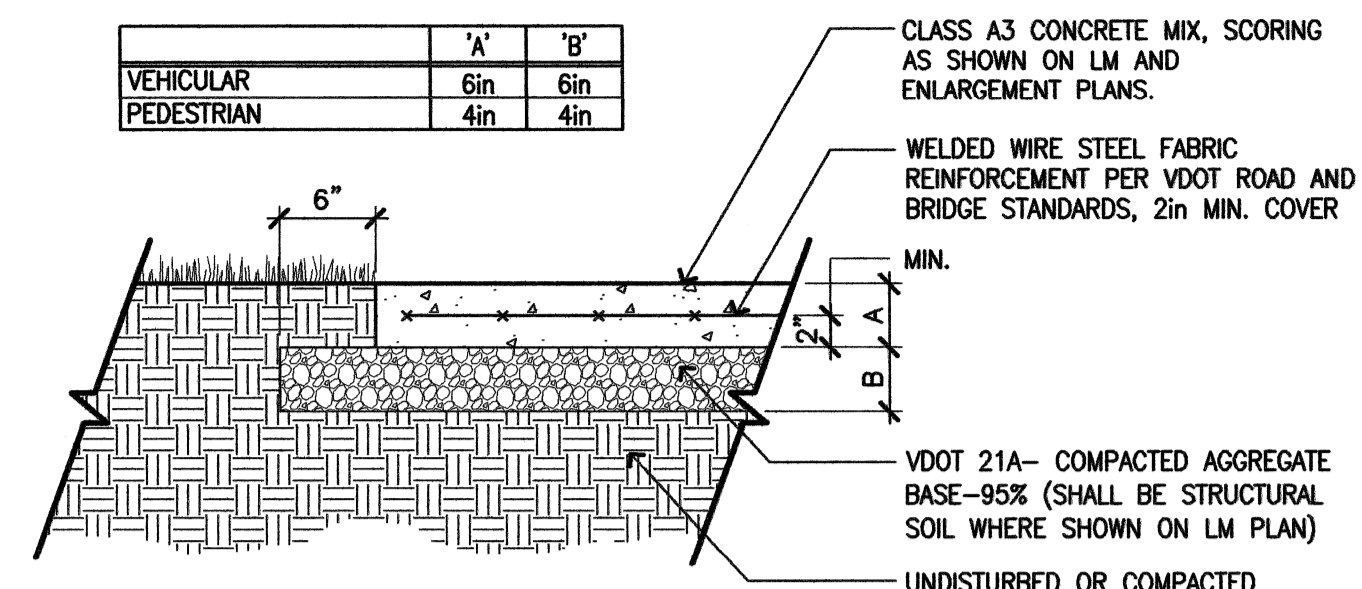
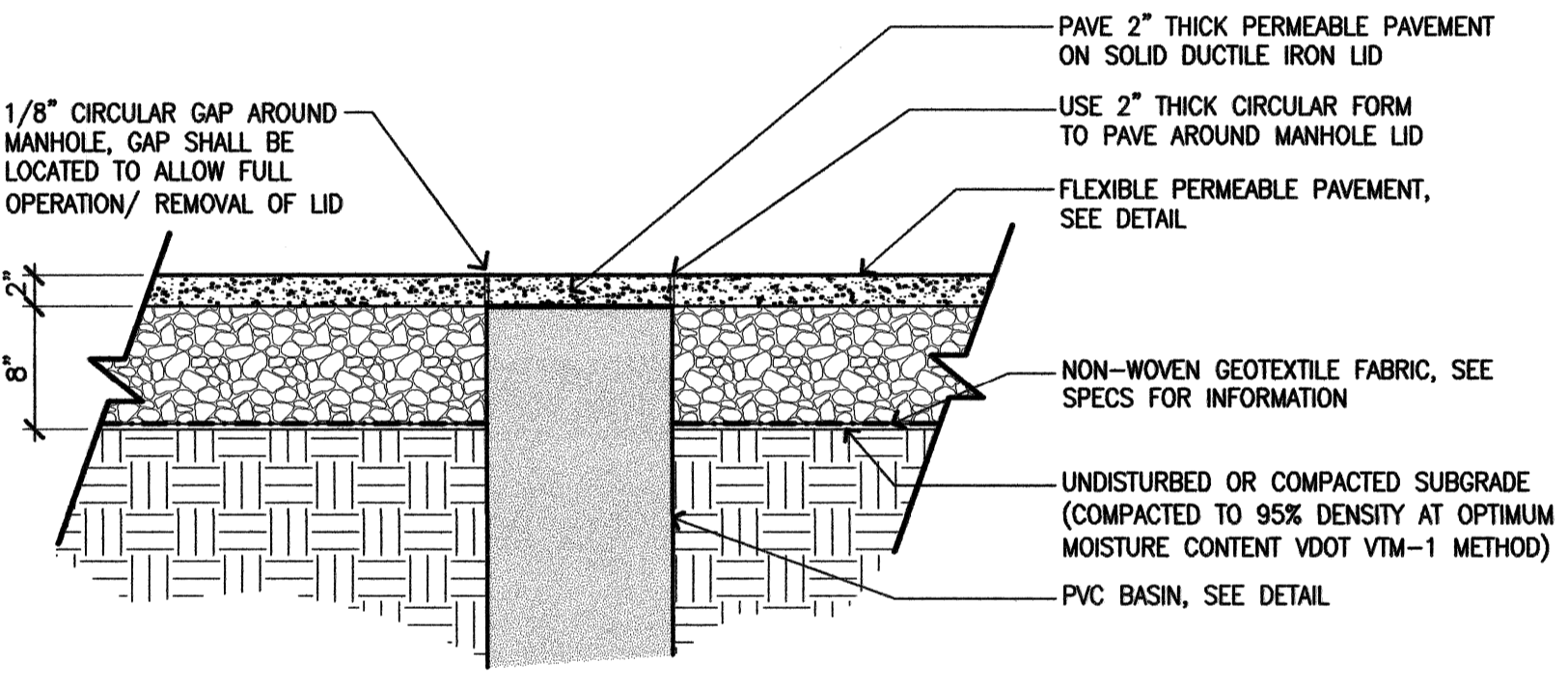


	'A'	'B'
VEHICULAR	6in	6in
PEDESTRIAN	4in	4in

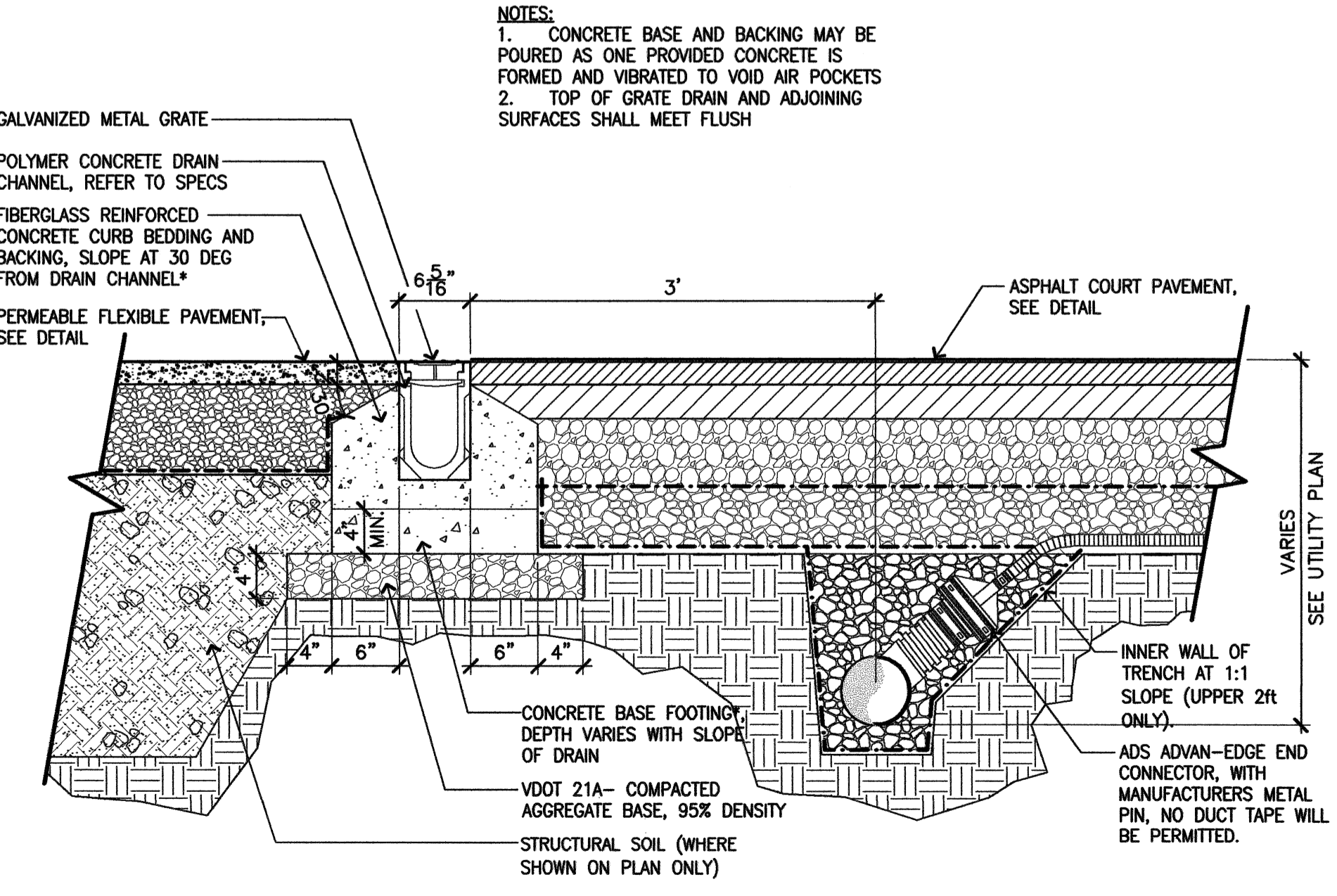


- NOTES:**
1. PROVIDE SAWCUT CONTROL JOINTS AS SHOWN ON THE LAYOUT PLAN
 2. REFER TO LAYOUT PLAN AND CONSTRUCTION DETAILS FOR LOCATIONS OF EXPANSION JOINTS. REFER TO SPECS FOR MATERIAL AND TYPE.
 3. FINISH IN ACCORDANCE WITH VDOT 404.07, SIDEWALK FINISH
 4. ALL CONCRETE PAVEMENT WITHIN COUNTY R.O.W. SHALL BE CONSTRUCTED PER ARLINGTON COUNTY STANDARDS, WITH JOINTING AS SHOWN ON LAYOUT PLAN.

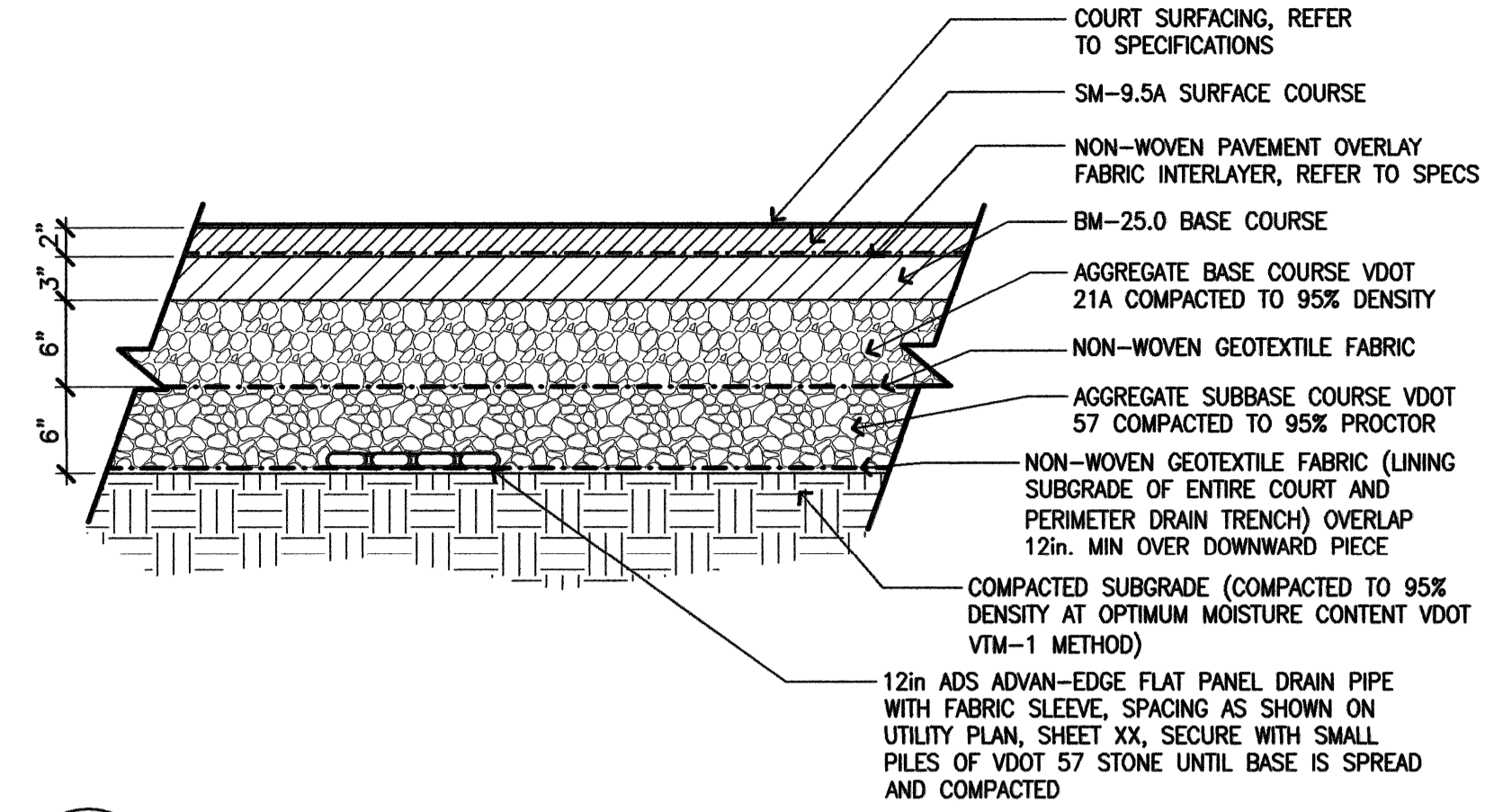
A CONCRETE PAVEMENT
SCALE: 1" = 1'-0"



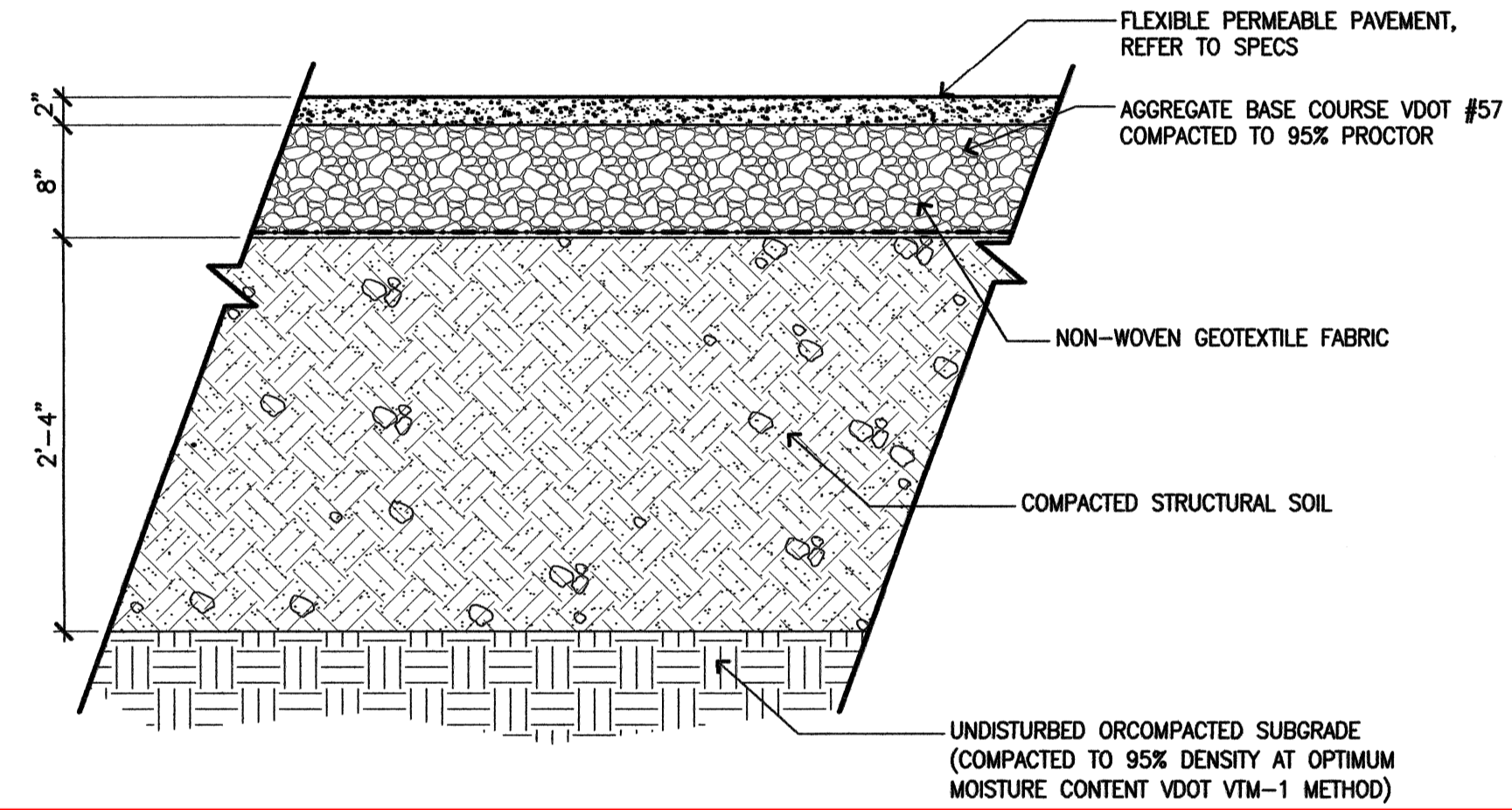
D MANHOLE AT PERMEABLE PAVEMENT
SCALE: 1" = 1'-0"



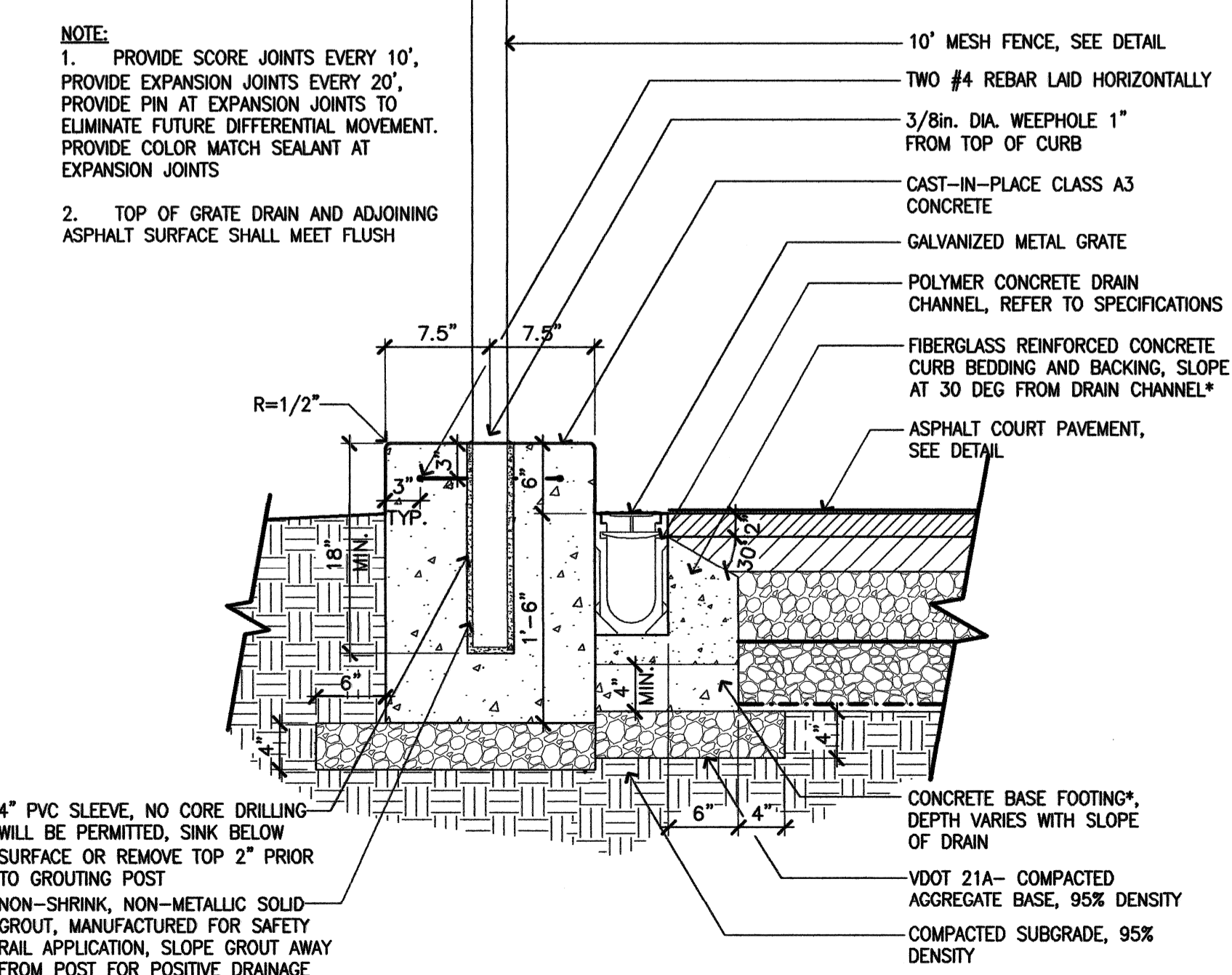
G CHANNEL DRAIN AT BASKETBALL COURT
SCALE: 1" = 1'-0"



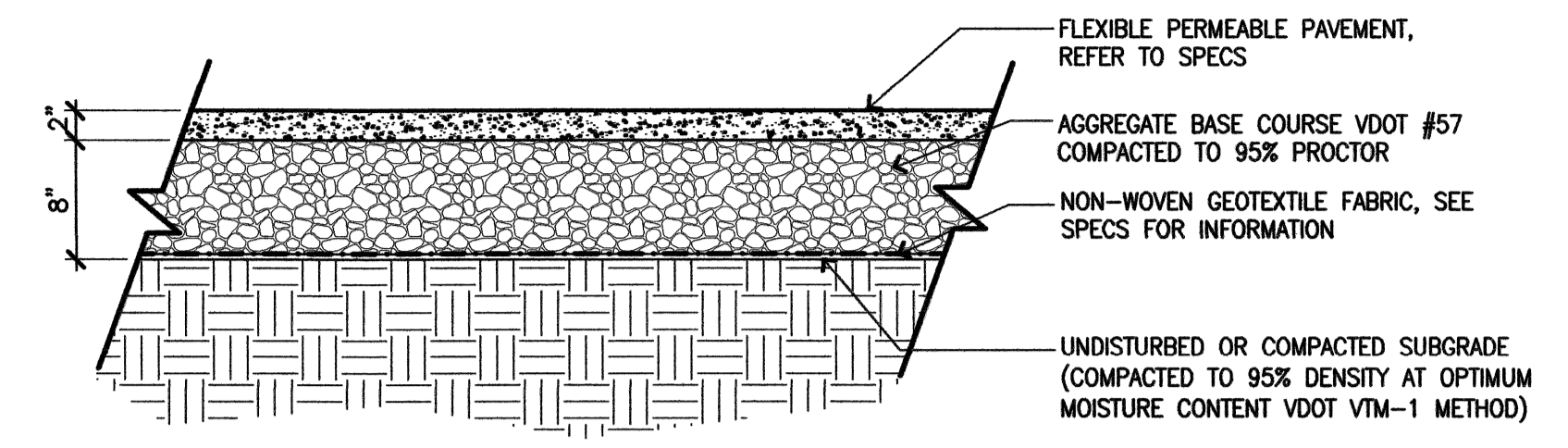
B ASPHALT COURT PAVEMENT
SCALE: 1" = 1'-0"



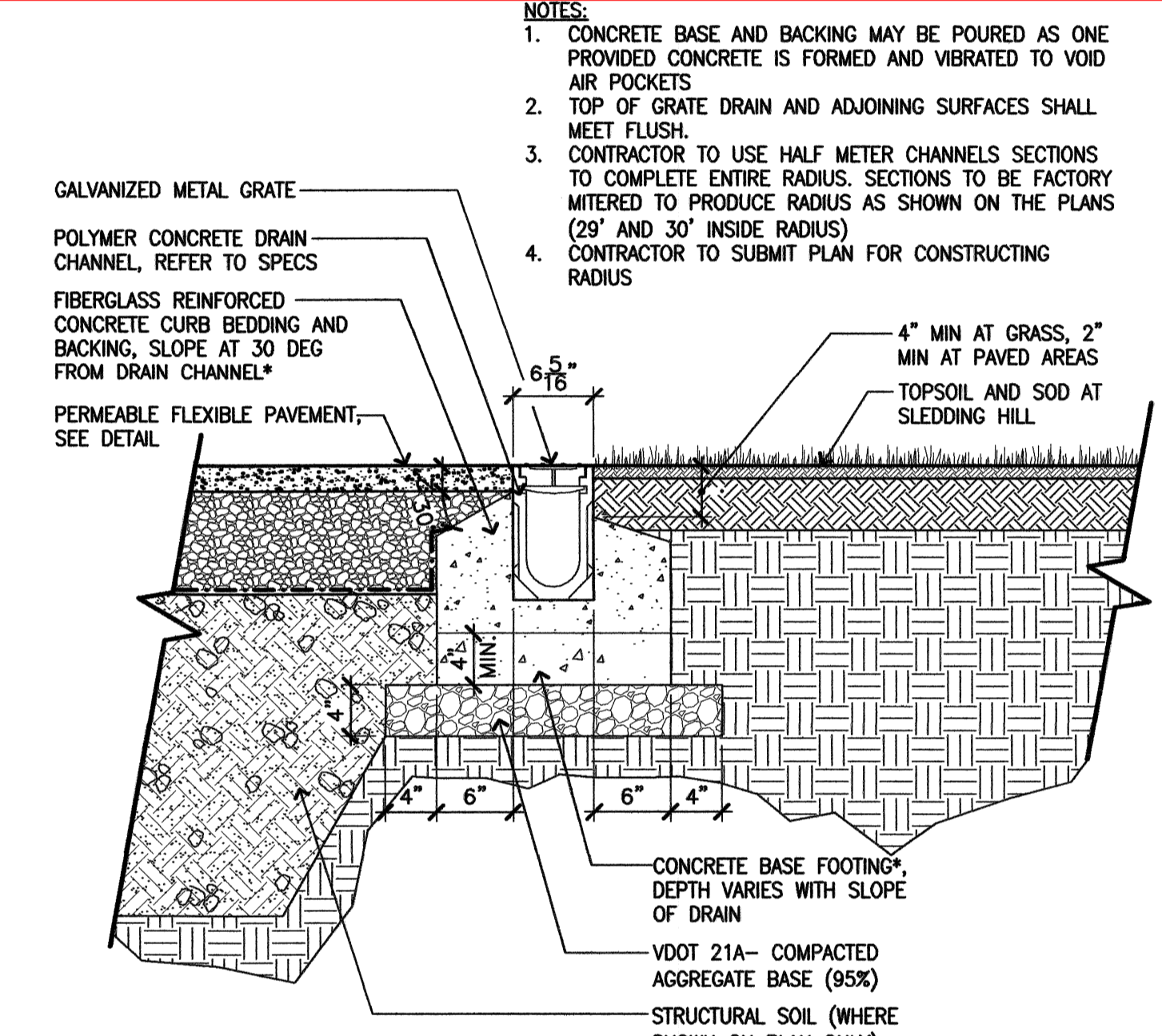
E PERM. FLEXIBLE PAVEMENT ON STRUCTURAL SOIL
SCALE: 1" = 1'-0"



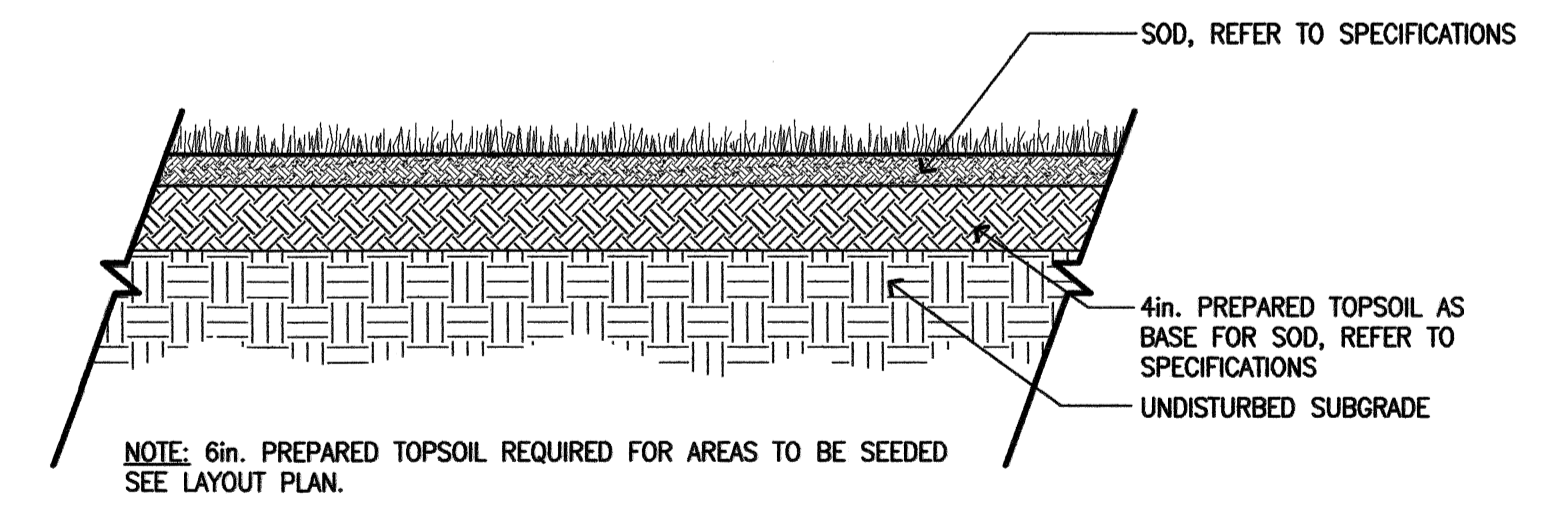
H RAISED CURB/ CHANNEL DRAIN AT BASKETBALL COURT
SCALE: 1" = 1'-0"



C PERMEABLE FLEXIBLE PAVEMENT
SCALE: 1" = 1'-0"



F CHANNEL DRAIN AT GRASS AREA
SCALE: 1" = 1'-0"



I TOPSOIL AND SOD
SCALE: 1" = 1'-0"

ARLINGTON COUNTY, VIRGINIA
DEPARTMENT OF ENVIRONMENTAL SERVICES

SITE DETAILS I

SCALE:	DESIGNED:	CHECKED: COVER
SUBMITTED DATE:	APPROVED DATE:	APPROVED DATE:
	CHIEF TRANSP. PLANNING BUREAU	CHIEF TRANSP. ENGINEERING BUREAU
APPROVED DATE:	APPROVED DATE:	APPROVED DATE:
CHIEF WATER, SEWER, & STR. BUREAU	CHIEF ENGINEERING BUREAU	DIRECTOR OF ENV. SERVICES
	SHEET	CONTRACT H-SHEET OF



- [Signature]* 7/31/12
DEPARTMENT DIRECTOR
- [Signature]* 7/31/12
PLANNING AND DESIGN DIVISION CHIEF
- [Signature]* 7/31/12
DESIGN TEAM SUPERVISOR
- [Signature]* 7/31/12
PARK SERVICE AREA MANAGER
- [Signature]* 7/31/12
URBAN FORESTRY