

IFB #732-13

Project Name and Location

**Woodstock Park
Playground
Reconstruction**

2049 N. Woodstock Street
Arlington, VA

Sheet Title

Materials Plan

Approvals _____ Date _____

Department Director _____

Park Development Division Chief _____

Design Unit Supervisor _____

Revisions _____ Date _____

Designed: AW

Drawn: AW

Checked: BG

Filename: Materials.dwg

Plotted: Jul 12, 2013

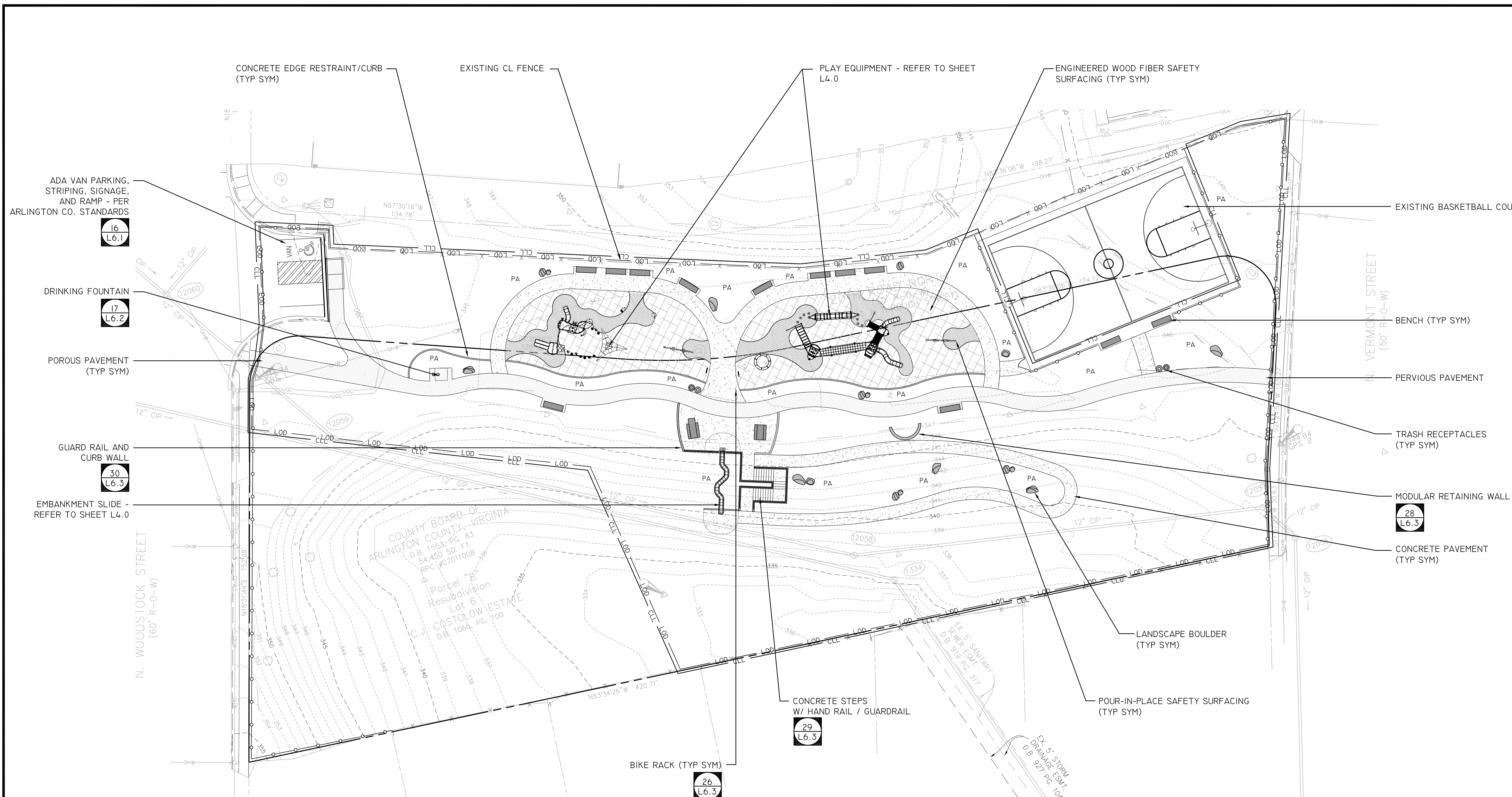
Scale: AS_SHOWN

Date: DATE

Seal _____

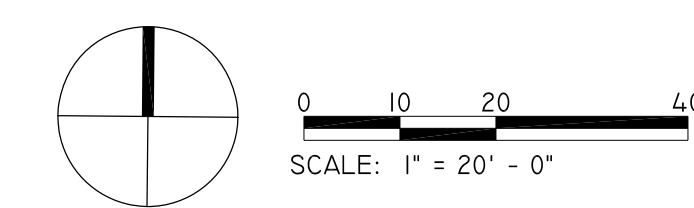
Sheet 3 of 21

L-2.0



MATERIALS LEGEND

	DETAIL # SHEET #		PICNIC TABLE (TYP SYM)		BENCH (TYP SYM)		TRASH RECEPTACLE (TYP SYM)		POUR-IN-PLACE SAFETY SURFACING		POROUS PAVEMENT		ENGINEERED WOOD FIBER SAFETY SURFACING		CONCRETE PAVEMENT
	21 L6.2		24, 25 L6.2		22, 23 L6.2		14, 15 L6.1		12 L6.1		VAR L6.1		VAR L6.0, 1		CONCRETE EDGE RESTRAINT/CURB - REFER TO SPECIFICATIONS
	7 L6.0		20 L6.2		3 L6.0		PARK SIGNS - LOCATIONS TO BE DETERMINED IN THE FIELD		TREE PROTECTION FENCING		LOD	LIMITS OF DISTURBANCE		CLL	CONTRACT LIMIT LINE
	3 L6.0		CONSTRUCTION FENCE		PROPERTY LINE										



CONSTRUCTION ABBREVIATIONS (AS APPLICABLE)

ALIGN	ALIGNMENT
CONC	CONCRETE
PA	PLANTING AREA
SYM	SYMBOL
TYP	TYPICAL
VAR	VARIOUS

NOTES:

- REFER TO SHEET L4.0 FOR PLAY EQUIPMENT INFORMATION
- REFER TO SHEETS CS4.01 AND CS4.02 FOR INFORMATION AND LOCATION OF DRAINAGE COMPONENTS AND APPURTENANCES
- ALL FINISH SURFACES, HANDRAILS, AND GUARDRAILS SHALL COMPLY WITH CURRENT ADA STANDARDS
- ADA PARKING SHALL BE PER ARLINGTON COUNTY STANDARDS. CONTRACTOR SHALL PROVIDE SHOP DRAWINGS FOR APPROVAL, PRIOR TO INSTALLATION.