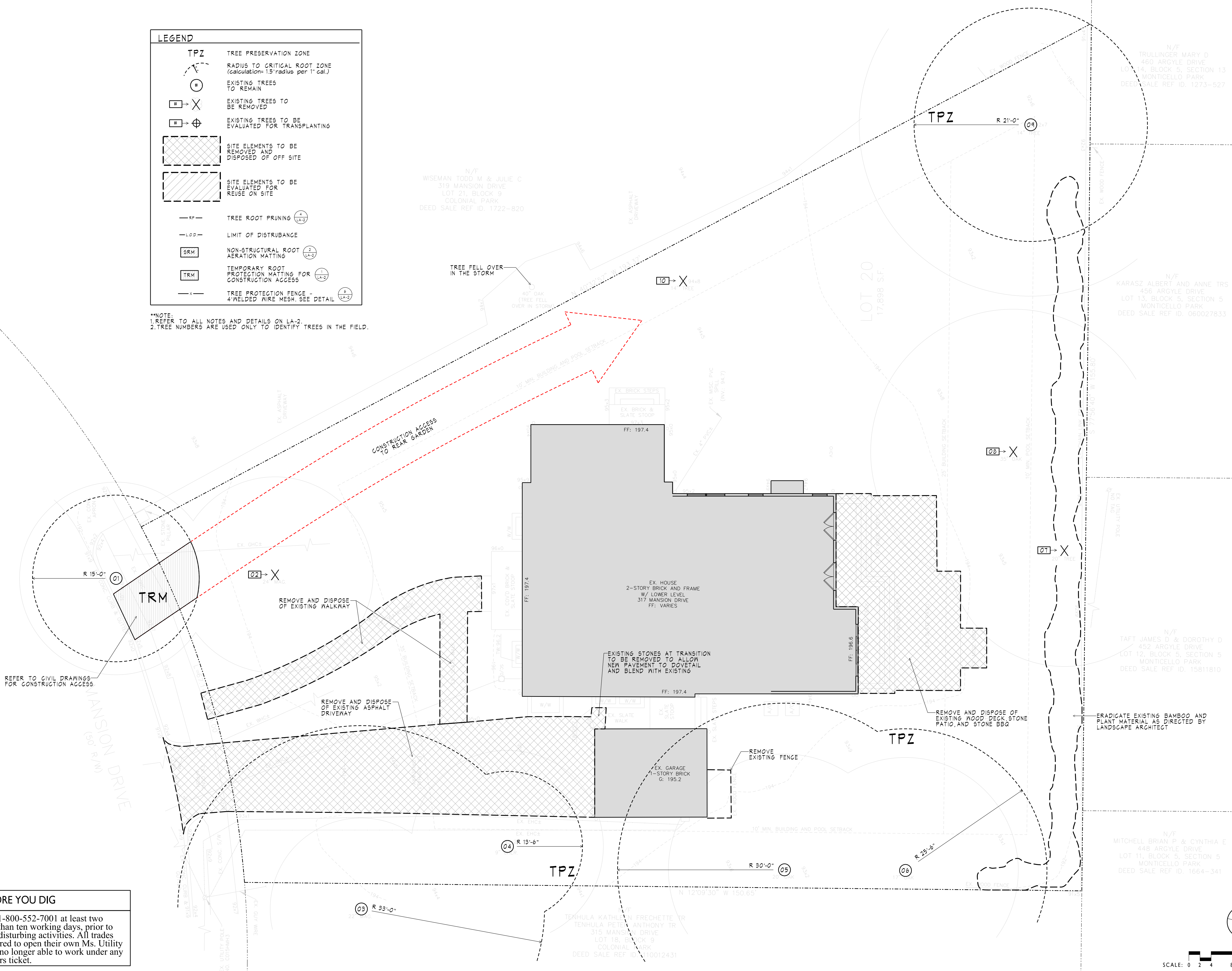


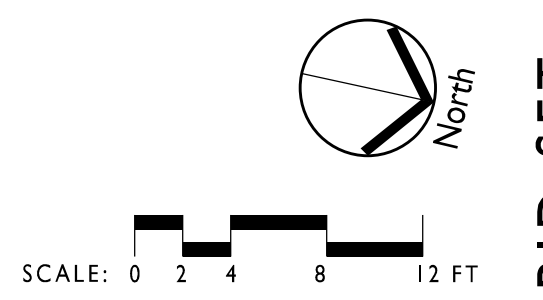
LEGEND	
	TPZ TREE PRESERVATION ZONE
	RADIUS TO CRITICAL ROOT ZONE (calculation=1.5*radius per 1" cal.)
	EXISTING TREES TO REMAIN
	EXISTING TREES TO BE REMOVED
	EXISTING TREES TO BE EVALUATED FOR TRANSPLANTING
	SITE ELEMENTS TO BE REMOVED AND DISPOSED OFF SITE
	SITE ELEMENTS TO BE EVALUATED FOR REUSE ON SITE
	TREE ROOT PRUNING (LA-3)
	LIMIT OF DISTURBANCE
	NON-STRUCTURAL ROOT AERATION MATTING (LA-2)
	TEMPORARY ROOT PROTECTION MATTING FOR CONSTRUCTION ACCESS (LA-2)
	TREE PROTECTION FENCE - 4" WELDED WIRE MESH. SEE DETAIL (LA-3)

\*\*NOTE:  
 1. REFER TO ALL NOTES AND DETAILS ON LA-2.  
 2. TREE NUMBERS ARE USED ONLY TO IDENTIFY TREES IN THE FIELD.



**CALL BEFORE YOU DIG**

Notify "MISS UTILITY" at 1-800-552-7001 at least two working days, but not more than ten working days, prior to commencement of any land disturbing activities. All trades working on the site are required to open their own Ms. Utility ticket. By law, all trades are no longer able to work under any other tradesman or contractors ticket.



**BID SET**