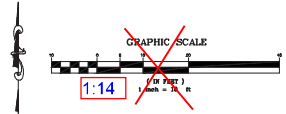
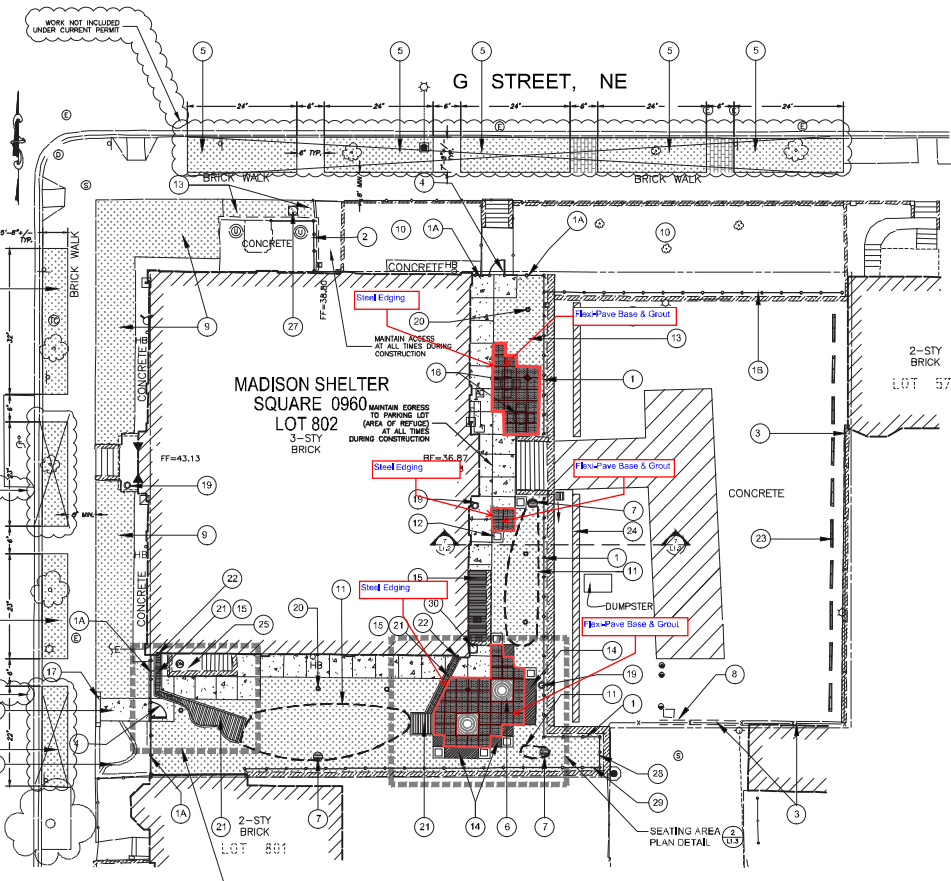


- SITE KEYNOTES**
- | SYMBOL | DESCRIPTION |
|--------|---|
| 1 | PLANT SCREEN FENCE, 7' HIGH, PROVIDE IN-GROUND POST FOUNDATIONS IN FRONT OF RETAINING WALL |
| 1A | PLANT SCREEN FENCE, 7' HIGH, PROVIDE IN-GROUND POST FOUNDATIONS |
| 1B | PLANT SCREEN FENCE ADJACENT TO EXISTING WALL, 42" HIGH, GRADE SOIL TO MATCH PARKING LOT PAVEMENT GRADES, PROVIDE IN-GROUND POST FOUNDATIONS, MATCH HEIGHTS OF 1, 1A & 1B FENCES. |
| 2 | PLANT SCREEN FENCE, 42" HIGH, ATTACH TO EXISTING TOP OF COAL VAULT, SEE AZA. |
| 3 | CUT CHAIN LINK POSTS TO 7' HEIGHT, INSTALL NEW CAP, AND PAINT BLACK, REPLACE EXISTING CHAIN LINK FABRIC WITH BLACK VINYL-COATED CHAIN LINK FABRIC. MAINTAIN CONSISTENT FENCE TOP ELEVATION THROUGHOUT. |
| 4 | NEW PEDESTRIAN GATE |
| 5 | PUBLIC SPACE PLANTING AREA, PROVIDE IMPORTED SOILS TO A DEPTH OF 18" MIN OR AS REQUIRED BY DOD. DO NOT DISTURB SOIL WITH ROOTS 1/2" DIA. OR LARGER |
| 6 | TREE GRATE, TYP. OF 2 |
| 7 | STORM INLET, SEE CAD. |
| 8 | REPAIR MOTORIZED GATE TO FULLY OPERABLE CONDITION INCLUDING 3 NEW 7" BLACK VINYL COATED HIGH HEAVY DUTY SUPPORT POSTS MATCHING EXISTING POST DIAMETER WITH POST CAPS AND NEW VINYL COATED CHAIN LINK FABRIC. WOODY GATE FRAME TO 7' HEIGHT BY CUTTING AND WELDING EXISTING FRAME. |
| 9 | LANDSCAPE EXISTING BERM, AMEND SOILS TO A DEPTH OF 12" BASED ON LAB TEST RECOMMENDATIONS |
| 10 | EXISTING LANDSCAPED AREA TO REMAIN |
| 11 | LIMITS OF LANDSCAPE DEPRESSION BOTTOM, SEE L2.0 FOR PLANT SCHEDULE |
| 12 | QUICK CRETE CALIFORNIA PLANTER 30" SQUARE X 30" DEEP, GS-CAL2000P, TYP. OF 7 |
| 13 | LANDSCAPE AREA, REPLACE EXISTING SOIL TO A DEPTH OF 18", SEE L2.0 FOR PLANT SCHEDULE |
| 14 | 18" QUICK CRETE PRECAST CONCRETE SEAT WALL, TYP. TO MATCH PLANTER |
| 15 | TRAVELABLE, ADA-COMPLIANT, MIB-1 GATE OVER EXISTING AREAWAY AND AT TRENCH DRAIN IN WALK AND SEE SPECIFICATIONS. GATE TO BE REMOVABLE. |
| 16 | MOVABLE TABLE AND SEATING (2 TABLES AND 8 CHAIRS) |
| 17 | REINSTALL HISTORIC STEP FLUSH WITH GRADE |
| 18 | ADA ENTRANCE, SLOPE LESS THAN 0% |
| 19 | TRASH RECEPTACLE, TYP. OF 3 |
| 20 | 8' LIGHTPOLE WITH CONCRETE FOOTER, SEE STRUCTURAL AND ELECTRICAL PLANS, TYP. OF 8. EXTEND CONCRETE LIGHTPOLE FOUNDATION INTO UNDISTURBED SOIL PER LIGHTPOLE FOOTER DETAIL TYP. |
| 21 | DECORATIVE TRENCH DRAIN |
| 22 | DOWNSPOUT CONNECTION TO TRENCH DRAIN |
| 23 | CONCRETE WHEEL STOP, INSTALLED 9" O.C., TYP. OF 10 |
| 24 | W-BEAM GUARDRAIL INSTALLED BEHIND EXISTING RETAINING WALL |
| 25 | REPLACE CONCRETE AREAWAY SLAB |
| 26 | INTENTIONALLY LEFT BLANK |
| 27 | INSTALL NEW CLEANOUT COVER ON EXISTING CLEANOUT PIPE PER DC WATER STANDARDS. FIELD VERIFY SIZE. |
| 28 | PLANT SCREEN FENCE (7'± ABOVE ALLEY ELEVATION), CONNECT TO AND MATCH HEIGHT OF ADJACENT CHAIN-LINK FENCE / VEHICLE GATE |
| 29 | PLANT SCREEN FENCE, STEP DOWN FROM SOUTHWEST CORNER (7'± ABOVE ALLEY ELEVATION) TOWARD SOUTHWEST CORNER, IN 6" INCREMENTS AT EACH POST (4'-4" O.C.), UNTIL REACHING A HEIGHT OF 7'± |
| 30 | REPLACE PVC CLEANOUT CAP WITH METAL DC WATER STANDARD CLEANOUT LID WITH SUNKEN NUT. RAISE CLEANOUT TO FINAL GRADE, SEE GRADING PLAN SHEET C4.0. |

- LEGEND**
- | | |
|--|---|
| | CONCRETE SIDEWALK |
| | PLANTING AREA |
| | BRICK PAVEMENT, MATCH ADJACENT BRICK PAVEMENT |
| | 2'-4" STONE PAVERS WITH 2" FLEED-PAVE JOINTS |
| | LIGHT POLE - SEE ELECTRICAL |
| | QUICK CRETE CALIFORNIA PLANTER |
| | TRASH RECEPTACLE |
| | 18" HIGH QUICK CRETE PRECAST CONCRETE SEAT WALL |
| | GATE |
| | PLANT SCREEN FENCE, SEE SHEET L1.1. MAINTAIN CONSISTENT TOP ELEVATION OF PLANT SCREEN FENCE AND GATES, ALL LOCATIONS (EXCEPT OVER COAL VAULT) |
| | VINYL COATED CHAIN LINK FENCE, MAINTAIN CONSISTENT TOP ELEVATION |
| | WHEEL STOP |
| | VEHICLE GUARDRAIL |
| | LANDSCAPE DEPRESSION |



FINAL - FOR PERMIT

- REFERENCE NOTES:**
- REFER TO DRAWING C-4.0 FOR GRADING / STORM DRAINAGE.
 - REFER TO ARCHITECTURAL DRAWINGS FOR NEW SITE RAILINGS.
 - REFER TO ELECTRICAL PLANS FOR NEW SITE LIGHTING.
 - REFER TO STRUCTURAL PLANS FOR SITE WALLS.

DATE: January 9, 2015

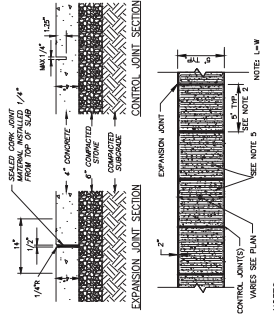
THESE PLANS WERE PREPARED FOR CONSULTATION ONLY. REVIEW, APPROVAL OR REVISION OF THESE PLANS DOES NOT CONSTITUTE AN ENDORSEMENT OR GUARANTEE OF THE ACCURACY OF THE INFORMATION PROVIDED. THE USER OF THESE PLANS SHALL BE RESPONSIBLE FOR OBTAINING ALL NECESSARY PERMITS AND APPROVALS FROM THE DISTRICT OF COLUMBIA DEPARTMENT OF GENERAL SERVICES. APPROVALS IN CLERK, RECORDS, AND SEALS ARE NOT A GUARANTEE OF THE ACCURACY OF THE INFORMATION PROVIDED BY THE USER OF THESE PLANS.



DESIGNED	AMT	REVISION	DATE	DESCRIPTION	BY	APP.
DRAWN	MAH					
CHECKED	JAD					
CERTIFICATION						
CHIEF DESIGN & ENGINEERING DIVISION DATE: 01/21/2015 ENGINEER: AMT, LLC				SITE PLAN		DRAWING NO. L1.0
PROJECT NO. 00008-002 BID. NO. 63 DATE: 01/09/2015 SHEET 10 OF 37				GOVERNMENT OF THE DISTRICT OF COLUMBIA DEPARTMENT OF GENERAL SERVICES		

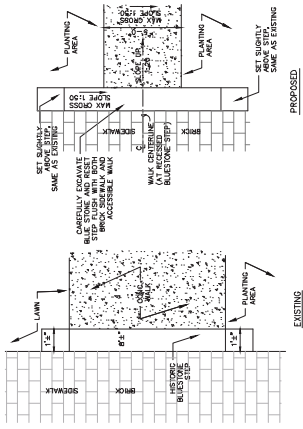
MISS UTILITY
 48 HOURS BEFORE YOU DIG
 CALL MISS UTILITY AT 202-259-7177 OR 811
 OR LOG ON TO <http://www.missutility.com>



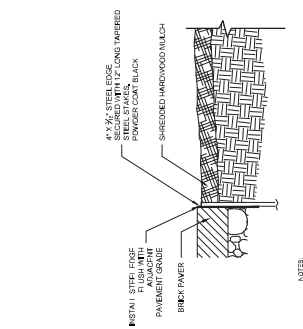


- NOTES:**
1. MATERIALS AND CONSTRUCTION METHODS SHALL MATCH ADJACENT. CONCRETE SHALL NOT CONTAIN BLACK COAR MATERIAL.
 2. CONTROL JOINTS SPACED TO MATCH ADJACENT WITH (IF MATCH) SHALL BE INSTALLED IN SAME JOINT. JOINTS SHALL BE REINFORCED WITH 2# BARS. CONTROL JOINTS SHALL BE 1/4\"/>

1. CONCRETE SIDEWALK
NOT TO SCALE

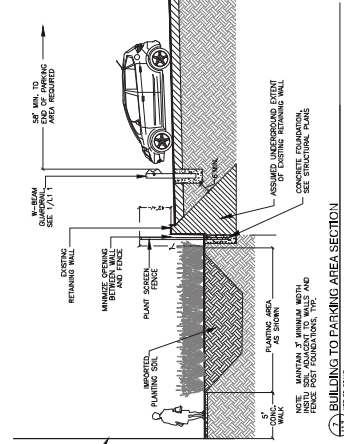


2. BLUESTONE STEP RELOCATION PLAN DETAIL
NOT TO SCALE

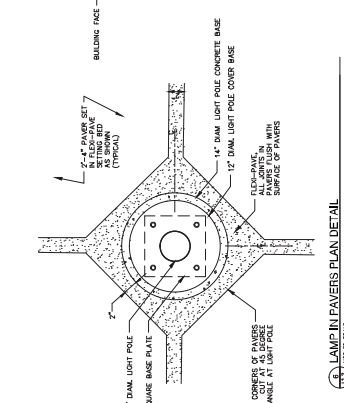


- MATERIAL:**
1. 4\"/>

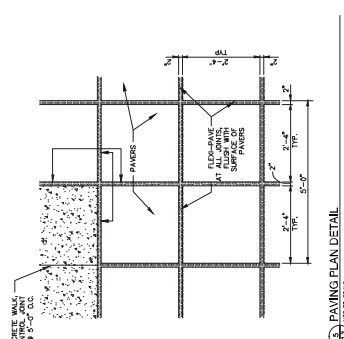
3. STEEL EDGING FOR TREE BOXES
NOT TO SCALE



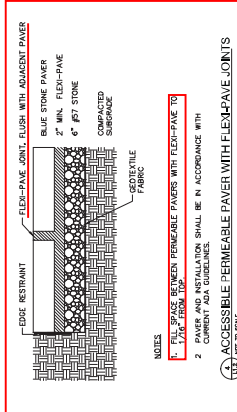
4. BUILDING TO PARKING AREA SECTION
NOT TO SCALE



5. LAMP IN FAVERS PLAN DETAIL
NOT TO SCALE



6. PAVING PLAN DETAIL
NOT TO SCALE



- NOTES:**
1. PERMEABLE PAVEMENT JOINTS SHALL BE INSTALLED WITH FLEX-PAVE TO CURRENT ADA GUIDELINES.
 2. PERMEABLE PAVEMENT JOINTS SHALL BE IN ACCORDANCE WITH CURRENT ADA GUIDELINES.

7. ACCESSIBLE PERMEABLE PAVEMENT WITH FLEX-PAVE JOINTS
NOT TO SCALE

FINAL - FOR PERMIT

DESIGNED	DATE	DESCRIPTION	BY	APP.

DESIGNED	DATE	DESCRIPTION	BY	APP.



DATE: MAY 15, 2014
 THIS PLAN IS THE PROPERTY OF THE DISTRICT OF COLUMBIA DEPARTMENT OF GENERAL SERVICES. IT IS TO BE USED ONLY FOR THE PROJECT AND SITE SPECIFICALLY IDENTIFIED ON THE PLAN. IT IS NOT TO BE REPRODUCED, COPIED, OR TRANSMITTED IN ANY FORM OR BY ANY MEANS, ELECTRONIC OR MECHANICAL, INCLUDING PHOTOCOPYING, RECORDING, OR BY ANY INFORMATION STORAGE AND RETRIEVAL SYSTEM.

REFERENCE NOTES:

1. REFER TO S-21 FOR PAVING NOTES AND DETAILS.
2. REFER TO S-22 FOR CURB, RAMP, AND DRIVEWAY DETAILS.
3. REFER TO ARCHITECTURAL DRAWINGS FOR NEW SITE BUILDINGS.
4. REFER TO ELECTRICAL PLANS FOR NEW SITE LIGHTING.
5. REFER TO STRUCTURAL PLANS FOR SITE WALLS & FOUNDATIONS.

MISS UTILITY
 48 HOURS BEFORE YOU DIG
 1-800-452-7777 OR 311
 OR VISIT US ONLINE AT www.missutility.com

